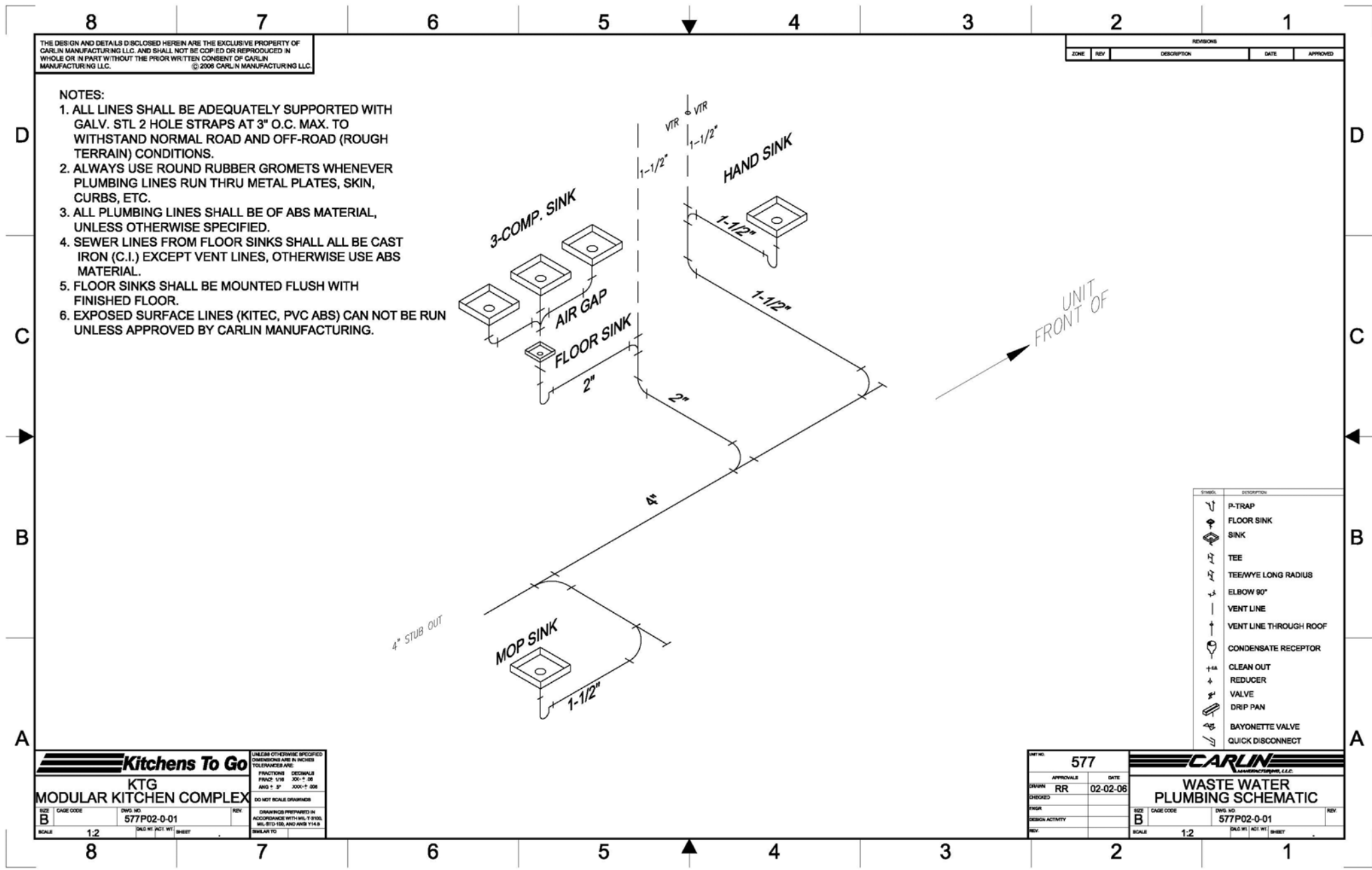


**Please Note:** This drawing shows a typical configuration of equipment and does not necessarily show the equipment currently installed in the unit. Verify the specific equipment currently in the unit with a KTG representative.



THE DESIGN AND DETAILS DISCLOSED HEREIN ARE THE EXCLUSIVE PROPERTY OF CARLIN MANUFACTURING LLC. AND SHALL NOT BE COPIED OR REPRODUCED IN WHOLE OR IN PART WITHOUT THE PRIOR WRITTEN CONSENT OF CARLIN MANUFACTURING LLC. © 2006 CARLIN MANUFACTURING LLC.

| REVISIONS |     |             |      |          |
|-----------|-----|-------------|------|----------|
| ZONE      | REV | DESCRIPTION | DATE | APPROVED |
|           |     |             |      |          |

- NOTES:**
1. ALL LINES SHALL BE ADEQUATELY SUPPORTED WITH GALV. STL 2 HOLE STRAPS AT 3" O.C. MAX. TO WITHSTAND NORMAL ROAD AND OFF-ROAD (ROUGH TERRAIN) CONDITIONS.
  2. ALWAYS USE ROUND RUBBER GROMETS WHENEVER PLUMBING LINES RUN THRU METAL PLATES, SKIN, CURBS, ETC.
  3. ALL PLUMBING LINES SHALL BE OF ABS MATERIAL, UNLESS OTHERWISE SPECIFIED.
  4. SEWER LINES FROM FLOOR SINKS SHALL ALL BE CAST IRON (C.I.) EXCEPT VENT LINES, OTHERWISE USE ABS MATERIAL.
  5. FLOOR SINKS SHALL BE MOUNTED FLUSH WITH FINISHED FLOOR.
  6. EXPOSED SURFACE LINES (KITEC, PVC ABS) CAN NOT BE RUN UNLESS APPROVED BY CARLIN MANUFACTURING.

| SYMBOL | DESCRIPTION            |
|--------|------------------------|
|        | P-TRAP                 |
|        | FLOOR SINK             |
|        | SINK                   |
|        | TEE                    |
|        | TEE/WYE LONG RADIUS    |
|        | ELBOW 90°              |
|        | VENT LINE              |
|        | VENT LINE THROUGH ROOF |
|        | CONDENSATE RECEPTOR    |
|        | CLEAN OUT              |
|        | REDUCER                |
|        | VALVE                  |
|        | DRIP PAN               |
|        | BAYONETTE VALVE        |
|        | QUICK DISCONNECT       |

**Kitchens To Go**  
**KTG**  
**MODULAR KITCHEN COMPLEX**

UNLESS OTHERWISE SPECIFIED DIMENSIONS ARE IN INCHES TOLERANCES ARE:  
 FRACTIONS DECIMALS  
 FINISH 1/16 300±.005  
 AND ± 3" 3000±.005  
 DO NOT SCALE DRAWINGS

DISBURSES PREPARED IN ACCORDANCE WITH MIL-Y-9396 MIL-STD-105-A AND ASH 114.9 SIMILAR TO

SIZE CASE CODE 577P02-0-01  
 SCALE 1:2

UNIT NO. 577

APPROVALS: RR DATE: 02-02-06

DESIGNED BY: RR

SCALE: 1:2

**CARLIN**  
 WASTE WATER PLUMBING SCHEMATIC

SIZE CASE CODE 577P02-0-01  
 SCALE 1:2