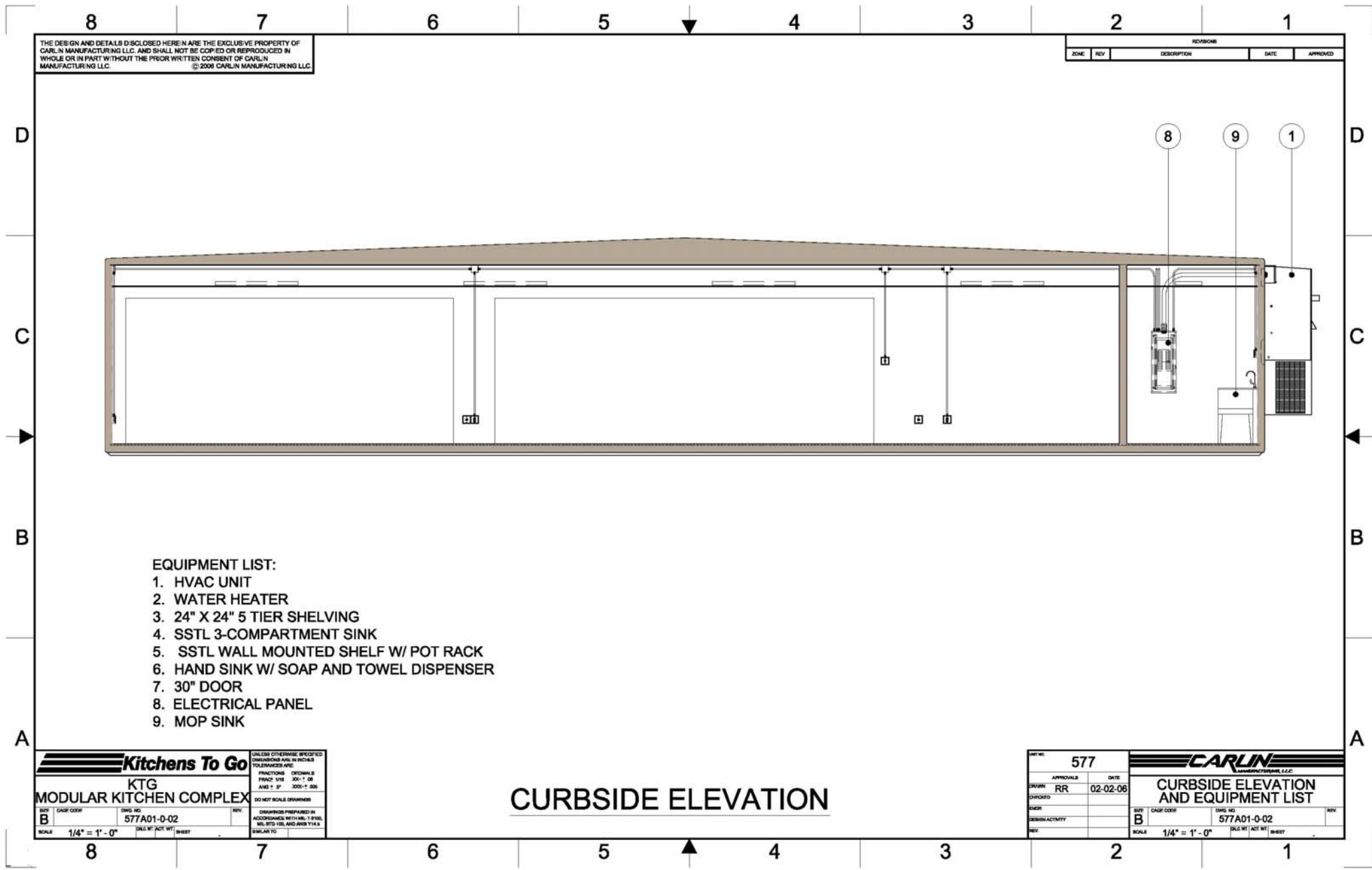


**Please Note:** This drawing shows a typical configuration of equipment and does not necessarily show the equipment currently installed in the unit. Verify the specific equipment currently in the unit with a KTG representative.



THE DESIGN AND DETAILS DISCLOSED HEREIN ARE THE EXCLUSIVE PROPERTY OF CARLIN MANUFACTURING LLC. AND SHALL NOT BE COPIED OR REPRODUCED IN WHOLE OR IN PART WITHOUT THE PRIOR WRITTEN CONSENT OF CARLIN MANUFACTURING LLC. © 2008 CARLIN MANUFACTURING LLC

REVISIONS				
ZONE	REV	DESCRIPTION	DATE	APPROVED

- EQUIPMENT LIST:**
1. HVAC UNIT
  2. WATER HEATER
  3. 24" X 24" 5 TIER SHELVING
  4. SSSL 3-COMPARTMENT SINK
  5. SSSL WALL MOUNTED SHELF W/ POT RACK
  6. HAND SINK W/ SOAP AND TOWEL DISPENSER
  7. 30" DOOR
  8. ELECTRICAL PANEL
  9. MOP SINK

<b>Kitchens To Go</b>		UNLESS OTHERWISE SPECIFIED DIMENSIONS ARE IN INCHES TOLERANCES ARE:	
KTG MODULAR KITCHEN COMPLEX		FRACTIONS: DECIMALS	
REV B		FRACTION: 3/16" 1/8" AND 1/4"	DECIMALS: .000"-.005"
SCALE: 1/4" = 1'-0"	DWG NO: 577A01-0-02	DO NOT SCALE DIMENSIONS	
DATE: 02-02-06		DRAWN BY: RR	
SHEET: 1 OF 1		CHECKED BY: [ ]	
DESIGNER: [ ]		ENGR: [ ]	
DESIGN ACTIVITY: [ ]		REV: [ ]	

## CURBSIDE ELEVATION

DWG NO: 577		<b>CARLIN</b> MANUFACTURING LLC	
APPROVALS:	DATE: 02-02-06	CURBSIDE ELEVATION AND EQUIPMENT LIST	
DRAWN BY: RR		REV: B	
CHECKED BY: [ ]		DWG NO: 577A01-0-02	
ENGR: [ ]		SCALE: 1/4" = 1'-0"	
DESIGN ACTIVITY: [ ]		DWG NO: 577A01-0-02	
REV: [ ]		DATE: 02-02-06	