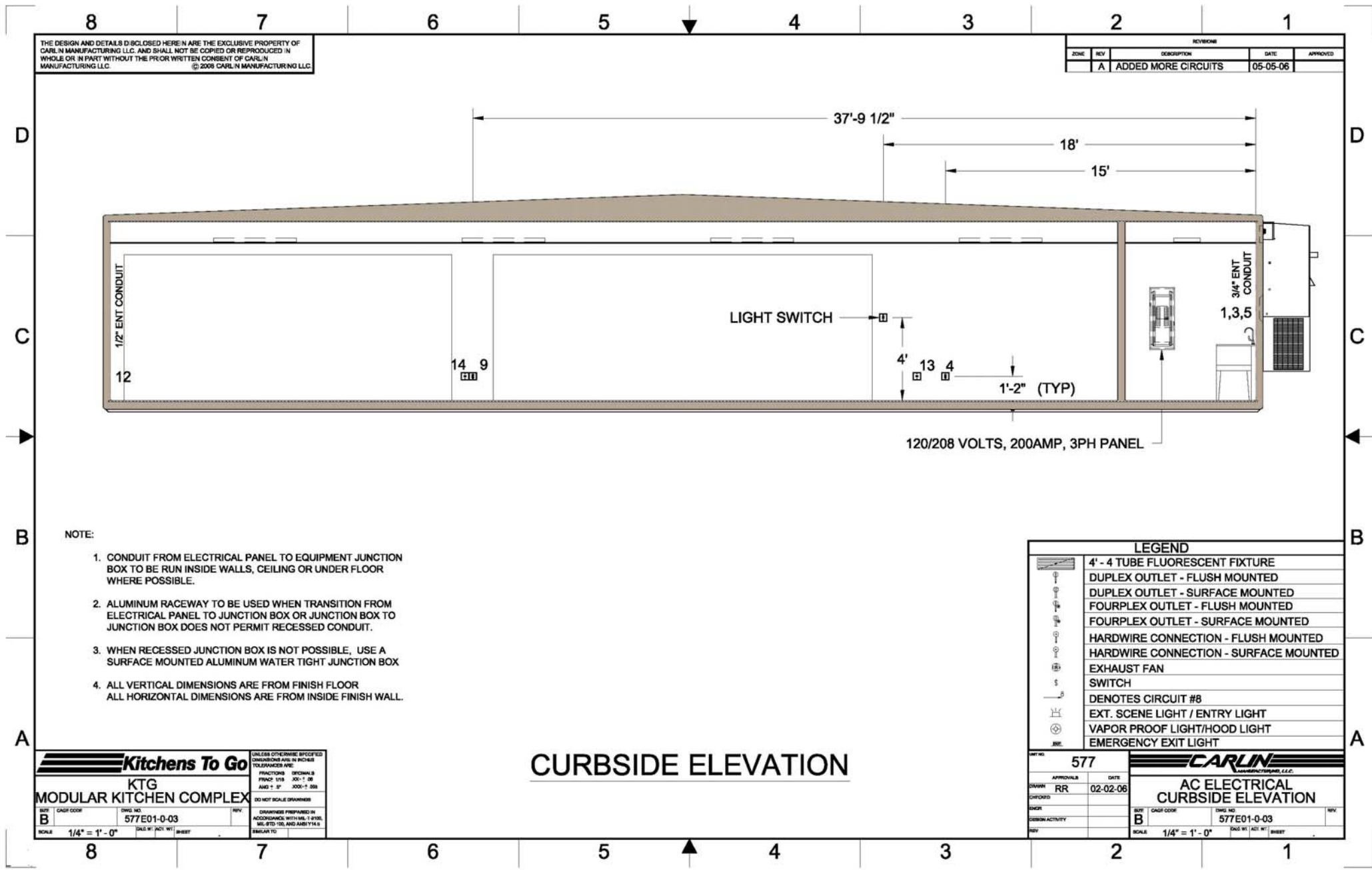


Please Note: This drawing shows a typical configuration of equipment and does not necessarily show the equipment currently installed in the unit. Verify the specific equipment currently in the unit with a KTG representative.



NOTE:

1. CONDUIT FROM ELECTRICAL PANEL TO EQUIPMENT JUNCTION BOX TO BE RUN INSIDE WALLS, CEILING OR UNDER FLOOR WHERE POSSIBLE.
2. ALUMINUM RACEWAY TO BE USED WHEN TRANSITION FROM ELECTRICAL PANEL TO JUNCTION BOX OR JUNCTION BOX TO JUNCTION BOX DOES NOT PERMIT RECESSED CONDUIT.
3. WHEN RECESSED JUNCTION BOX IS NOT POSSIBLE, USE A SURFACE MOUNTED ALUMINUM WATER TIGHT JUNCTION BOX
4. ALL VERTICAL DIMENSIONS ARE FROM FINISH FLOOR
ALL HORIZONTAL DIMENSIONS ARE FROM INSIDE FINISH WALL.

LEGEND	
	4' - 4 TUBE FLUORESCENT FIXTURE
	DUPLEX OUTLET - FLUSH MOUNTED
	DUPLEX OUTLET - SURFACE MOUNTED
	FOURPLEX OUTLET - FLUSH MOUNTED
	FOURPLEX OUTLET - SURFACE MOUNTED
	HARDWIRE CONNECTION - FLUSH MOUNTED
	HARDWIRE CONNECTION - SURFACE MOUNTED
	EXHAUST FAN
	SWITCH
	DENOTES CIRCUIT #8
	EXT. SCENE LIGHT / ENTRY LIGHT
	VAPOR PROOF LIGHT/HOOD LIGHT
	EMERGENCY EXIT LIGHT

UNIT NO. 577		CARLIN MANUFACTURING, L.L.C.	
APPROVALS	DATE	AC ELECTRICAL CURBSIDE ELEVATION	
DRAWN RR	02-02-06	577E01-0-03	
CHECKED		SCALE 1/4" = 1' - 0"	
ENGR		SHEET	
DESIGN ACTIVITY			
REV			

CURBSIDE ELEVATION

Kitchens To Go		UNLESS OTHERWISE SPECIFIED DIMENSIONS ARE IN INCHES TOLERANCES ARE:	
KTG MODULAR KITCHEN COMPLEX		FRACTIONS 1/8"	DECIMALS .001"
B		AND 1/4"	.0005"
SCALE 1/4" = 1' - 0"		DO NOT SCALE DRAWINGS	
REV	DATE	DESIGNER PREPARED BY	DATE
B		577E01-0-03	
DRAWN BY		CHECKED BY	
RR			