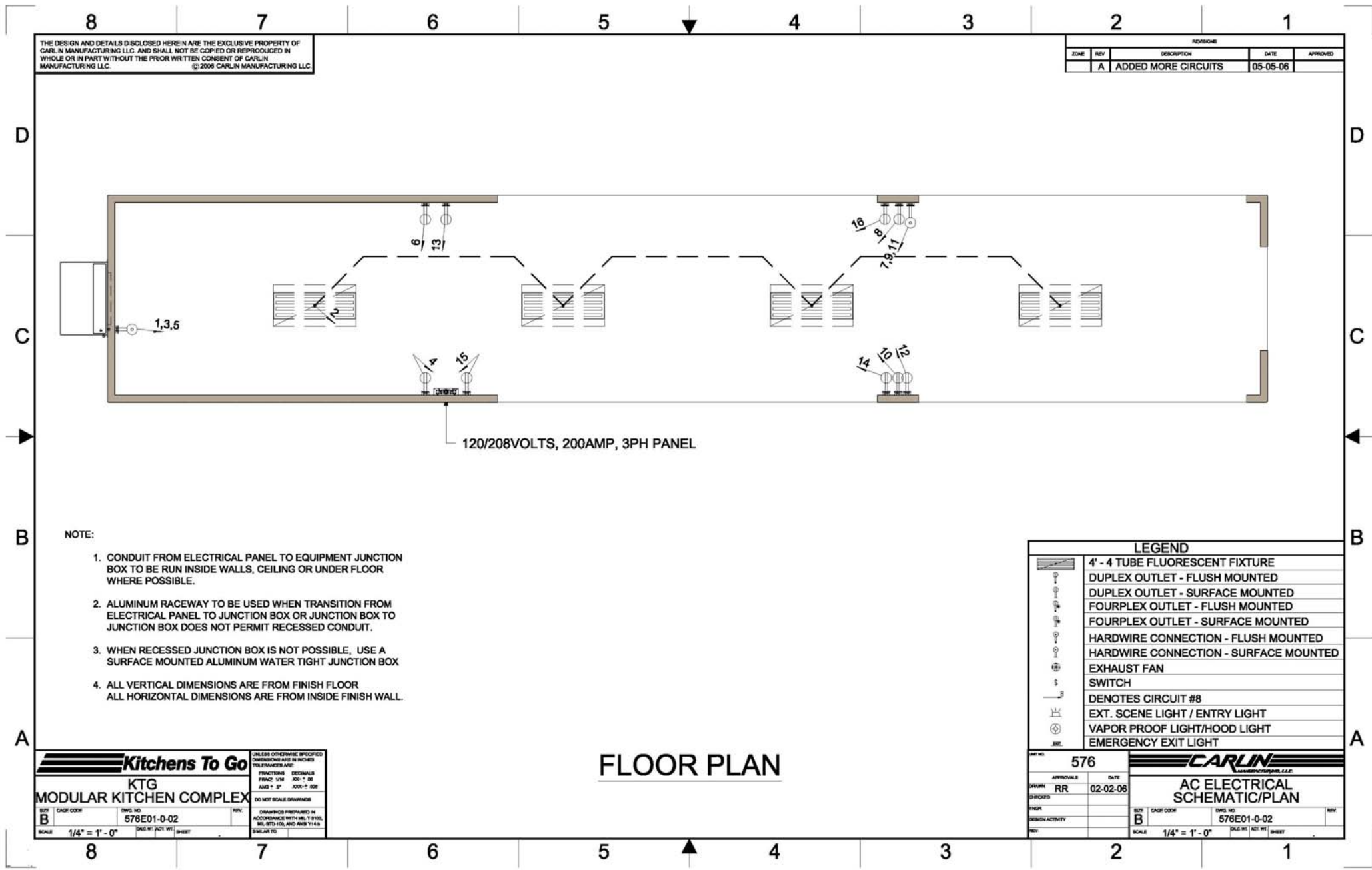


**Please Note:** This drawing shows a typical configuration of equipment and does not necessarily show the equipment currently installed in the unit. Verify the specific equipment currently in the unit with a KTG representative.



THE DESIGN AND DETAILS DISCLOSED HEREIN ARE THE EXCLUSIVE PROPERTY OF CARLIN MANUFACTURING LLC. AND SHALL NOT BE COPIED OR REPRODUCED IN WHOLE OR IN PART WITHOUT THE PRIOR WRITTEN CONSENT OF CARLIN MANUFACTURING LLC. © 2006 CARLIN MANUFACTURING LLC

ZONE		REV	DESCRIPTION	DATE	APPROVED
A			ADDED MORE CIRCUITS	05-05-06	

- NOTE:
1. CONDUIT FROM ELECTRICAL PANEL TO EQUIPMENT JUNCTION BOX TO BE RUN INSIDE WALLS, CEILING OR UNDER FLOOR WHERE POSSIBLE.
  2. ALUMINUM RACEWAY TO BE USED WHEN TRANSITION FROM ELECTRICAL PANEL TO JUNCTION BOX OR JUNCTION BOX TO JUNCTION BOX DOES NOT PERMIT RECESSED CONDUIT.
  3. WHEN RECESSED JUNCTION BOX IS NOT POSSIBLE, USE A SURFACE MOUNTED ALUMINUM WATER TIGHT JUNCTION BOX
  4. ALL VERTICAL DIMENSIONS ARE FROM FINISH FLOOR  
ALL HORIZONTAL DIMENSIONS ARE FROM INSIDE FINISH WALL.

LEGEND	
	4' - 4 TUBE FLUORESCENT FIXTURE
	DUPLEX OUTLET - FLUSH MOUNTED
	DUPLEX OUTLET - SURFACE MOUNTED
	FOURPLEX OUTLET - FLUSH MOUNTED
	FOURPLEX OUTLET - SURFACE MOUNTED
	HARDWIRE CONNECTION - FLUSH MOUNTED
	HARDWIRE CONNECTION - SURFACE MOUNTED
	EXHAUST FAN
	SWITCH
	DENOTES CIRCUIT #8
	EXT. SCENE LIGHT / ENTRY LIGHT
	VAPOR PROOF LIGHT/HOOD LIGHT
	EMERGENCY EXIT LIGHT

**Kitchens To Go**  
**KTG**  
**MODULAR KITCHEN COMPLEX**

UNLESS OTHERWISE SPECIFIED  
 DIMENSIONS ARE IN INCHES  
 TOLERANCES ARE:  
 FRACTIONS: 1/32"  
 DECIMALS: .001"  
 FEET: 1/8"  
 AND 1/4" 1/8"  
 AND 1/2" 1/4"  
 AND 3/4" 1/2"  
 DO NOT SCALE DRAWINGS

DISBURSES PREPARED IN  
 ACCORDANCE WITH MIL-STD-883C,  
 MIL-STD-101, AND ANSI Y14.5  
 SIMILAR TO

SCALE: 1/4" = 1'-0"  
 SHEET: [ ]

## FLOOR PLAN

UNIT NO: 576

APPROVALS: [ ] DATE: 02-02-06

DESIGNER: RR

CHIEF: [ ]

ENGINEER: [ ]

DESIGN ACTIVITY: [ ]

REV: [ ]

**CARLIN**  
 MANUFACTURING, L.L.C.

**AC ELECTRICAL SCHEMATIC/PLAN**

SCALE: 1/4" = 1'-0"  
 SHEET: [ ]