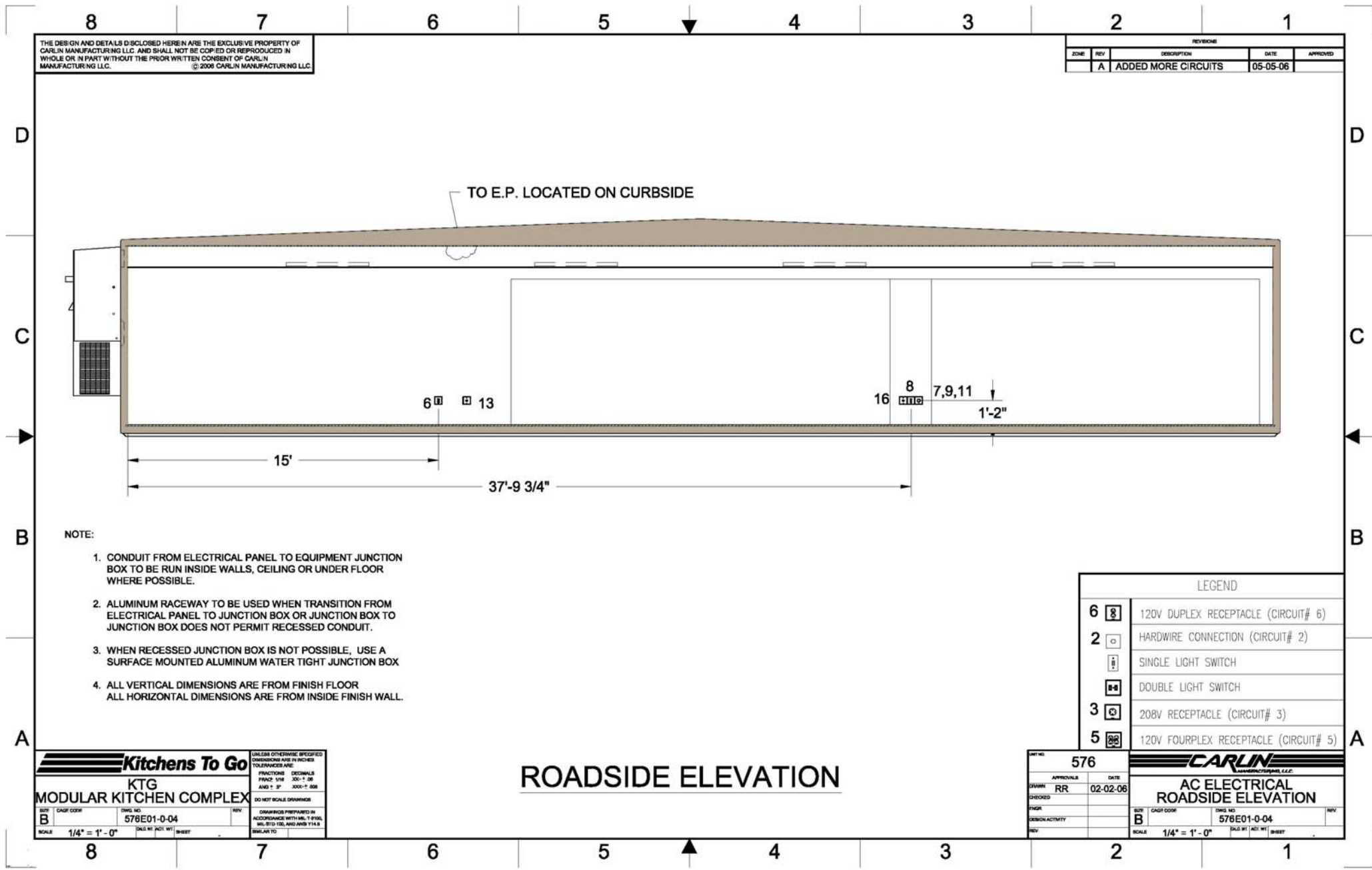


**Please Note:** This drawing shows a typical configuration of equipment and does not necessarily show the equipment currently installed in the unit. Verify the specific equipment currently in the unit with a KTG representative.



THE DESIGN AND DETAILS DISCLOSED HEREIN ARE THE EXCLUSIVE PROPERTY OF CARLIN MANUFACTURING LLC AND SHALL NOT BE COPIED OR REPRODUCED IN WHOLE OR IN PART WITHOUT THE PRIOR WRITTEN CONSENT OF CARLIN MANUFACTURING LLC. © 2008 CARLIN MANUFACTURING LLC

REVISIONS				
ZONE	REV	DESCRIPTION	DATE	APPROVED
	A	ADDED MORE CIRCUITS	05-05-06	

TO E.P. LOCATED ON CURBSIDE

- NOTE:
1. CONDUIT FROM ELECTRICAL PANEL TO EQUIPMENT JUNCTION BOX TO BE RUN INSIDE WALLS, CEILING OR UNDER FLOOR WHERE POSSIBLE.
  2. ALUMINUM RACEWAY TO BE USED WHEN TRANSITION FROM ELECTRICAL PANEL TO JUNCTION BOX OR JUNCTION BOX TO JUNCTION BOX DOES NOT PERMIT RECESSED CONDUIT.
  3. WHEN RECESSED JUNCTION BOX IS NOT POSSIBLE, USE A SURFACE MOUNTED ALUMINUM WATER TIGHT JUNCTION BOX
  4. ALL VERTICAL DIMENSIONS ARE FROM FINISH FLOOR  
ALL HORIZONTAL DIMENSIONS ARE FROM INSIDE FINISH WALL.

LEGEND	
6	120V DUPLEX RECEPTACLE (CIRCUIT# 6)
2	HARDWIRE CONNECTION (CIRCUIT# 2)
	SINGLE LIGHT SWITCH
	DOUBLE LIGHT SWITCH
3	208V RECEPTACLE (CIRCUIT# 3)
5	120V FOURPLEX RECEPTACLE (CIRCUIT# 5)

**Kitchens To Go**  
 KTG  
 MODULAR KITCHEN COMPLEX

UNLESS OTHERWISE SPECIFIED DIMENSIONS ARE IN INCHES TOLERANCES ARE:  
 FRACTIONS DECIMALS  
 FINISH SIZE .001-1.00  
 AND 1" 3" .000-7.000  
 DO NOT SCALE DRAWINGS

DISBURSERS PREPARED IN ACCORDANCE WITH M.E.T. 9136, M.E.T. 9137 FOR ANJANS 1143  
 SIMILAR TO

SCALE 1/4" = 1'-0"

**ROADSIDE ELEVATION**

576

APPROVALS DATE  
 RR 02-02-06

CHANGED  
 ENGR  
 DESIGN ACTIVITY  
 REV

**CARLIN**  
 MANUFACTURING LLC

AC ELECTRICAL  
 ROADSIDE ELEVATION

SCALE 1/4" = 1'-0"