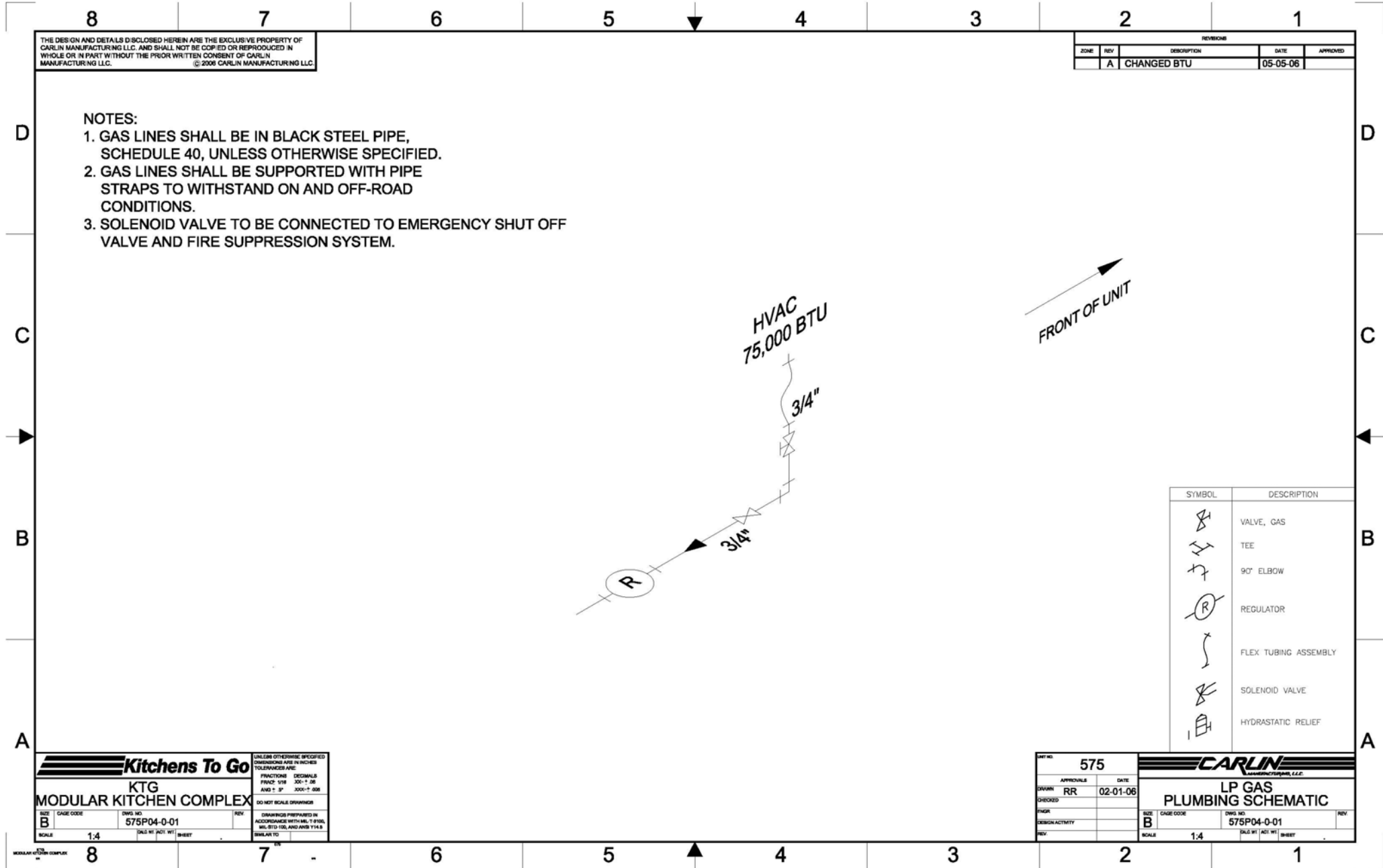


Please Note: This drawing shows a typical configuration of equipment and does not necessarily show the equipment currently installed in the unit. Verify the specific equipment currently in the unit with a KTG representative.



THE DESIGN AND DETAILS DISCLOSED HEREIN ARE THE EXCLUSIVE PROPERTY OF CARLIN MANUFACTURING LLC. AND SHALL NOT BE COPIED OR REPRODUCED IN WHOLE OR IN PART WITHOUT THE PRIOR WRITTEN CONSENT OF CARLIN MANUFACTURING LLC. © 2006 CARLIN MANUFACTURING LLC.

| REVISIONS | | | | |
|-----------|-----|-------------|----------|----------|
| ZONE | REV | DESCRIPTION | DATE | APPROVED |
| | A | CHANGED BTU | 05-05-06 | |

NOTES:

1. GAS LINES SHALL BE IN BLACK STEEL PIPE, SCHEDULE 40, UNLESS OTHERWISE SPECIFIED.
2. GAS LINES SHALL BE SUPPORTED WITH PIPE STRAPS TO WITHSTAND ON AND OFF-ROAD CONDITIONS.
3. SOLENOID VALVE TO BE CONNECTED TO EMERGENCY SHUT OFF VALVE AND FIRE SUPPRESSION SYSTEM.

| SYMBOL | DESCRIPTION |
|--------|----------------------|
| | VALVE, GAS |
| | TEE |
| | 90° ELBOW |
| | REGULATOR |
| | FLEX TUBING ASSEMBLY |
| | SOLENOID VALVE |
| | HYDRASTATIC RELIEF |

| | | | |
|-----------------------------|------------------------|---|---|
| Kitchens To Go | | UNLESS OTHERWISE SPECIFIED DIMENSIONS ARE IN INCHES TOLERANCES ARE: | |
| KTG MODULAR KITCHEN COMPLEX | | FRACTIONS: 1/8" 3/16" 1/4" 3/8" 1/2" 5/8" 3/4" 7/8" | DECIMALS: .001"-.005" .006"-.010" .011"-.015" .016"-.020" .021"-.025" .026"-.030" .031"-.035" .036"-.040" .041"-.045" .046"-.050" |
| SIZE: B | CAGE CODE: 575P04-0-01 | DO NOT SCALE DRAWINGS | |
| SCALE: 1:4 | DWG NO: 575P04-0-01 | DRAWINGS PREPARED IN ACCORDANCE WITH MIL-STD-883C FOR ANJANIS 1143 | |

| | | |
|-----------------|----------------|---------------------------|
| DWG NO: 575 | CARLIN | |
| APPROVALS: RR | DATE: 02-01-06 | LP GAS PLUMBING SCHEMATIC |
| DESIGNED: RR | SCALE: 1:4 | DWG NO: 575P04-0-01 |
| DESIGN ACTIVITY | SCALE: 1:4 | DWG NO: 575P04-0-01 |