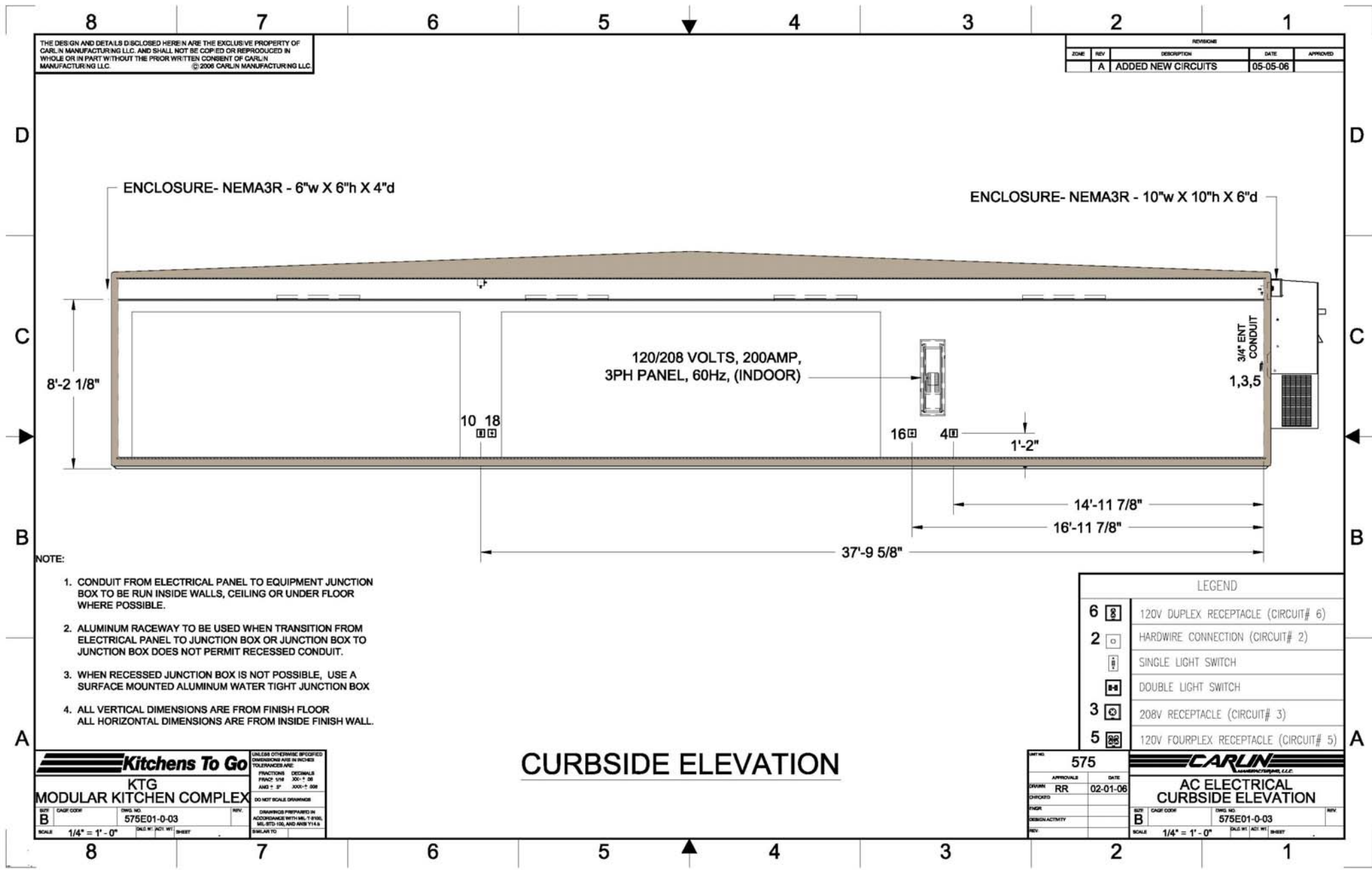


Please Note: This drawing shows a typical configuration of equipment and does not necessarily show the equipment currently installed in the unit. Verify the specific equipment currently in the unit with a KTG representative.



THE DESIGN AND DETAILS DISCLOSED HEREIN ARE THE EXCLUSIVE PROPERTY OF CARLIN MANUFACTURING LLC. AND SHALL NOT BE COPIED OR REPRODUCED IN WHOLE OR IN PART WITHOUT THE PRIOR WRITTEN CONSENT OF CARLIN MANUFACTURING LLC. © 2008 CARLIN MANUFACTURING LLC

REVISION				
ZONE	REV	DESCRIPTION	DATE	APPROVED
	A	ADDED NEW CIRCUITS	05-05-06	

Kitchens To Go
KTG
MODULAR KITCHEN COMPLEX

UNLESS OTHERWISE SPECIFIED DIMENSIONS ARE IN INCHES TOLERANCES ARE:
 FRACTIONS: 1/8" 3/16" 1/4" 3/8" 1/2" 5/8" 3/4" 7/8"
 DECIMALS: .000"-.001" .001"-.005" .005"-.010" .010"-.015" .015"-.020" .020"-.030" .030"-.040" .040"-.050" .050"-.075" .075"-.100"
 DO NOT SCALE DRAWINGS

DISBURSES PREPARED IN ACCORDANCE WITH M.E.T. 1-916, M.E.T. 1-917, AND M.E.T. 1-918

SCALE: 1/4" = 1'-0"

CURBSIDE ELEVATION

575

CARLIN
 MANUFACTURING, L.L.C.

AC ELECTRICAL CURBSIDE ELEVATION

APPROVALS: RR DATE: 02-01-06

SCALE: 1/4" = 1'-0"