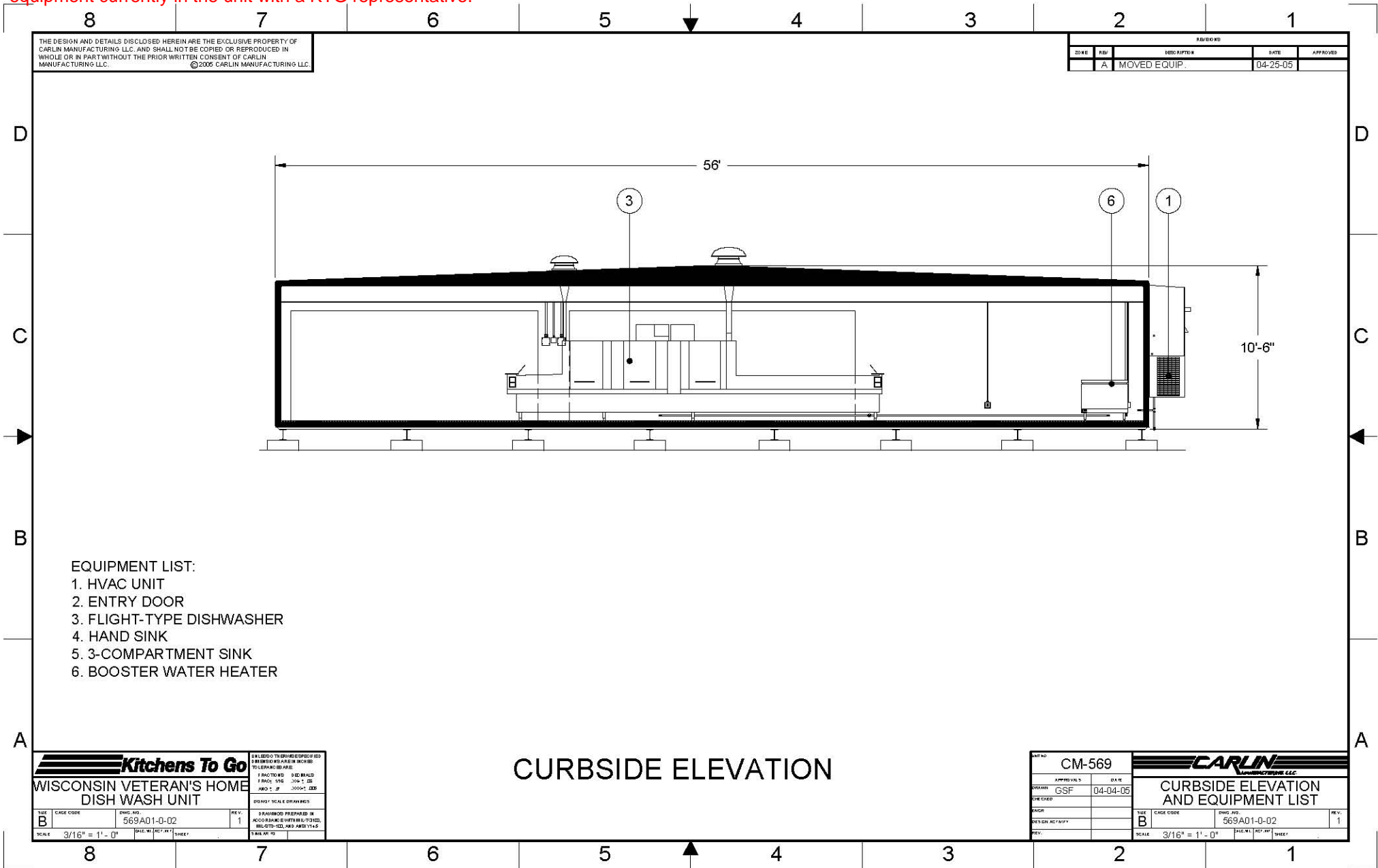


Please note: This drawing shows a typical configuration of equipment and does not necessarily show the equipment currently installed in the unit. Verify the specific equipment currently in the unit with a KTG representative.



THE DESIGN AND DETAILS DISCLOSED HEREIN ARE THE EXCLUSIVE PROPERTY OF CARLIN MANUFACTURING LLC. AND SHALL NOT BE COPIED OR REPRODUCED IN WHOLE OR IN PART WITHOUT THE PRIOR WRITTEN CONSENT OF CARLIN MANUFACTURING LLC. ©2005 CARLIN MANUFACTURING LLC.

ZONE	REV	DESCRIPTION	DATE	APPROVED
A		MOVED EQUIP.	04-25-05	

- EQUIPMENT LIST:
- 1. HVAC UNIT
  - 2. ENTRY DOOR
  - 3. FLIGHT-TYPE DISHWASHER
  - 4. HAND SINK
  - 5. 3-COMPARTMENT SINK
  - 6. BOOSTER WATER HEATER

<b>Kitchens To Go</b>		DRAWING TO BE USED ONLY FOR THE PROJECT AND NOT TO BE REPRODUCED OR COPIED FOR ANY OTHER PROJECT.	
WISCONSIN VETERAN'S HOME DISH WASH UNIT		PROJECT NO. 569A01-0-02	
REV.	1	DATE	04-04-05
SCALE	3/16" = 1'-0"	SHEET	1

## CURBSIDE ELEVATION

UNIT NO.	CM-569	<b>CARLIN</b> MANUFACTURING LLC	
DRAWN	GSF	DATE	04-04-05
CHECKED			
DESIGN APPROVAL			
REV.			
SCALE	3/16" = 1'-0"	SHEET	1