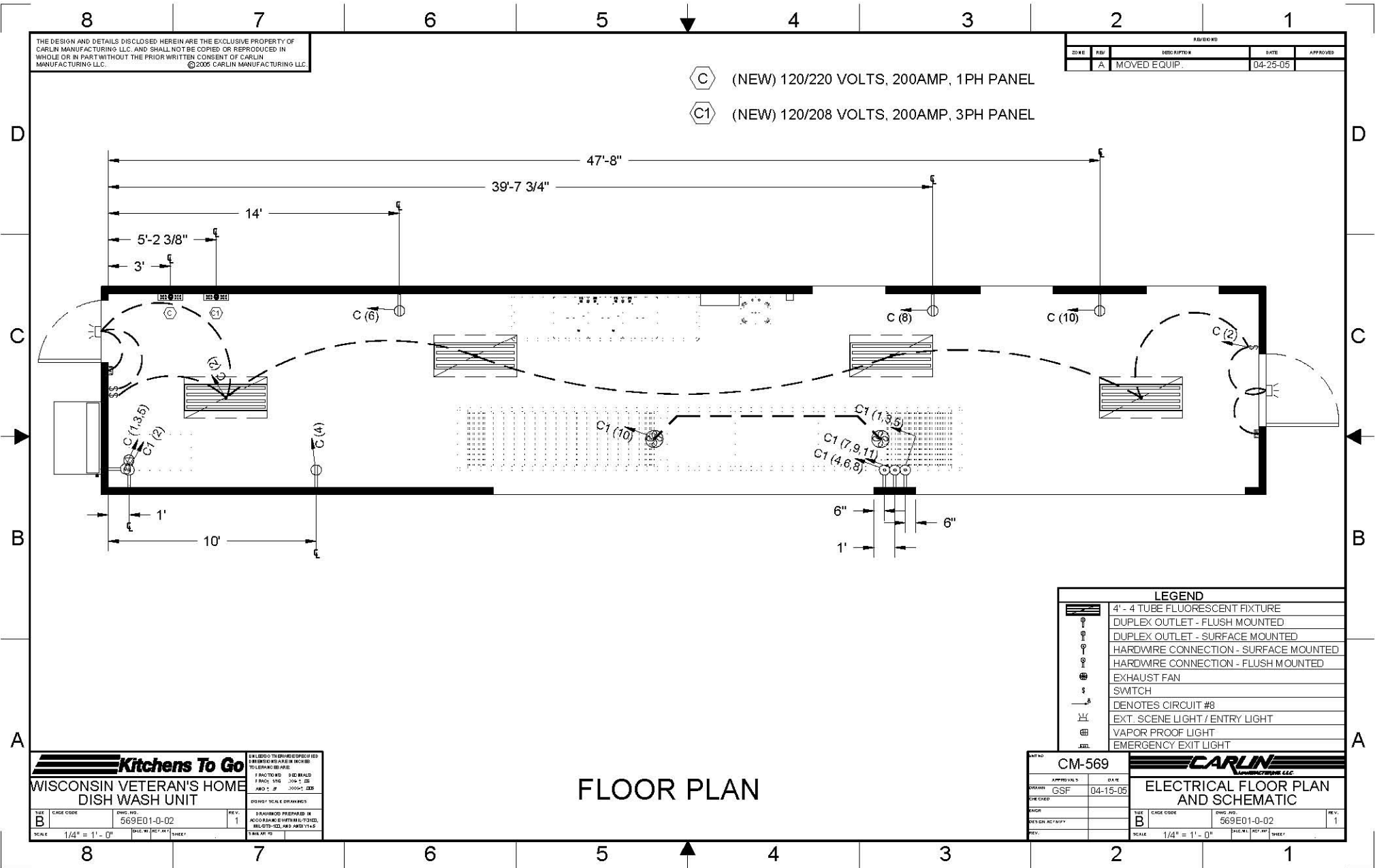


Please note: This drawing shows a typical configuration of equipment and does not necessarily show the equipment currently installed in the unit. Verify the specific equipment currently in the unit with a KTG representative.



THE DESIGN AND DETAILS DISCLOSED HEREIN ARE THE EXCLUSIVE PROPERTY OF CARLIN MANUFACTURING LLC. AND SHALL NOT BE COPIED OR REPRODUCED IN WHOLE OR IN PART WITHOUT THE PRIOR WRITTEN CONSENT OF CARLIN MANUFACTURING LLC. ©2005 CARLIN MANUFACTURING LLC.

REVISIONS				
DATE	REV	DESCRIPTION	DATE	APPROVED
	A	MOVED EQUIP.	04-25-05	

- ⬡ (NEW) 120/220 VOLTS, 200AMP, 1PH PANEL
- ⬢ (NEW) 120/208 VOLTS, 200AMP, 3PH PANEL

LEGEND	
	4' - 4 TUBE FLUORESCENT FIXTURE
	DUPLEX OUTLET - FLUSH MOUNTED
	DUPLEX OUTLET - SURFACE MOUNTED
	HARDWARE CONNECTION - SURFACE MOUNTED
	HARDWARE CONNECTION - FLUSH MOUNTED
	EXHAUST FAN
	SWITCH
	DENOTES CIRCUIT #8
	EXT. SCENE LIGHT / ENTRY LIGHT
	VAPOR PROOF LIGHT
	EMERGENCY EXIT LIGHT

Kitchens To Go		DRAWING TO BE PREPARED BY THE ARCHITECT OR ENGINEER	
WISCONSIN VETERAN'S HOME DISH WASH UNIT		TO BE PREPARED BY THE ARCHITECT OR ENGINEER	
DATE	CAGE CODE	ENG. NO.	REV.
B		569E01-0-02	1
SCALE	1/4" = 1' - 0"	DATE	04-15-05
SHEET		SHEET	

FLOOR PLAN

UNIT NO.	CM-569	CARLIN MANUFACTURING LLC	
DRAWN	GSF	DATE	04-15-05
CHECKED		ELECTRICAL FLOOR PLAN AND SCHEMATIC	
DATE ON ACTIVITY		DATE	04-15-05
REV.		SCALE	1/4" = 1' - 0"
		SHEET	1