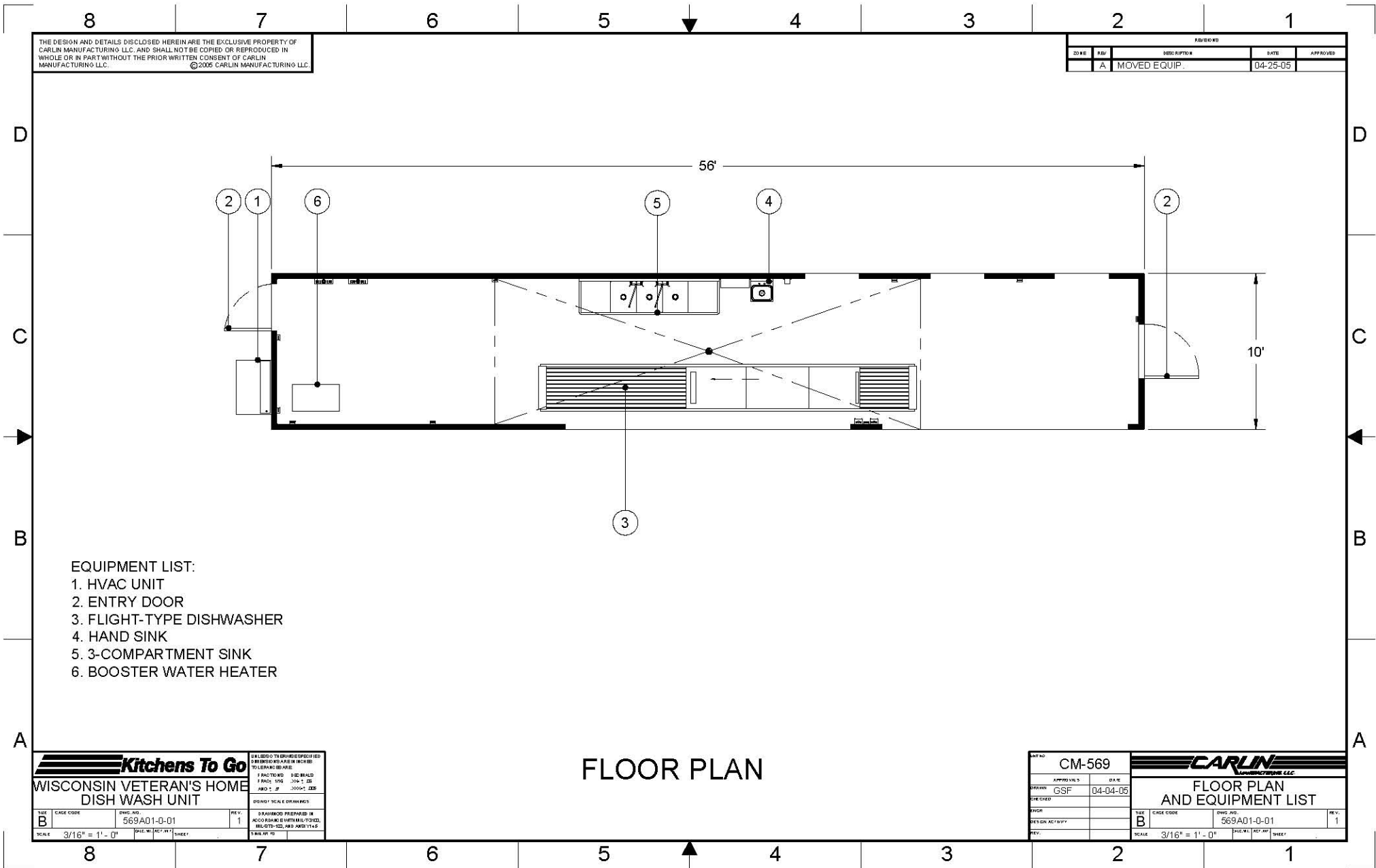


Please note: This drawing shows a typical configuration of equipment and does not necessarily show the equipment currently installed in the unit. Verify the specific equipment currently in the unit with a KTG representative.



THE DESIGN AND DETAILS DISCLOSED HEREIN ARE THE EXCLUSIVE PROPERTY OF CARLIN MANUFACTURING LLC. AND SHALL NOT BE COPIED OR REPRODUCED IN WHOLE OR IN PART WITHOUT THE PRIOR WRITTEN CONSENT OF CARLIN MANUFACTURING LLC. ©2005 CARLIN MANUFACTURING LLC.

REVISIONS				
ZONE	REV	DESCRIPTION	DATE	APPROVED
A		MOVED EQUIP.	04-25-05	

- EQUIPMENT LIST:
1. HVAC UNIT
 2. ENTRY DOOR
 3. FLIGHT-TYPE DISHWASHER
 4. HAND SINK
 5. 3-COMPARTMENT SINK
 6. BOOSTER WATER HEATER

FLOOR PLAN

Kitchens To Go
WISCONSIN VETERAN'S HOME DISH WASH UNIT

SIZE B	CAGE CODE 569A01-0-01	DWG. NO. 569A01-0-01	REV. 1
SCALE 3/16" = 1'-0"		SHEET	

DESIGNED TO DIMENSIONS SPECIFIED BY ARCHITECT OR AS SHOWN IN THIS DRAWING. ALL DIMENSIONS ARE IN INCHES UNLESS OTHERWISE SPECIFIED. 1" = 1'-0".

UNIT NO. CM-569	APPROVALS DESIGN: GSF CHECKED: ENGR: DESIGN ACTIVITY: REV:	DATE 04-04-05		
FLOOR PLAN AND EQUIPMENT LIST			SIZE B	REV. 1
SCALE 3/16" = 1'-0"			DWG. NO. 569A01-0-01	SHEET