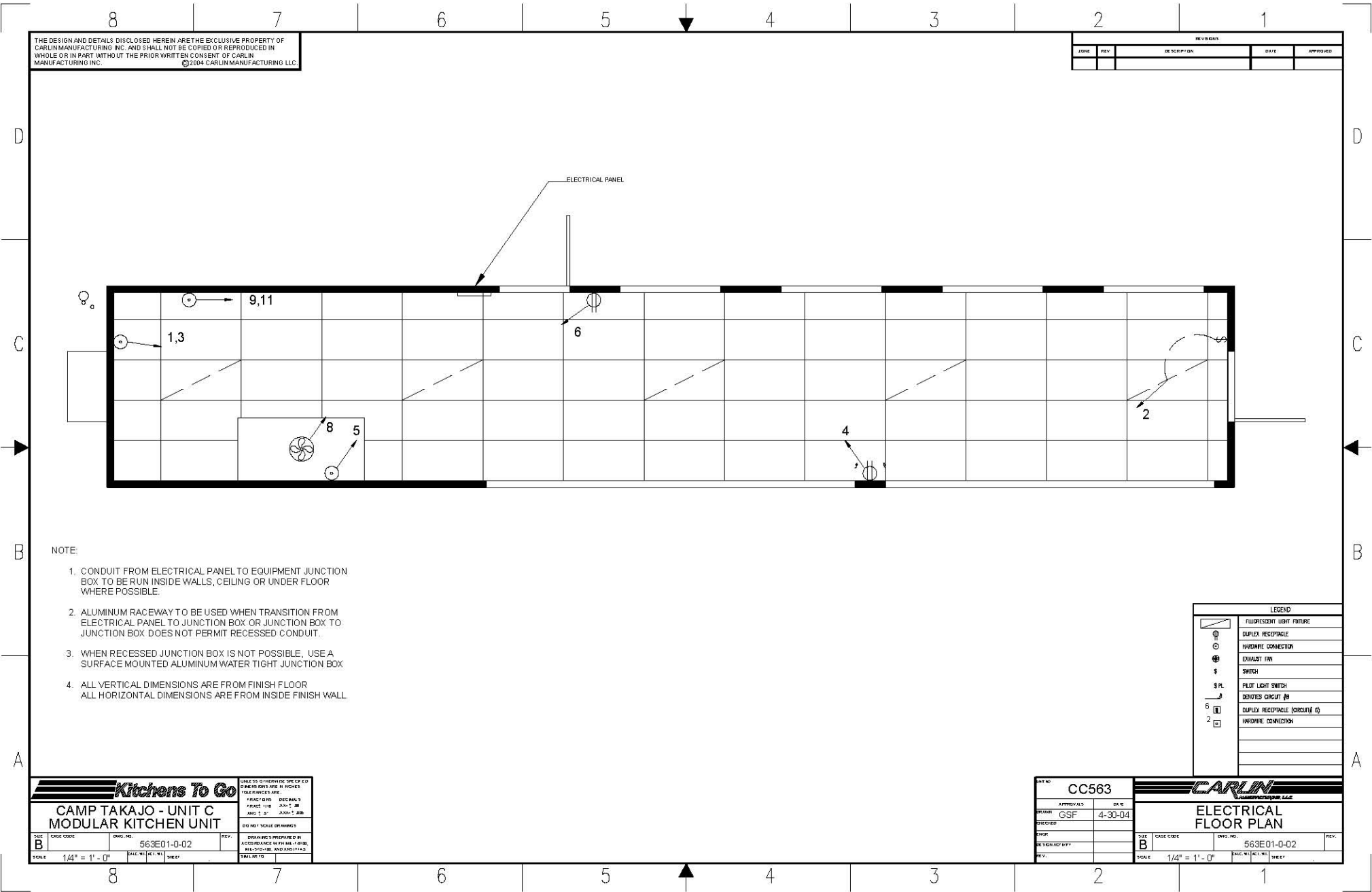


Please note: This drawing shows a typical configuration of equipment and does not necessarily show the equipment currently installed in the unit. Verify the specific equipment currently in the unit with a KTG representative.



THE DESIGN AND DETAILS DISCLOSED HEREIN ARE THE EXCLUSIVE PROPERTY OF CARLIN MANUFACTURING INC. AND SHALL NOT BE COPIED OR REPRODUCED IN WHOLE OR IN PART WITHOUT THE PRIOR WRITTEN CONSENT OF CARLIN MANUFACTURING INC. ©2004 CARLIN MANUFACTURING LLC.

REVISIONS				
ZONE	REV	DESCRIPTION	DATE	APPROVED

- NOTE:
1. CONDUIT FROM ELECTRICAL PANEL TO EQUIPMENT JUNCTION BOX TO BE RUN INSIDE WALLS, CEILING OR UNDER FLOOR WHERE POSSIBLE.
 2. ALUMINUM RACEWAY TO BE USED WHEN TRANSITION FROM ELECTRICAL PANEL TO JUNCTION BOX OR JUNCTION BOX TO JUNCTION BOX DOES NOT PERMIT RECESSED CONDUIT.
 3. WHEN RECESSED JUNCTION BOX IS NOT POSSIBLE, USE A SURFACE MOUNTED ALUMINUM WATER TIGHT JUNCTION BOX
 4. ALL VERTICAL DIMENSIONS ARE FROM FINISH FLOOR
ALL HORIZONTAL DIMENSIONS ARE FROM INSIDE FINISH WALL.

LEGEND	
	FLUORESCENT LIGHT FIXTURE
	DUPLEX RECEPTACLE
	HARDWIRE CONNECTION
	EXHAUST FAN
	SWITCH
	PILOT LIGHT SWITCH
	DENOTES CIRCUIT #
	DUPLEX RECEPTACLE (CIRCUIT #)
	HARDWIRE CONNECTION

Kitchens To Go		UNLESS OTHERWISE SPECIFIED DIMENSIONS ARE IN INCHES TOLERANCES ARE: FINISH DIM. DECIMALS FRACTIONS .125" .001" .005" .010" ANG. 1/4" .001" .005" .010"	
CAMP TAKAJO - UNIT C MODULAR KITCHEN UNIT		DO NOT SCALE DIMENSIONS	
SIZE B	CAGE CODE 563E01-0-02	REV. 	DRAWING PREPARED IN ACCORDANCE WITH MFG. SPEC. AND APPROVALS
SCALE 1/4" = 1' - 0"	DATE 	BY 	SCALE TO

PART NO CC563		CARLIN MANUFACTURING LLC	
APPROVALS DRAWN G.S.F.	DATE 4-30-04	ELECTRICAL FLOOR PLAN	
CHECKED 		SIZE B	CAGE CODE 563E01-0-02
DESIGN REVIEW 		SCALE 1/4" = 1' - 0"	DATE
REV. 		BY 	