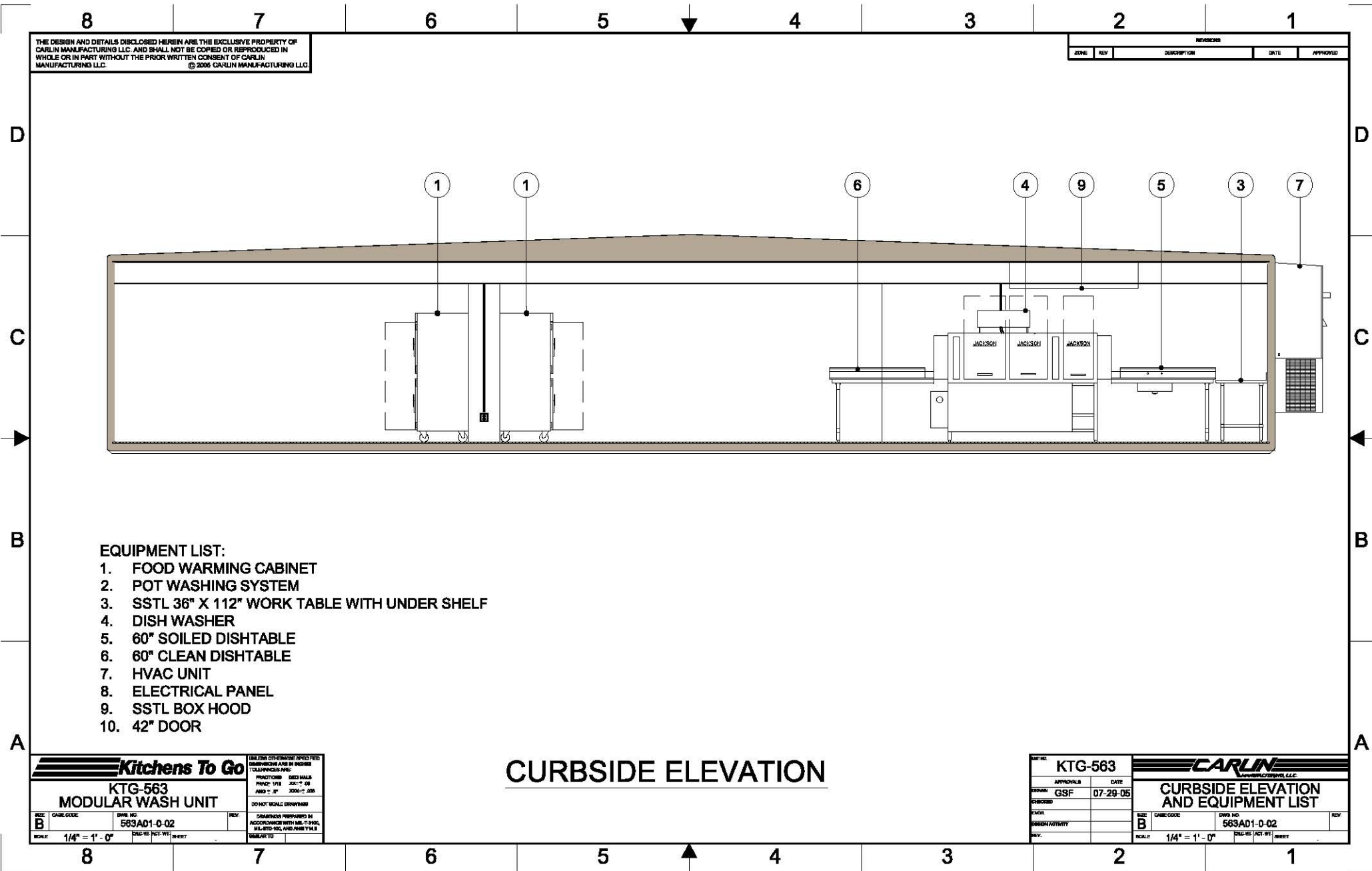


Please note: This drawing shows a typical configuration of equipment and does not necessarily show the equipment currently installed in the unit. Verify the specific equipment currently in the unit with a KTG representative.



THE DESIGN AND DETAILS DISCLOSED HEREIN ARE THE EXCLUSIVE PROPERTY OF CARLIN MANUFACTURING LLC. AND SHALL NOT BE COPIED OR REPRODUCED IN WHOLE OR IN PART WITHOUT THE PRIOR WRITTEN CONSENT OF CARLIN MANUFACTURING LLC. © 2006 CARLIN MANUFACTURING LLC

REVISIONS				
ZONE	REV	DESCRIPTION	DATE	APPROVED

EQUIPMENT LIST:

1. FOOD WARMING CABINET
2. POT WASHING SYSTEM
3. SSSL 36" X 112" WORK TABLE WITH UNDER SHELF
4. DISH WASHER
5. 60" SOILED DISHTABLE
6. 60" CLEAN DISHTABLE
7. HVAC UNIT
8. ELECTRICAL PANEL
9. SSSL BOX HOOD
10. 42" DOOR

CURBSIDE ELEVATION

Kitchens To Go
KTG-563
MODULAR WASH UNIT

UNLESS OTHERWISE SPECIFIED DIMENSIONS ARE IN INCHES TOLERANCES ARE:
 FINISHES: SEE SCHEDULE
 FINISH: 1/8" 304-1/8"
 AND: 1/4" 304-1/4"

DO NOT SCALE DRAWINGS

CHANGES PREPARED IN ACCORDANCE WITH AIAA, C-390, 1/16/02-101, AND AIAA Y 1.1

DATE CODE: 583AD1-0-02

SCALE: 1/4" = 1' - 0"

KTG-563

CARLIN
 MANUFACTURING LLC

CURBSIDE ELEVATION AND EQUIPMENT LIST

APPROVALS: GSF DATE: 07-29-05

DATE CODE: 583AD1-0-02

SCALE: 1/4" = 1' - 0"