

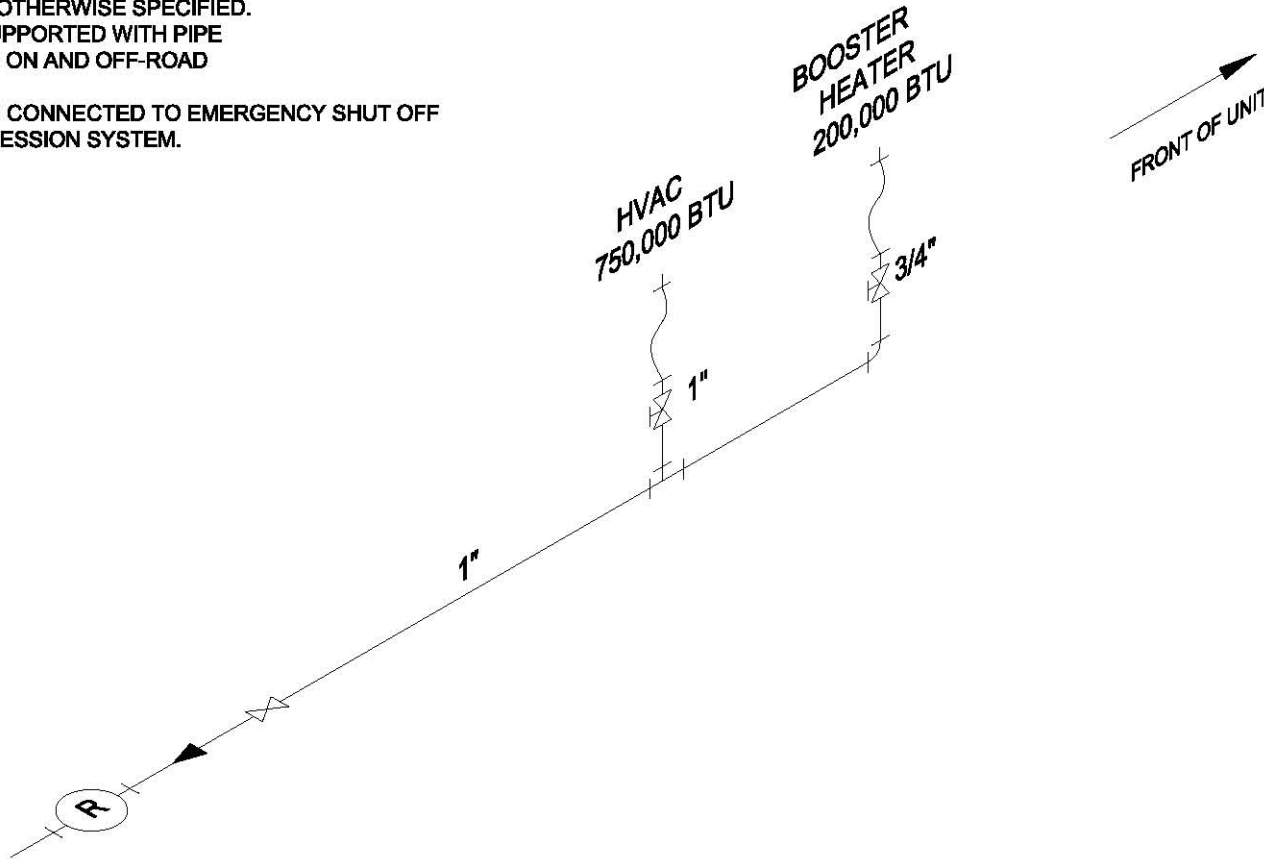
Please note: This drawing shows a typical configuration of equipment and does not necessarily show the equipment currently installed in the unit. Verify the specific equipment currently in the unit with a KTG representative.

THE DESIGN AND DETAILS DISCLOSED HEREIN ARE THE EXCLUSIVE PROPERTY OF CARLIN MANUFACTURING LLC AND SHALL NOT BE COPIED OR REPRODUCED IN WHOLE OR IN PART WITHOUT THE PRIOR WRITTEN CONSENT OF CARLIN MANUFACTURING LLC.  
© 2005 CARLIN MANUFACTURING LLC

REVISIONS				
ZONE	REV	DESCRIPTION	DATE	APPROVED

**NOTES:**

1. GAS LINES SHALL BE IN BLACK STEEL PIPE, SCHEDULE 40, UNLESS OTHERWISE SPECIFIED.
2. GAS LINES SHALL BE SUPPORTED WITH PIPE STRAPS TO WITHSTAND ON AND OFF-ROAD CONDITIONS.
3. SOLENOID VALVE TO BE CONNECTED TO EMERGENCY SHUT OFF VALVE AND FIRE SUPPRESSION SYSTEM.



SYMBOL	DESCRIPTION
	VALVE, GAS
	TEE
	90° ELBOW
	REGULATOR
	FLEX TUBING ASSEMBLY
	SOLENOID VALVE
	HYDRASTATIC RELIEF

**Kitchens To Go**  
**KTG-563**  
**MODULAR WASH UNIT**

UNLESS OTHERWISE SPECIFIED DIMENSIONS ARE IN INCHES TOLERANCES ARE:  
 FINISHES DECIMALS  
 FRACTIONS 1/8 3/16 1/4 3/8 1/2 5/8 3/4 7/8  
 ANGLES ° 30° 45° 60°  
 DO NOT SCALE DRAWINGS  
 DIMENSIONS PREPARED IN ACCORDANCE WITH A.S.I. C-395, MIL-STD-883C AND ANSI Y14.5

DATE CODE: 583P04-0-01  
 SCALE: 1:4

**CARLIN**  
 MANUFACTURING, LLC

**LP GAS**  
**PLUMBING SCHEMATIC**

DATE: 08-25-05  
 APPROVAL: GSF  
 DRAWN: GSF  
 CHECK: [ ]  
 DESIGN ACTIVITY: [ ]  
 REV: [ ]

DATE CODE: 583P04-0-01  
 SCALE: 1:4