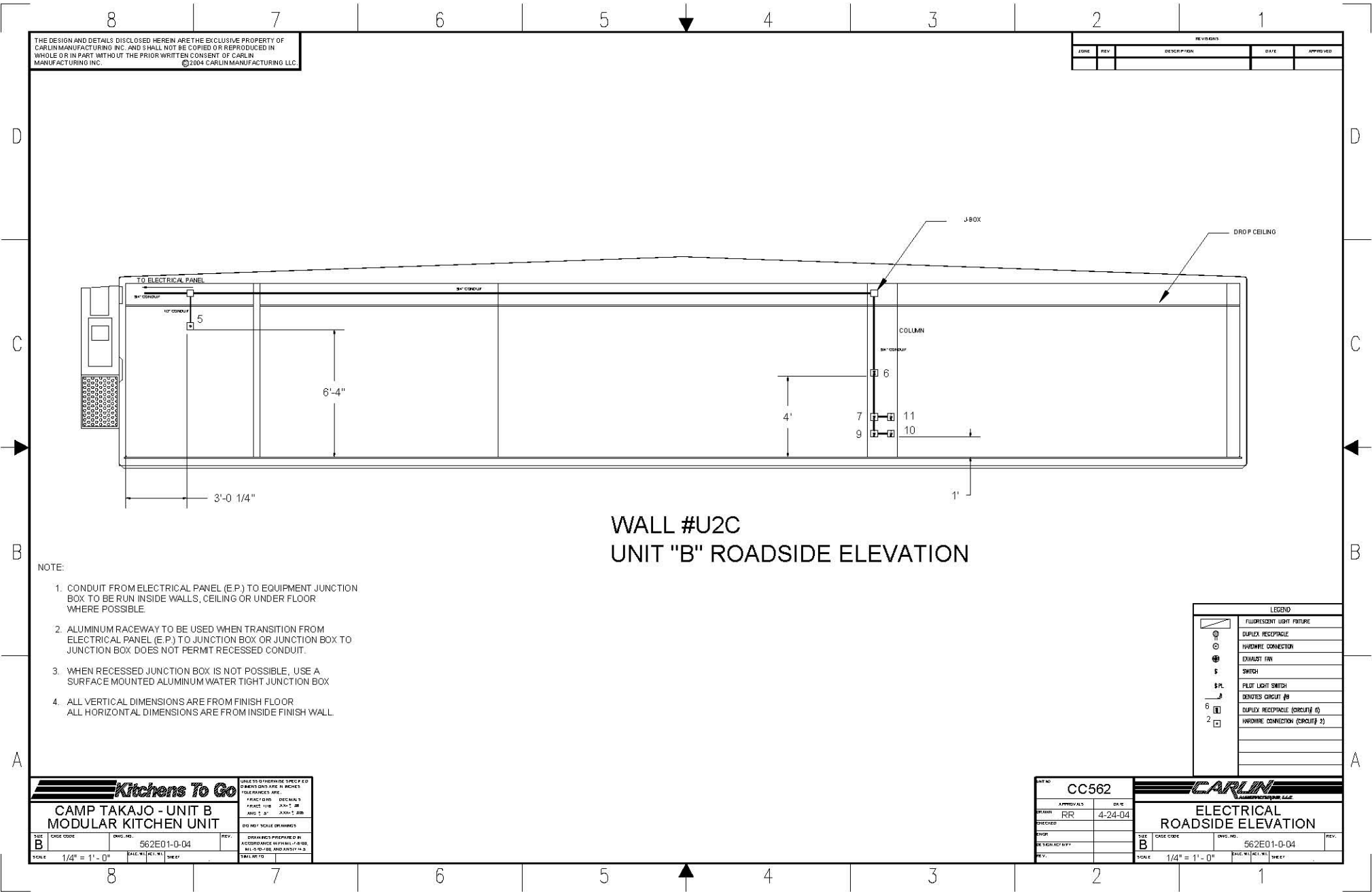


Please note: This drawing shows a typical configuration of equipment and does not necessarily show the equipment currently installed in the unit. Verify the specific equipment currently in the unit with a KTG representative.



WALL #U2C
UNIT "B" ROADSIDE ELEVATION

- NOTE:
1. CONDUIT FROM ELECTRICAL PANEL (E.P.) TO EQUIPMENT JUNCTION BOX TO BE RUN INSIDE WALLS, CEILING OR UNDER FLOOR WHERE POSSIBLE.
 2. ALUMINUM RACEWAY TO BE USED WHEN TRANSITION FROM ELECTRICAL PANEL (E.P.) TO JUNCTION BOX OR JUNCTION BOX TO JUNCTION BOX DOES NOT PERMIT RECESSED CONDUIT.
 3. WHEN RECESSED JUNCTION BOX IS NOT POSSIBLE, USE A SURFACE MOUNTED ALUMINUM WATER TIGHT JUNCTION BOX
 4. ALL VERTICAL DIMENSIONS ARE FROM FINISH FLOOR
ALL HORIZONTAL DIMENSIONS ARE FROM INSIDE FINISH WALL

| LEGEND | |
|--------|----------------------------------|
| | FLUORESCENT LIGHT FIXTURE |
| | DUPLEX RECEPTACLE |
| | HARDWIRE CONNECTION |
| | EXHAUST FAN |
| | SWITCH |
| | PILOT LIGHT SWITCH |
| | DENOTES CIRCUIT # |
| | DUPLEX RECEPTACLE (CIRCUIT# 6) |
| | HARDWIRE CONNECTION (CIRCUIT# 2) |

Kitchens To Go

CAMP TAKAJO - UNIT B
MODULAR KITCHEN UNIT

| | | | |
|------|-----------|-------------|------|
| DATE | CAGE CODE | QWG. NO. | REV. |
| B | | 562E01-0-04 | |

SCALE 1/4" = 1' - 0"

CARLIN
MANUFACTURING LLC

ELECTRICAL
ROADSIDE ELEVATION

| | |
|-------------|------|
| QWG. NO. | REV. |
| 562E01-0-04 | |

SCALE 1/4" = 1' - 0"

| | |
|----------|------|
| QWG. NO. | REV. |
| CC562 | |

| | |
|---------|-----------|
| DATE | APPROVALS |
| 4-24-04 | RR |

THE DESIGN AND DETAILS DISCLOSED HEREIN ARE THE EXCLUSIVE PROPERTY OF CARLIN MANUFACTURING INC. AND SHALL NOT BE COPIED OR REPRODUCED IN WHOLE OR IN PART WITH OUT THE PRIOR WRITTEN CONSENT OF CARLIN MANUFACTURING INC. ©2004 CARLIN MANUFACTURING LLC.

| REVISIONS | | | | |
|-----------|-----|-------------|------|----------|
| ZONE | REV | DESCRIPTION | DATE | APPROVED |
| | | | | |