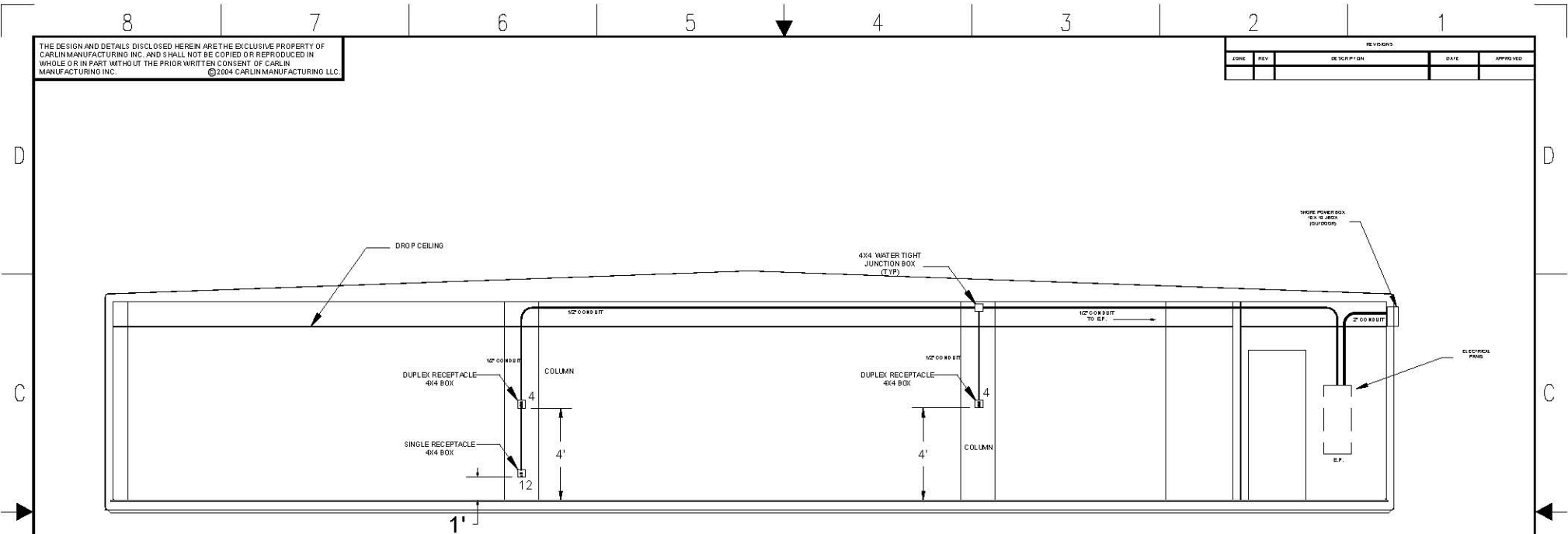


Please note: This drawing shows a typical configuration of equipment and does not necessarily show the equipment currently installed in the unit. Verify the specific equipment currently in the unit with a KTG representative.



WALL # U2A
UNIT "B" CURBSIDE ELEVATION

- NOTE:
1. CONDUIT FROM ELECTRICAL PANEL (E.P.) TO EQUIPMENT JUNCTION BOX TO BE RUN INSIDE WALLS, CEILING OR UNDER FLOOR WHERE POSSIBLE.
 2. ALUMINUM RACEWAY TO BE USED WHEN TRANSITION FROM ELECTRICAL PANEL (E.P.) TO JUNCTION BOX OR JUNCTION BOX TO JUNCTION BOX DOES NOT PERMIT RECESSED CONDUIT.
 3. WHEN RECESSED JUNCTION BOX IS NOT POSSIBLE, USE A SURFACE MOUNTED ALUMINUM WATER TIGHT JUNCTION BOX.
 4. ALL VERTICAL DIMENSIONS ARE FROM FINISH FLOOR
ALL HORIZONTAL DIMENSIONS ARE FROM INSIDE FINISH WALL.

LEGEND	
	FLUORESCENT LIGHT FIXTURE
	DUPLEX RECEPTACLE
	HARDWIRE CONNECTION
	EXHAUST FAN
	SWITCH
	PILOT LIGHT SWITCH
	DENOTES CIRCUIT #
	DUPLEX RECEPTACLE (CIRCUIT #)
	HARDWIRE CONNECTION

Kitchens To Go

CAMP TAKAJO - UNIT B
MODULAR KITCHEN UNIT

DATE OF PREVIOUS SPEC. OR ED.	DATE OF THIS SPEC. OR ED.
10/15/03	10/15/03
DESIGNED BY	DRAWN BY
JAN 1 03	JAN 1 03
CHK'D BY	APP'D BY
JAN 1 03	JAN 1 03
DO NOT SCALE DRAWINGS	
DRAWINGS PREPARED IN ACCORDANCE WITH THE 2000 NATIONAL ELECTRICAL CODE	
SCALE	1/4" = 1' - 0"

UNIT NO. CC562		CARLIN MANUFACTURING LLC	
APPROVALS	DATE	ELECTRICAL CURBSIDE ELEVATION	
DRAWN GSF	4-30-04		
CHECKED			
DESIGNED BY			
REV.			
SIZE B	CAGE CODE	DATE	REV.
		562E01-0-03	
SCALE 1/4" = 1' - 0"		SHEET	

THE DESIGN AND DETAILS DISCLOSED HEREIN ARE THE EXCLUSIVE PROPERTY OF CARLIN MANUFACTURING INC. AND SHALL NOT BE COPIED OR REPRODUCED IN WHOLE OR IN PART WITHOUT THE PRIOR WRITTEN CONSENT OF CARLIN MANUFACTURING INC. ©2004 CARLIN MANUFACTURING LLC.

REVISIONS				
ZONE	REV	DESCRIPTION	DATE	APPROVED