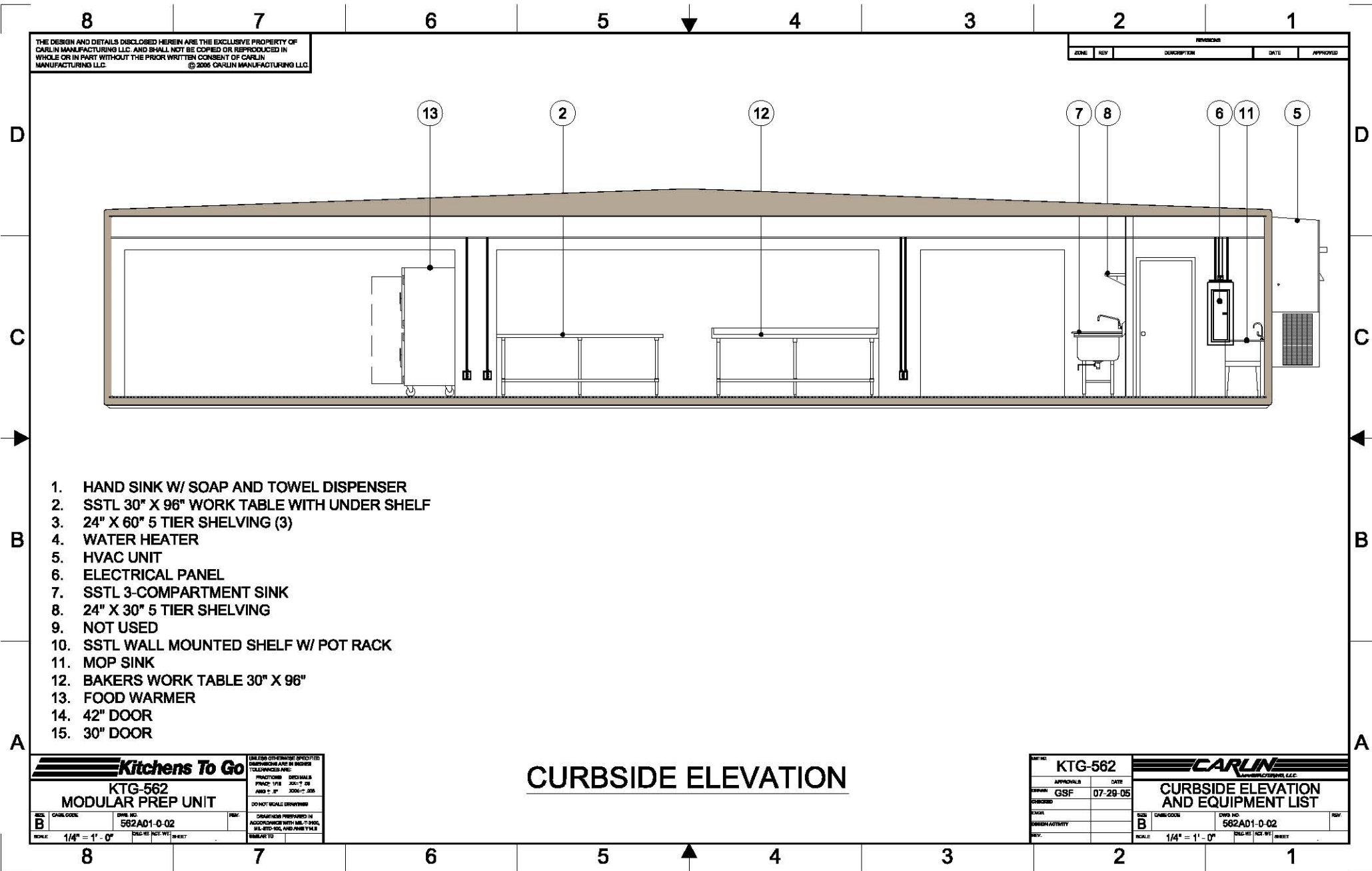


Please note: This drawing shows a typical configuration of equipment and does not necessarily show the equipment currently installed in the unit. Verify the specific equipment currently in the unit with a KTG representative.



THE DESIGN AND DETAILS DISCLOSED HEREIN ARE THE EXCLUSIVE PROPERTY OF CARLIN MANUFACTURING LLC. AND SHALL NOT BE COPIED OR REPRODUCED IN WHOLE OR IN PART WITHOUT THE PRIOR WRITTEN CONSENT OF CARLIN MANUFACTURING LLC. © 2005 CARLIN MANUFACTURING LLC.

REVISIONS				
ZONE	REV	DESCRIPTION	DATE	APPROVED

1. HAND SINK W/ SOAP AND TOWEL DISPENSER
2. SSSL 30" X 96" WORK TABLE WITH UNDER SHELF
3. 24" X 60" 5 TIER SHELVING (3)
4. WATER HEATER
5. HVAC UNIT
6. ELECTRICAL PANEL
7. SSSL 3-COMPARTMENT SINK
8. 24" X 30" 5 TIER SHELVING
9. NOT USED
10. SSSL WALL MOUNTED SHELF W/ POT RACK
11. MOP SINK
12. BAKERS WORK TABLE 30" X 96"
13. FOOD WARMER
14. 42" DOOR
15. 30" DOOR

CURBSIDE ELEVATION

Kitchens To Go
KTG-562
MODULAR PREP UNIT

UNLESS OTHERWISE SPECIFIED DIMENSIONS ARE IN INCHES TOLERANCES ARE:
 FINISHES: DECIMALS FRACTIONS DECIMALS FRACTIONS
 FINISHES: .1/8 .001" .18 .001" .25
 AND C. 1/2 .001" .25
 DO NOT SCALE DRAWINGS
 DIMENSIONS PREPARED IN ACCORDANCE WITH AIAA C-300, IBC, IFD-101, AND ANSI Y32.1

DATE: 07-29-05
 DRAWN BY: GSF
 CHECKED BY: [blank]
 DESIGNED BY: [blank]
 REV: [blank]

SCALE: 1/4" = 1' - 0"

CARLIN
 MANUFACTURING LLC

KTG-562
 CURBSIDE ELEVATION
 AND EQUIPMENT LIST

DATE: 07-29-05
 APPROVALS: GSF
 DATE: 07-29-05

SCALE: 1/4" = 1' - 0"