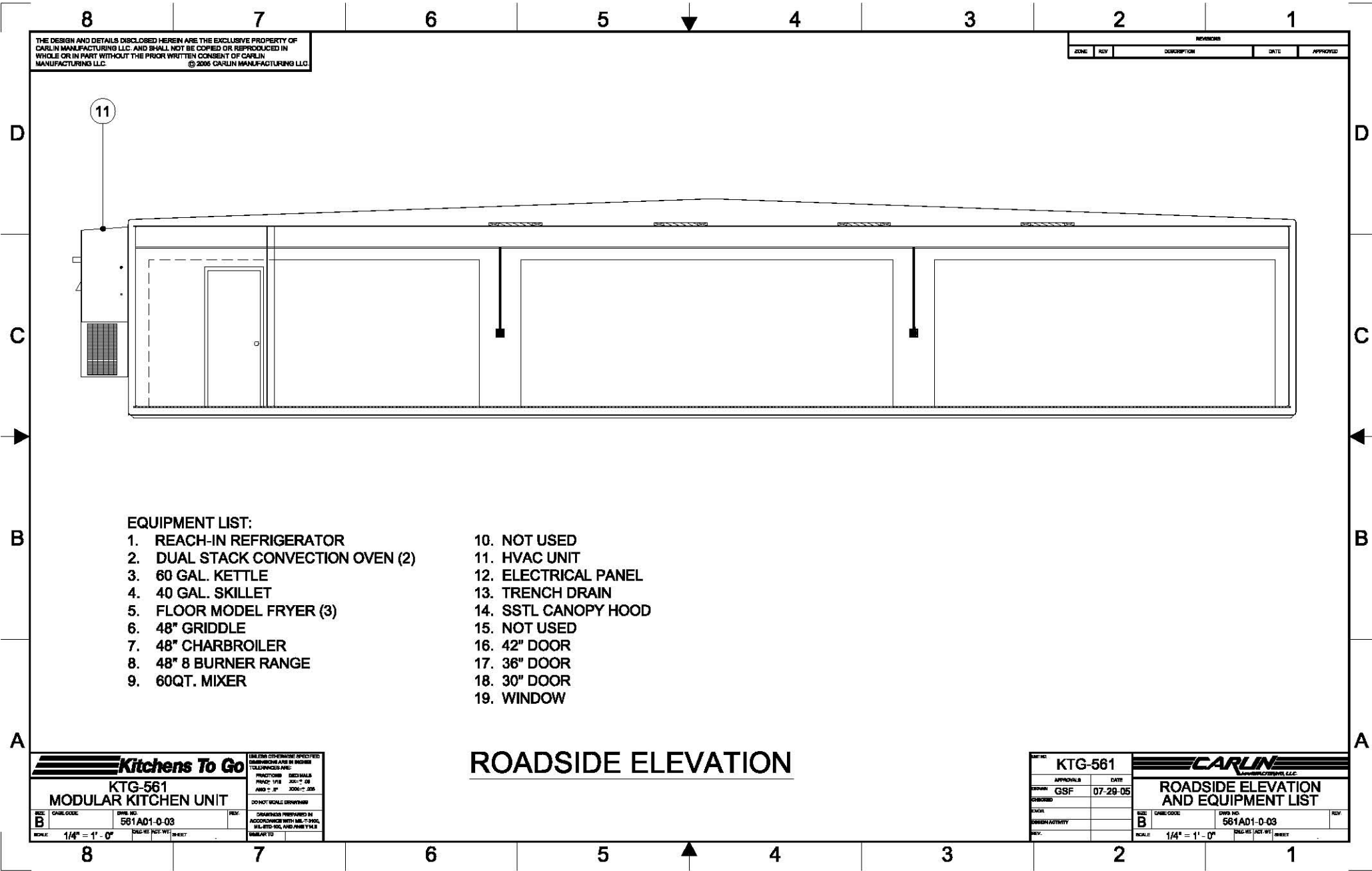


Please note: This drawing shows a typical configuration of equipment and does not necessarily show the equipment currently installed in the unit. Verify the specific equipment currently in the unit with a KTG representative.



THE DESIGN AND DETAILS DISCLOSED HEREIN ARE THE EXCLUSIVE PROPERTY OF CARLIN MANUFACTURING LLC. AND SHALL NOT BE COPIED OR REPRODUCED IN WHOLE OR IN PART WITHOUT THE PRIOR WRITTEN CONSENT OF CARLIN MANUFACTURING LLC. © 2006 CARLIN MANUFACTURING LLC.

REVISIONS				
ZONE	REV	DESCRIPTION	DATE	APPROVED

EQUIPMENT LIST:

- | | |
|-----------------------------------|----------------------|
| 1. REACH-IN REFRIGERATOR | 10. NOT USED |
| 2. DUAL STACK CONVECTION OVEN (2) | 11. HVAC UNIT |
| 3. 60 GAL. KETTLE | 12. ELECTRICAL PANEL |
| 4. 40 GAL. SKILLET | 13. TRENCH DRAIN |
| 5. FLOOR MODEL FRYER (3) | 14. SSSL CANOPY HOOD |
| 6. 48" GRIDDLE | 15. NOT USED |
| 7. 48" CHARBROILER | 16. 42" DOOR |
| 8. 48" 8 BURNER RANGE | 17. 36" DOOR |
| 9. 60QT. MIXER | 18. 30" DOOR |
| | 19. WINDOW |

ROADSIDE ELEVATION

Kitchens To Go

KTG-561
MODULAR KITCHEN UNIT

SIZE: B	CAGE CODE	DWG. NO.: 561AD1-0-03	REV.
SCALE: 1/4" = 1' - 0"	DWG. REVISIONS	DRAWINGS PREPARED IN ACCORDANCE WITH MIL-C-29500, MIL-STD-883C AND ANSI Z395.1	

DRAWING NO. KTG-561		CARLIN MANUFACTURING, LLC.	
APPROVALS	DATE	ROADSIDE ELEVATION AND EQUIPMENT LIST	
DESIGN: GSF	07-29-05	SIZE: B	DWG. NO. 561AD1-0-03
ENGINEER		SCALE: 1/4" = 1' - 0"	DWG. REVISIONS
CHECK			
DESIGN ACTIVITY			
REV.			