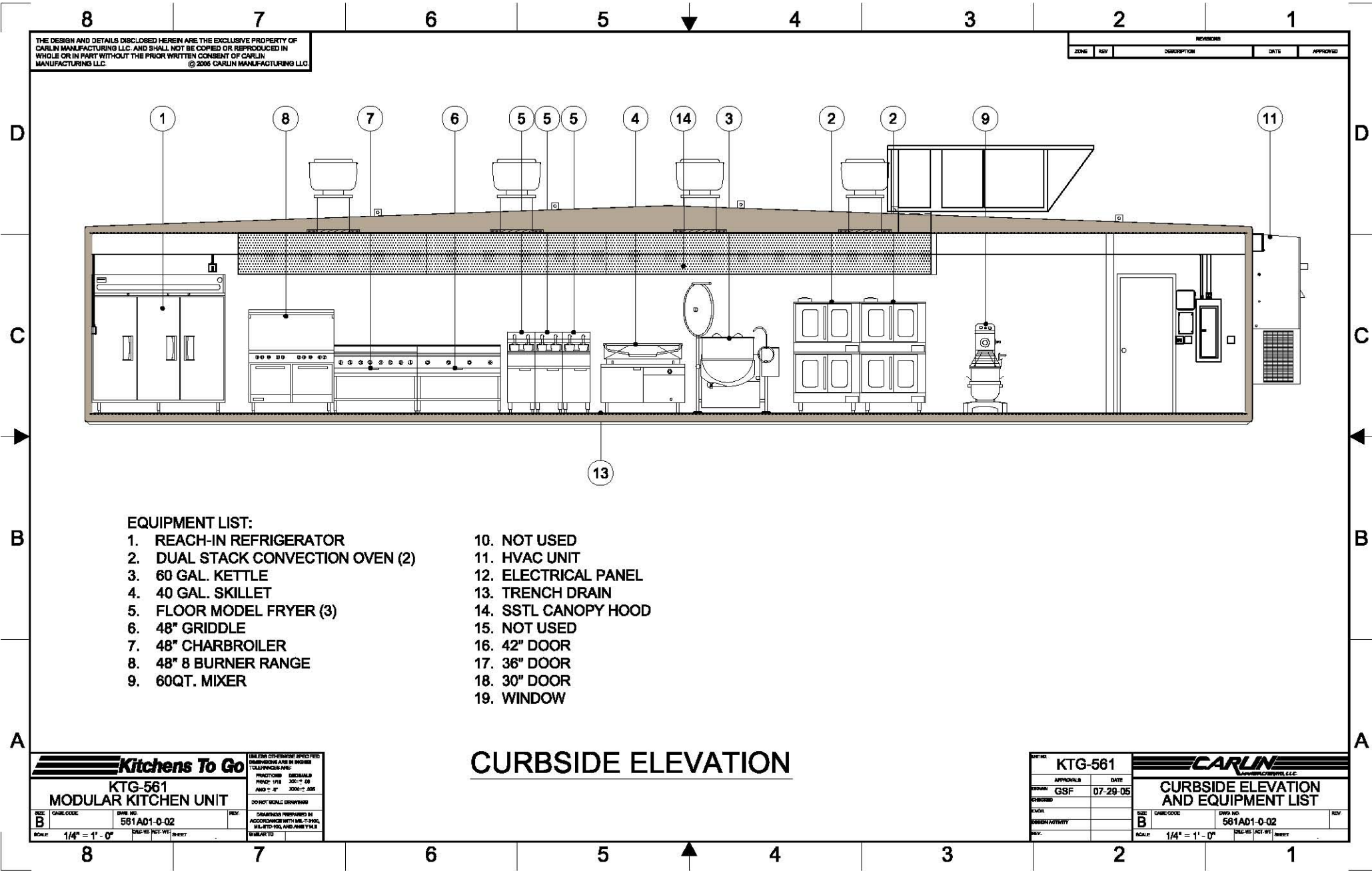


Please note: This drawing shows a typical configuration of equipment and does not necessarily show the equipment currently installed in the unit. Verify the specific equipment currently in the unit with a KTG representative.



THE DESIGN AND DETAILS DISCLOSED HEREIN ARE THE EXCLUSIVE PROPERTY OF CARLIN MANUFACTURING LLC. AND SHALL NOT BE COPIED OR REPRODUCED IN WHOLE OR IN PART WITHOUT THE PRIOR WRITTEN CONSENT OF CARLIN MANUFACTURING LLC. © 2006 CARLIN MANUFACTURING LLC.

REVISIONS				
ZONE	REV	DESCRIPTION	DATE	APPROVED

EQUIPMENT LIST:

- | | |
|-----------------------------------|----------------------|
| 1. REACH-IN REFRIGERATOR | 10. NOT USED |
| 2. DUAL STACK CONVECTION OVEN (2) | 11. HVAC UNIT |
| 3. 60 GAL. KETTLE | 12. ELECTRICAL PANEL |
| 4. 40 GAL. SKILLET | 13. TRENCH DRAIN |
| 5. FLOOR MODEL FRYER (3) | 14. SSSL CANOPY HOOD |
| 6. 48" GRIDDLE | 15. NOT USED |
| 7. 48" CHARBROILER | 16. 42" DOOR |
| 8. 48" 8 BURNER RANGE | 17. 36" DOOR |
| 9. 60QT. MIXER | 18. 30" DOOR |
| | 19. WINDOW |

CURBSIDE ELEVATION

Kitchens To Go

KTG-561
MODULAR KITCHEN UNIT

SIZE: **B** CASE CODE: 581AD1-0-02 REV: DRAWING PREPARED BY: ACCORDANCE WITH IBC-CANAL, IBC-FCI AND IBC-TILE

SCALE: 1/4" = 1' - 0" SHEET: SHEET

DATE: 07-29-05

CARLIN
LOWELL, MASSACHUSETTS, U.S.A.

CURBSIDE ELEVATION AND EQUIPMENT LIST

DATE: **KTG-561** APPROVALS: DATE:

DESIGN: **GSF** DATE: **07-29-05**

DESIGNED BY: CHECKED BY:

SCALE: 1/4" = 1' - 0" SHEET: SHEET