

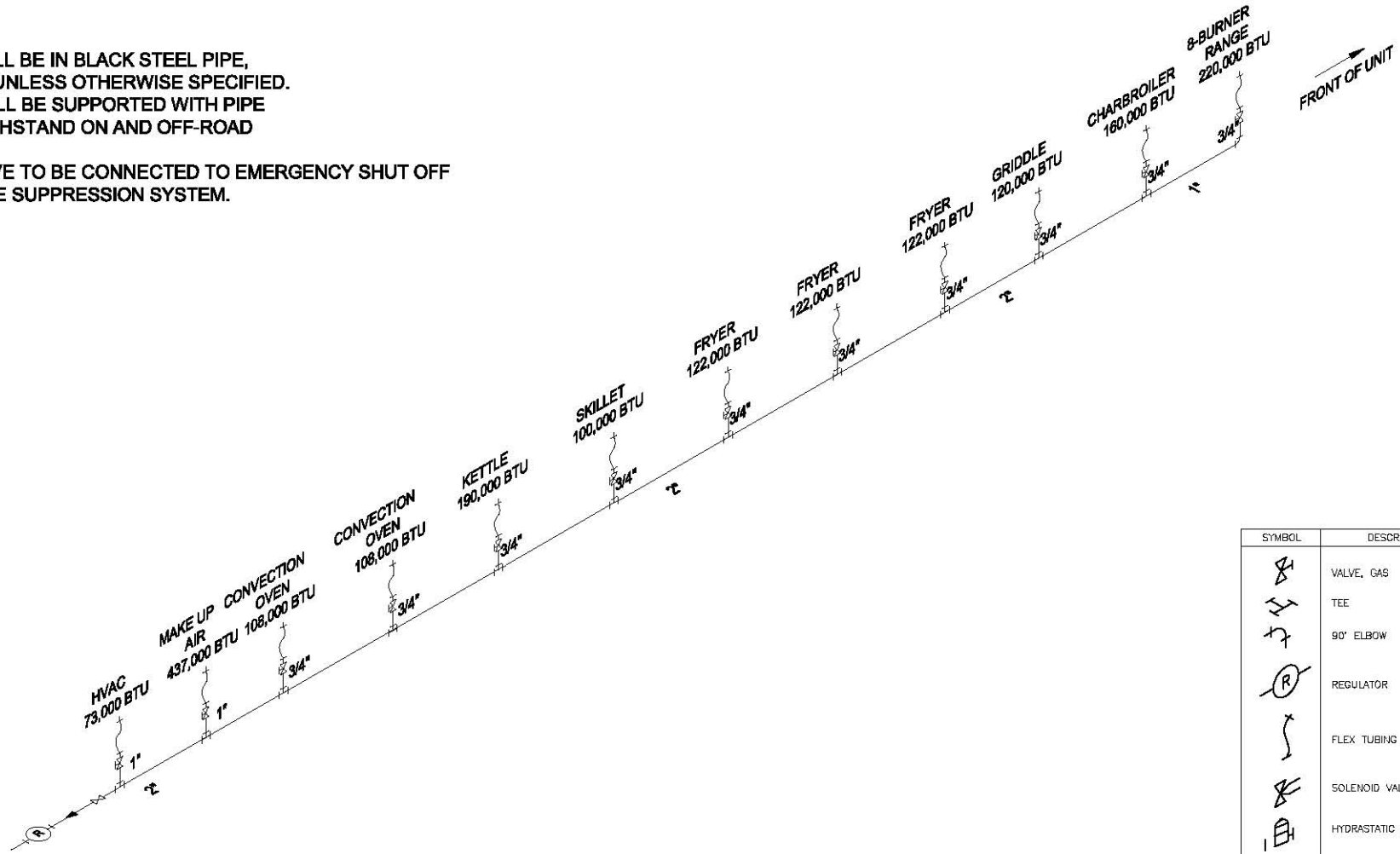
Please note: This drawing shows a typical configuration of equipment and does not necessarily show the equipment currently installed in the unit. Verify the specific equipment currently in the unit with a KTG representative.

THE DESIGN AND DETAILS DISCLOSED HEREIN ARE THE EXCLUSIVE PROPERTY OF CARLIN MANUFACTURING LLC. AND SHALL NOT BE COPIED OR REPRODUCED IN WHOLE OR IN PART WITHOUT THE PRIOR WRITTEN CONSENT OF CARLIN MANUFACTURING LLC. © 2006 CARLIN MANUFACTURING LLC

| REVISIONS | | | | |
|-----------|-----|-------------|------|----------|
| ZONE | REV | DESCRIPTION | DATE | APPROVED |
| | | | | |

NOTES:

1. GAS LINES SHALL BE IN BLACK STEEL PIPE, SCHEDULE 40, UNLESS OTHERWISE SPECIFIED.
2. GAS LINES SHALL BE SUPPORTED WITH PIPE STRAPS TO WITHSTAND ON AND OFF-ROAD CONDITIONS.
3. SOLENOID VALVE TO BE CONNECTED TO EMERGENCY SHUT OFF VALVE AND FIRE SUPPRESSION SYSTEM.



| SYMBOL | DESCRIPTION |
|--------|----------------------|
| | VALVE, GAS |
| | TEE |
| | 90° ELBOW |
| | REGULATOR |
| | FLEX TUBING ASSEMBLY |
| | SOLENOID VALVE |
| | HYDRASTATIC RELIEF |

Kitchens To Go

KTG-561
MODULAR KITCHEN UNIT

SCALE: 1:8

DATE: 08-24-05

DESIGNER: GSF

DRAWN BY: GSF

CHECKED BY: GSF

DATE: 08-24-05

SCALE: 1:8

DATE: 08-24-05

DESIGNER: GSF

DRAWN BY: GSF

CHECKED BY: GSF

DATE: 08-24-05

CARLIN
MANUFACTURING LLC

LP GAS
PLUMBING SCHEMATIC

DATE: 08-24-05

DESIGNER: GSF

DRAWN BY: GSF

CHECKED BY: GSF

DATE: 08-24-05

SCALE: 1:8

DATE: 08-24-05

DESIGNER: GSF

DRAWN BY: GSF

CHECKED BY: GSF

DATE: 08-24-05