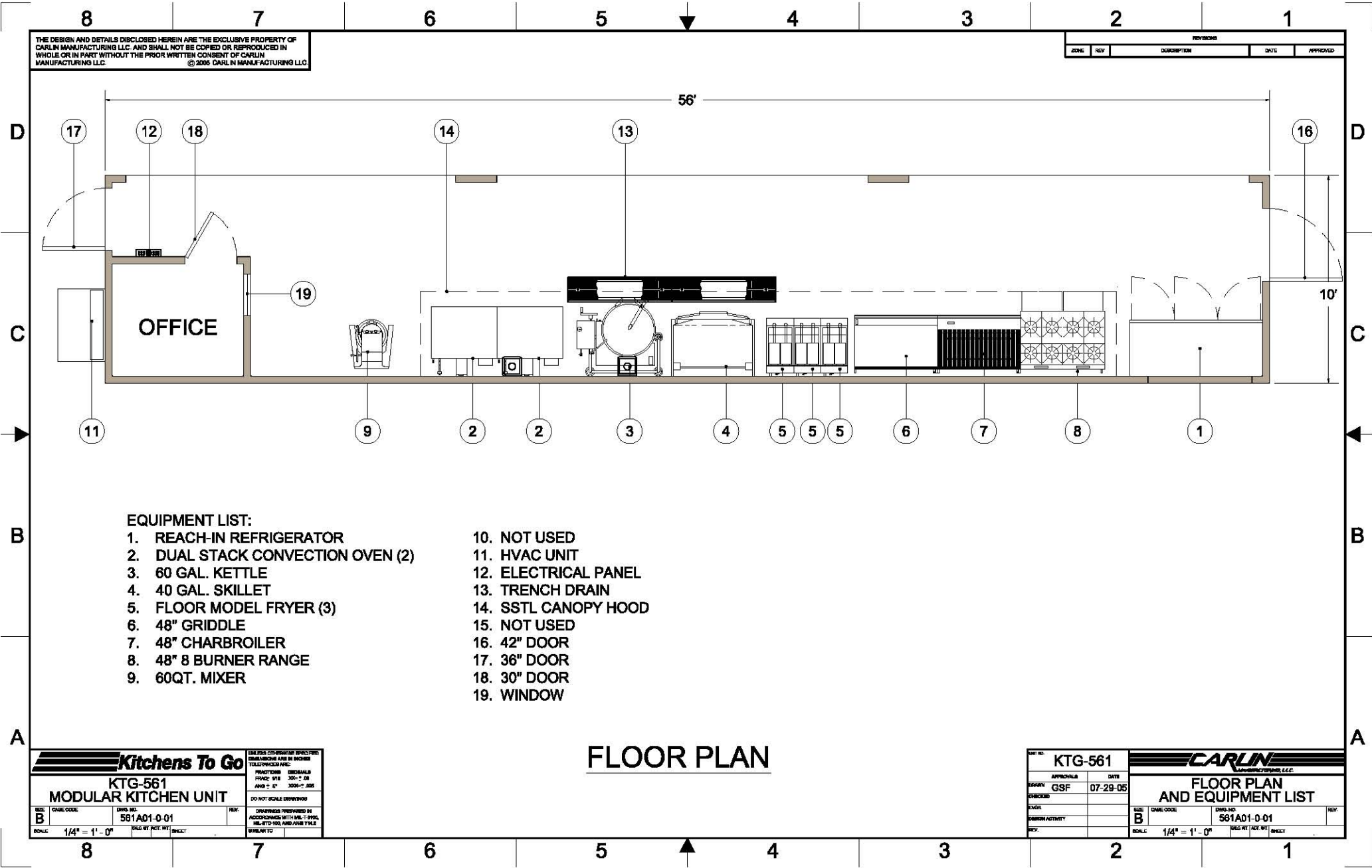


Please note: This drawing shows a typical configuration of equipment and does not necessarily show the equipment currently installed in the unit. Verify the specific equipment currently in the unit with a KTG representative.



THE DESIGN AND DETAILS DISCLOSED HEREIN ARE THE EXCLUSIVE PROPERTY OF CARLIN MANUFACTURING LLC. AND SHALL NOT BE COPIED OR REPRODUCED IN WHOLE OR IN PART WITHOUT THE PRIOR WRITTEN CONSENT OF CARLIN MANUFACTURING LLC. © 2005 CARLIN MANUFACTURING LLC

REVISIONS				
ZONE	REV	DESCRIPTION	DATE	APPROVED

EQUIPMENT LIST:

- | | |
|-----------------------------------|----------------------|
| 1. REACH-IN REFRIGERATOR | 10. NOT USED |
| 2. DUAL STACK CONVECTION OVEN (2) | 11. HVAC UNIT |
| 3. 60 GAL. KETTLE | 12. ELECTRICAL PANEL |
| 4. 40 GAL. SKILLET | 13. TRENCH DRAIN |
| 5. FLOOR MODEL FRYER (3) | 14. SSTL CANOPY HOOD |
| 6. 48" GRIDDLE | 15. NOT USED |
| 7. 48" CHARBROILER | 16. 42" DOOR |
| 8. 48" 8 BURNER RANGE | 17. 36" DOOR |
| 9. 60QT. MIXER | 18. 30" DOOR |
| | 19. WINDOW |

FLOOR PLAN

Kitchens To Go
KTG-561
MODULAR KITCHEN UNIT

SCALE: 1/4" = 1' - 0"

DATE: 07-29-05

DESIGNED BY: GSF

DATE: 07-29-05

SCALE: 1/4" = 1' - 0"

CARLIN
MANUFACTURING LLC.

FLOOR PLAN AND EQUIPMENT LIST

UNIT NO: KTG-561

APPROVALS: GSF

DATE: 07-29-05

SCALE: 1/4" = 1' - 0"

DATE: 07-29-05