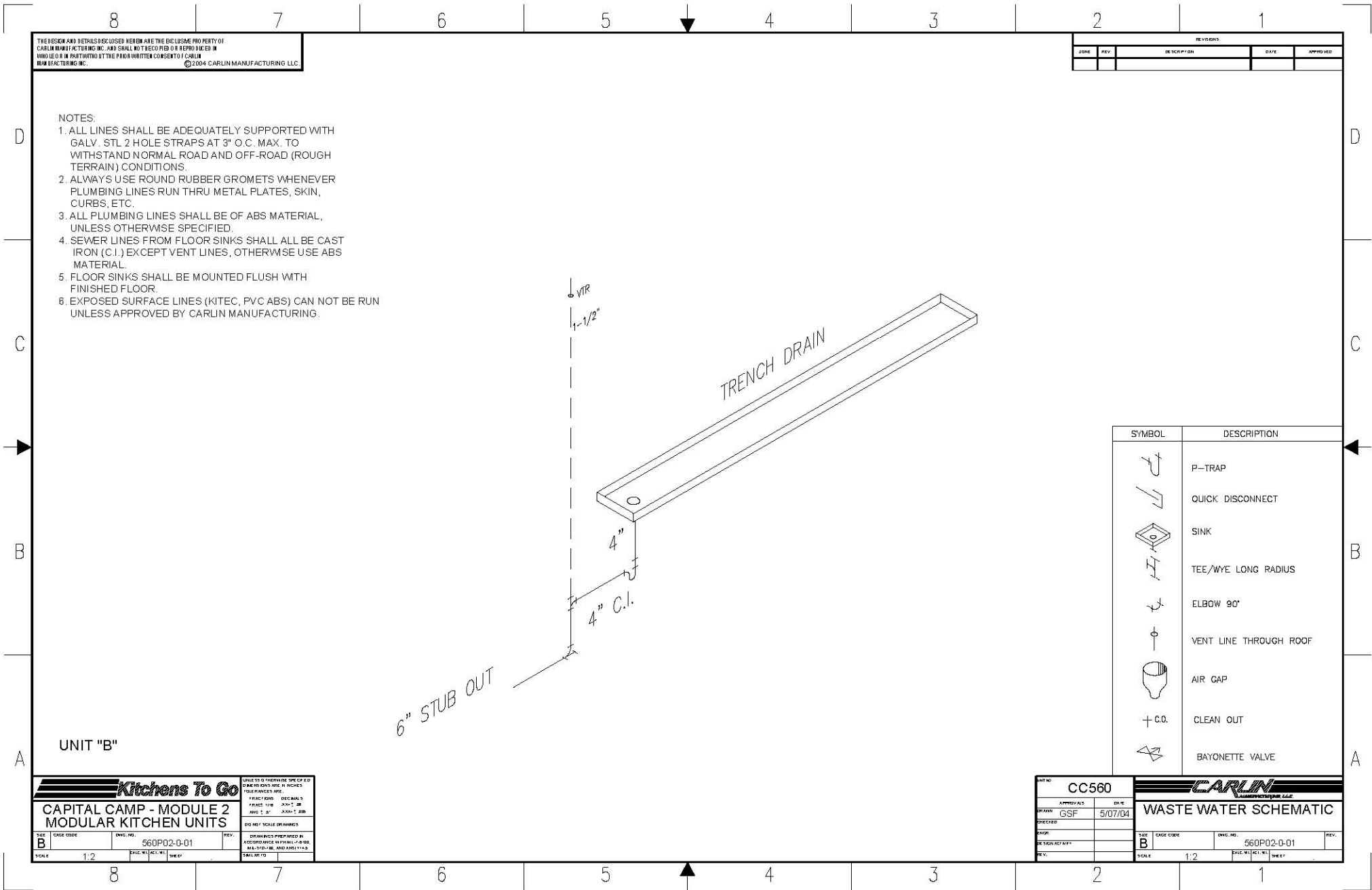


Please note: This drawing shows a typical configuration of equipment and does not necessarily show the equipment currently installed in the unit. Verify the specific equipment currently in the unit with a KTG representative.



THE DESIGN AND DETAILS DISCLOSED HEREIN ARE THE EXCLUSIVE PROPERTY OF CARLIN MANUFACTURING INC. AND SHALL NOT BE COPIED OR REPRODUCED IN WHOLE OR IN PART WITHOUT THE PRIOR WRITTEN CONSENT OF CARLIN MANUFACTURING INC. ©2004 CARLIN MANUFACTURING LLC.

| REVISIONS | | | | |
|-----------|-----|-------------|------|----------|
| DATE | REV | DESCRIPTION | DATE | APPROVED |
| | | | | |

- NOTES:
1. ALL LINES SHALL BE ADEQUATELY SUPPORTED WITH GALV. STL 2 HOLE STRAPS AT 3" O.C. MAX. TO WITHSTAND NORMAL ROAD AND OFF-ROAD (ROUGH TERRAIN) CONDITIONS.
 2. ALWAYS USE ROUND RUBBER GROMETS WHENEVER PLUMBING LINES RUN THRU METAL PLATES, SKIN, CURBS, ETC.
 3. ALL PLUMBING LINES SHALL BE OF ABS MATERIAL, UNLESS OTHERWISE SPECIFIED.
 4. SEWER LINES FROM FLOOR SINKS SHALL ALL BE CAST IRON (C.I.) EXCEPT VENT LINES, OTHERWISE USE ABS MATERIAL.
 5. FLOOR SINKS SHALL BE MOUNTED FLUSH WITH FINISHED FLOOR.
 6. EXPOSED SURFACE LINES (KITEC, PVC ABS) CAN NOT BE RUN UNLESS APPROVED BY CARLIN MANUFACTURING.

| SYMBOL | DESCRIPTION |
|--------|------------------------|
| | P-TRAP |
| | QUICK DISCONNECT |
| | SINK |
| | TEE/WYE LONG RADIUS |
| | ELBOW 90° |
| | VENT LINE THROUGH ROOF |
| | AIR GAP |
| + C.O. | CLEAN OUT |
| | BAYONETTE VALVE |

Kitchens To Go

CAPITAL CAMP - MODULE 2
MODULAR KITCHEN UNITS

UNLESS OTHERWISE SPECIFIED:
DIMENSIONS ARE IN INCHES
FRACTIONS DECIMALS
FRAC 1/8" DEC 0.125"
FRAC 1/4" DEC 0.25"
FRAC 3/8" DEC 0.375"
FRAC 1/2" DEC 0.5"
FRAC 5/8" DEC 0.625"
FRAC 3/4" DEC 0.75"
FRAC 7/8" DEC 0.875"
FRAC 1" DEC 1.000"

DO NOT SCALE DIMENSIONS

DRAWINGS PREPARED IN ACCORDANCE WITH ALL APPLICABLE NATIONAL AND LOCAL CODES

DATE: 5/07/04

SCALE: 1:2

SHEET: 1 OF 1

UNIT NO: CC560

APPROVALS: GSF DATE: 5/07/04

CHECKED: [Signature]

DESIGNED BY: [Signature]

REV: [Signature]

CARLIN MANUFACTURING LLC.

WASTE WATER SCHEMATIC

SHEET: B

CAGE CODE: 560P02-0-01

SCALE: 1:2

DATE: 5/07/04

SHEET: 1 OF 1