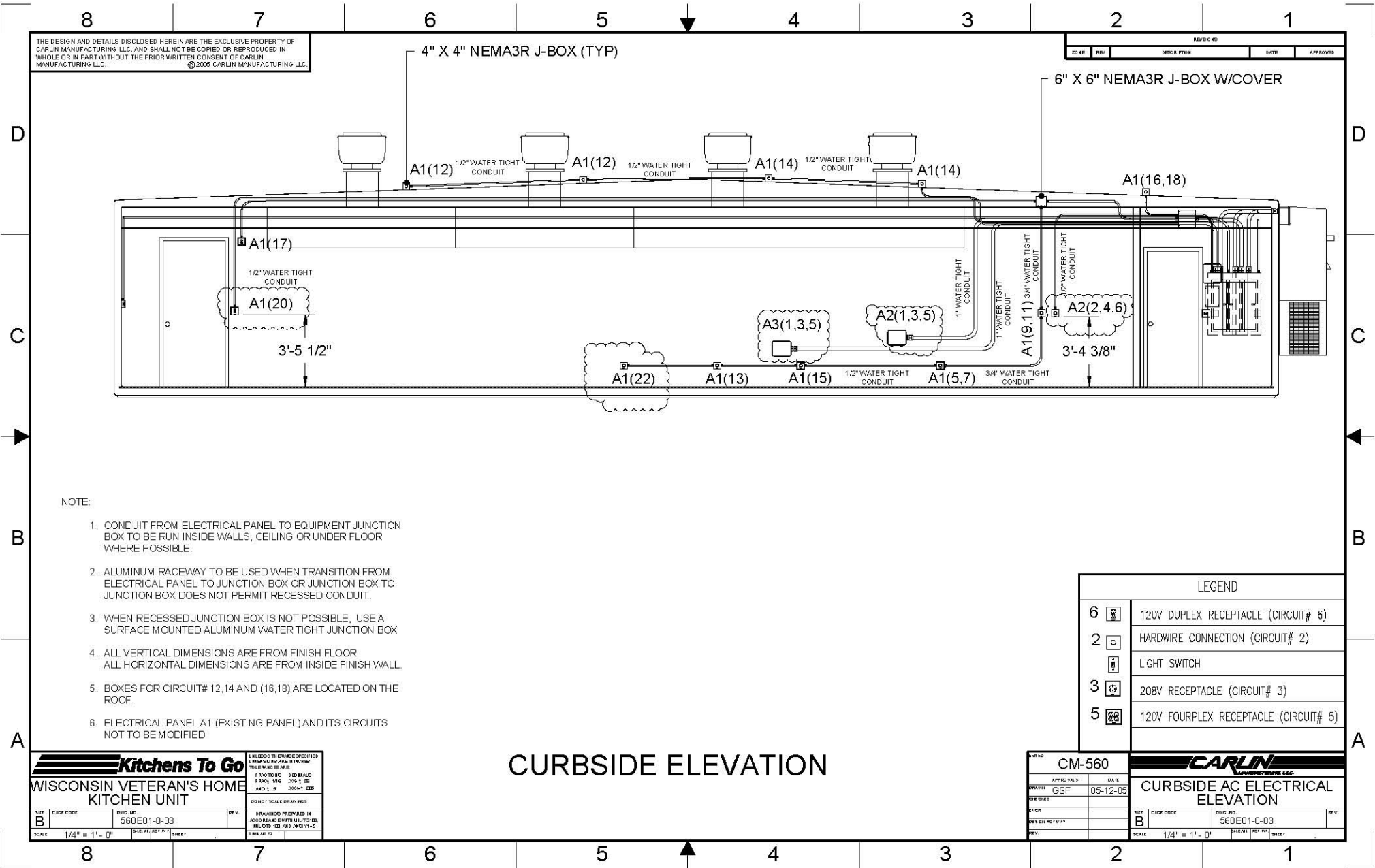


Please note: This drawing shows a typical configuration of equipment and does not necessarily show the equipment currently installed in the unit. Verify the specific equipment currently in the unit with a KTG representative.



NOTE:

1. CONDUIT FROM ELECTRICAL PANEL TO EQUIPMENT JUNCTION BOX TO BE RUN INSIDE WALLS, CEILING OR UNDER FLOOR WHERE POSSIBLE.
2. ALUMINUM RACEWAY TO BE USED WHEN TRANSITION FROM ELECTRICAL PANEL TO JUNCTION BOX OR JUNCTION BOX TO JUNCTION BOX DOES NOT PERMIT RECESSED CONDUIT.
3. WHEN RECESSED JUNCTION BOX IS NOT POSSIBLE, USE A SURFACE MOUNTED ALUMINUM WATER TIGHT JUNCTION BOX
4. ALL VERTICAL DIMENSIONS ARE FROM FINISH FLOOR ALL HORIZONTAL DIMENSIONS ARE FROM INSIDE FINISH WALL.
5. BOXES FOR CIRCUIT# 12, 14 AND (16, 18) ARE LOCATED ON THE ROOF.
6. ELECTRICAL PANEL A1 (EXISTING PANEL) AND ITS CIRCUITS NOT TO BE MODIFIED

LEGEND	
6	120V DUPLEX RECEPTACLE (CIRCUIT# 6)
2	HARDWIRE CONNECTION (CIRCUIT# 2)
1	LIGHT SWITCH
3	208V RECEPTACLE (CIRCUIT# 3)
5	120V FOURPLEX RECEPTACLE (CIRCUIT# 5)

Kitchens To Go
 WISCONSIN VETERAN'S HOME
 KITCHEN UNIT

DATE	CAGE CODE	ENG. NO.	REV.	3 DRAWINGS PREPARED IN ACCORDANCE WITH ALL TCED, REGULATORY AND APPLICABLE STANDARDS
B		560E01-0-03		
SCALE	1/4" = 1' - 0"	DRAWN BY	REV. BY	SHEET

CURBSIDE ELEVATION

UNIT NO.	CM-560	CARLIN MANUFACTURING LLC	
APPROVALS	DATE	CURBSIDE AC ELECTRICAL ELEVATION	
DRAWN	GSF	05-12-05	
CHECKED			
DESIGN			
DESIGN ACTIVITY			
REV.			
DATE			
SCALE	1/4" = 1' - 0"	SHEET	