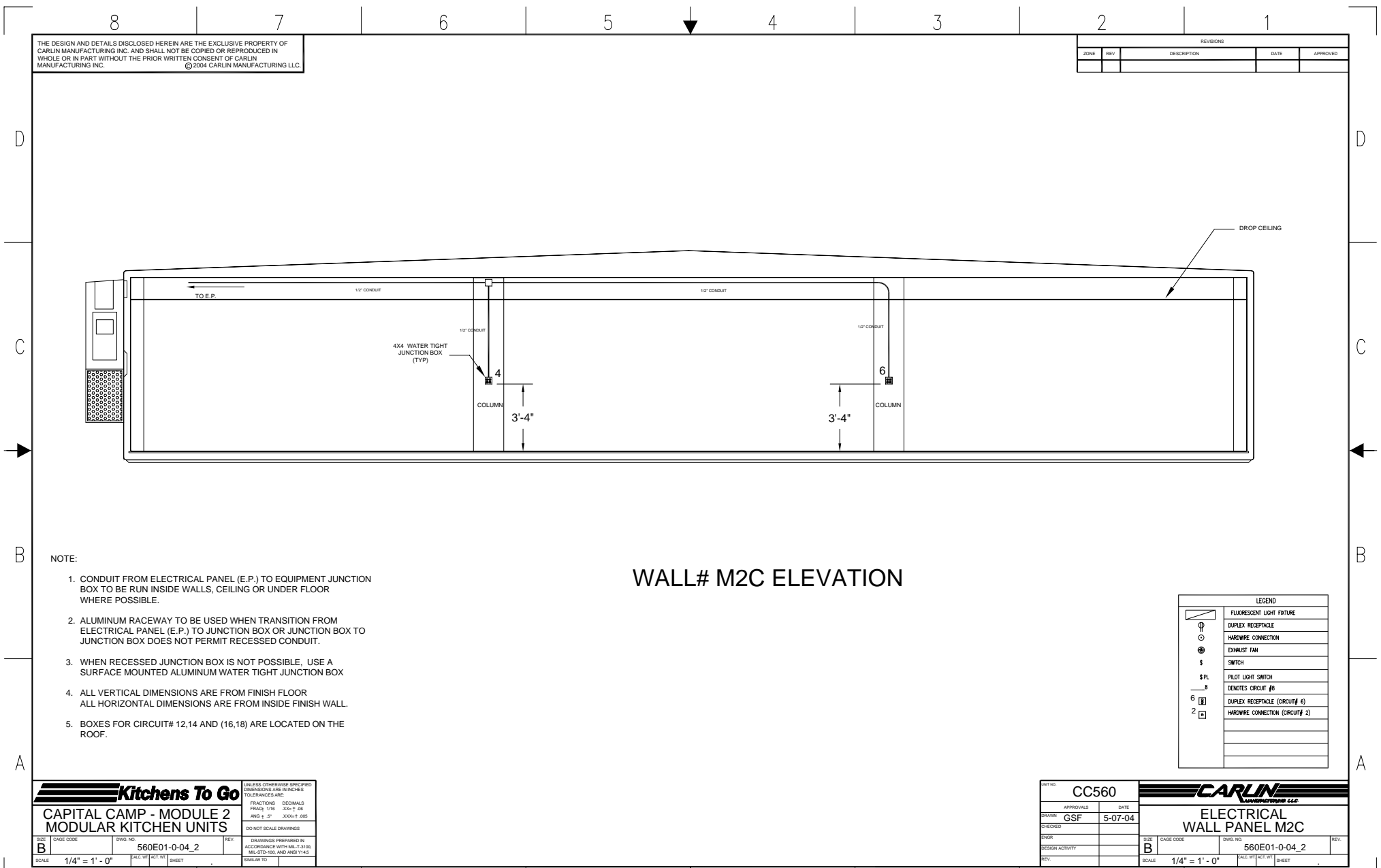


THE DESIGN AND DETAILS DISCLOSED HEREIN ARE THE EXCLUSIVE PROPERTY OF CARLIN MANUFACTURING INC. AND SHALL NOT BE COPIED OR REPRODUCED IN WHOLE OR IN PART WITHOUT THE PRIOR WRITTEN CONSENT OF CARLIN MANUFACTURING INC. © 2004 CARLIN MANUFACTURING LLC.

| REVISIONS | | | | |
|-----------|-----|-------------|------|----------|
| ZONE | REV | DESCRIPTION | DATE | APPROVED |
| | | | | |



- NOTE:
1. CONDUIT FROM ELECTRICAL PANEL (E.P.) TO EQUIPMENT JUNCTION BOX TO BE RUN INSIDE WALLS, CEILING OR UNDER FLOOR WHERE POSSIBLE.
 2. ALUMINUM RACEWAY TO BE USED WHEN TRANSITION FROM ELECTRICAL PANEL (E.P.) TO JUNCTION BOX OR JUNCTION BOX TO JUNCTION BOX DOES NOT PERMIT RECESSED CONDUIT.
 3. WHEN RECESSED JUNCTION BOX IS NOT POSSIBLE, USE A SURFACE MOUNTED ALUMINUM WATER TIGHT JUNCTION BOX
 4. ALL VERTICAL DIMENSIONS ARE FROM FINISH FLOOR
ALL HORIZONTAL DIMENSIONS ARE FROM INSIDE FINISH WALL.
 5. BOXES FOR CIRCUIT# 12,14 AND (16,18) ARE LOCATED ON THE ROOF.

WALL# M2C ELEVATION

| LEGEND | |
|--------|---------------------------------|
| | FLUORESCENT LIGHT FIXTURE |
| | DUPLEX RECEPTACLE |
| | WIREWAY CONNECTION |
| | EXHAUST FAN |
| | SWITCH |
| | PILOT LIGHT SWITCH |
| | DENOTES CIRCUIT # |
| | DUPLEX RECEPTACLE (CIRCUIT# 4) |
| | WIREWAY CONNECTION (CIRCUIT# 2) |

Kitchens To Go
CAPITAL CAMP - MODULE 2
MODULAR KITCHEN UNITS

UNLESS OTHERWISE SPECIFIED
 DIMENSIONS ARE IN INCHES
 TOLERANCES ARE:
 FRACTIONS DECIMALS
 1/16" 3/32" 0.0625"
 1/8" 0.125"
 1/4" 0.25"
 3/8" 0.375"
 1/2" 0.5"
 5/8" 0.625"
 3/4" 0.75"
 7/8" 0.875"
 1" 1.00"

DO NOT SCALE DRAWINGS

DRAWINGS PREPARED IN
 ACCORDANCE WITH MIL-T-310A,
 MIL-STD-100 AND ANSI Y14.5

SCALE: 1/4" = 1' - 0"

INT NO: **CC560**

APPROVALS: **GSF** DATE: **5-07-04**

CHECKED: **GSF**

DESIGN ACTIVITY:

REV:

CARLIN MANUFACTURING LLC

ELECTRICAL WALL PANEL M2C

SIZE: **B** CAGE CODE: **560E01-0-04_2** REV:

SCALE: 1/4" = 1' - 0"