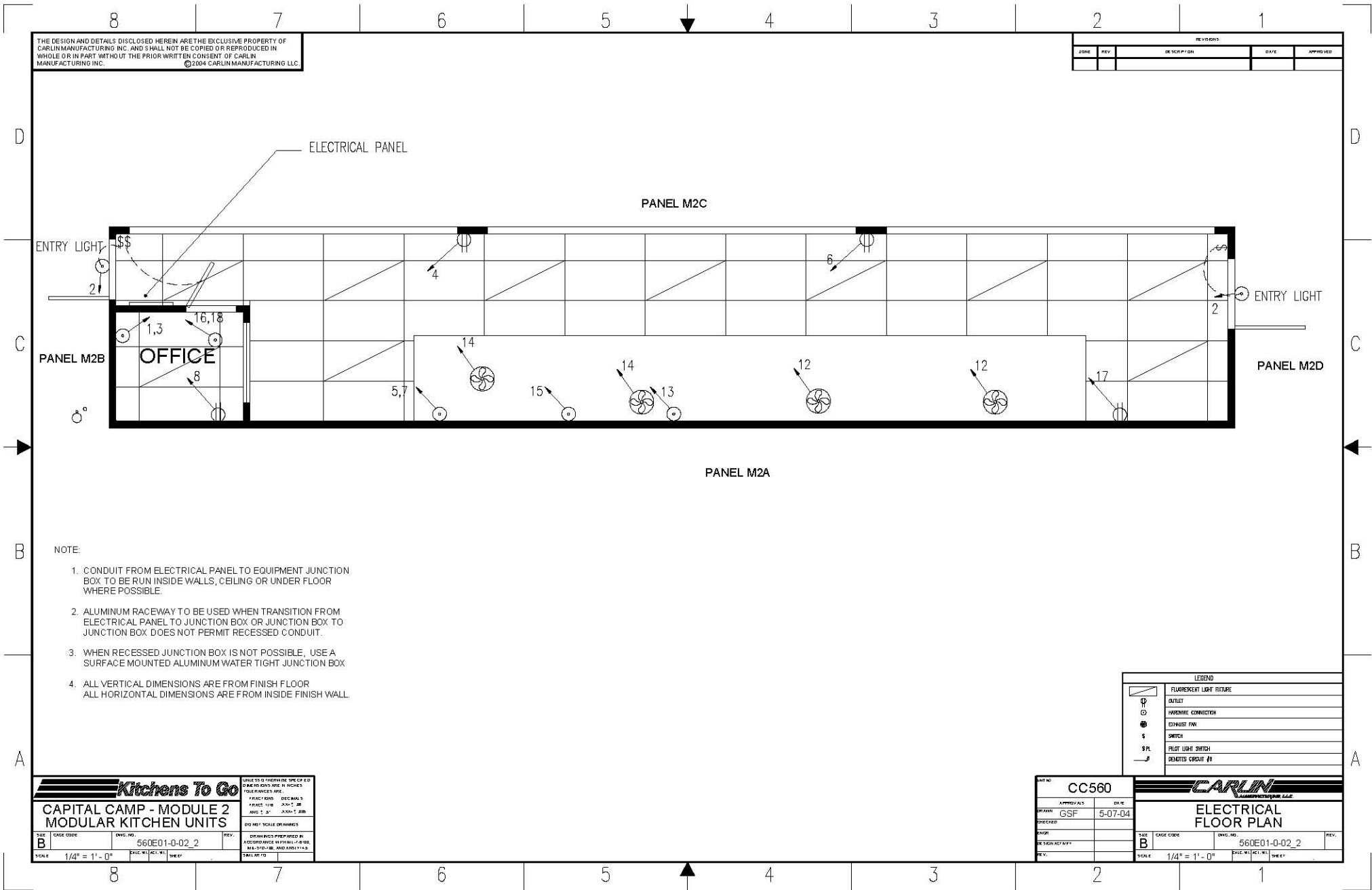


Please note: This drawing shows a typical configuration of equipment and does not necessarily show the equipment currently installed in the unit. Verify the specific equipment currently in the unit with a KTG representative.



THE DESIGN AND DETAILS DISCLOSED HEREIN ARE THE EXCLUSIVE PROPERTY OF CARLIN MANUFACTURING INC. AND SHALL NOT BE COPIED OR REPRODUCED IN WHOLE OR IN PART WITHOUT THE PRIOR WRITTEN CONSENT OF CARLIN MANUFACTURING INC. ©2004 CARLIN MANUFACTURING LLC.

REVISIONS				
DATE	REV	DESCRIPTION	DATE	APPROVED

- NOTE:
1. CONDUIT FROM ELECTRICAL PANEL TO EQUIPMENT JUNCTION BOX TO BE RUN INSIDE WALLS, CEILING OR UNDER FLOOR WHERE POSSIBLE.
 2. ALUMINUM RACEWAY TO BE USED WHEN TRANSITION FROM ELECTRICAL PANEL TO JUNCTION BOX OR JUNCTION BOX TO JUNCTION BOX DOES NOT PERMIT RECESSED CONDUIT.
 3. WHEN RECESSED JUNCTION BOX IS NOT POSSIBLE, USE A SURFACE MOUNTED ALUMINUM WATER TIGHT JUNCTION BOX
 4. ALL VERTICAL DIMENSIONS ARE FROM FINISH FLOOR
ALL HORIZONTAL DIMENSIONS ARE FROM INSIDE FINISH WALL

LEGEND	
	FLUORESCENT LIGHT FIXTURE
	OUTLET
	HARDWARE CONNECTION
	EXHAUST FAN
	SWITCH
	PILOT LIGHT SWITCH
	DEMOTES CIRCUIT #

Kitchens To Go

CAPITAL CAMP - MODULE 2
MODULAR KITCHEN UNITS

UNLESS OTHERWISE SPECIFIED:
DIMENSIONS ARE IN INCHES
FRACTIONS DECIMALS
FRAC 1/8" DEC 0.125"
FRAC 1/4" DEC 0.25"
FRAC 3/8" DEC 0.375"
FRAC 1/2" DEC 0.5"
FRAC 5/8" DEC 0.625"
FRAC 3/4" DEC 0.75"
FRAC 7/8" DEC 0.875"
FRAC 1" DEC 1.000"

DO NOT SCALE DIMENSIONS

DRAWINGS PREPARED IN ACCORDANCE WITH ALL I-9000, I-9000-1, I-9000-2, I-9000-3, I-9000-4, I-9000-5, I-9000-6, I-9000-7, I-9000-8, I-9000-9, I-9000-10, I-9000-11, I-9000-12, I-9000-13, I-9000-14, I-9000-15, I-9000-16, I-9000-17, I-9000-18, I-9000-19, I-9000-20, I-9000-21, I-9000-22, I-9000-23, I-9000-24, I-9000-25, I-9000-26, I-9000-27, I-9000-28, I-9000-29, I-9000-30, I-9000-31, I-9000-32, I-9000-33, I-9000-34, I-9000-35, I-9000-36, I-9000-37, I-9000-38, I-9000-39, I-9000-40, I-9000-41, I-9000-42, I-9000-43, I-9000-44, I-9000-45, I-9000-46, I-9000-47, I-9000-48, I-9000-49, I-9000-50, I-9000-51, I-9000-52, I-9000-53, I-9000-54, I-9000-55, I-9000-56, I-9000-57, I-9000-58, I-9000-59, I-9000-60, I-9000-61, I-9000-62, I-9000-63, I-9000-64, I-9000-65, I-9000-66, I-9000-67, I-9000-68, I-9000-69, I-9000-70, I-9000-71, I-9000-72, I-9000-73, I-9000-74, I-9000-75, I-9000-76, I-9000-77, I-9000-78, I-9000-79, I-9000-80, I-9000-81, I-9000-82, I-9000-83, I-9000-84, I-9000-85, I-9000-86, I-9000-87, I-9000-88, I-9000-89, I-9000-90, I-9000-91, I-9000-92, I-9000-93, I-9000-94, I-9000-95, I-9000-96, I-9000-97, I-9000-98, I-9000-99, I-9000-100

SCALE: 1/4" = 1'-0"

CARLIN

CC560

APPROVALS: GSF DATE: 5-07-04

CHECKED: []

DESIGNED BY: []

REV: []

ELECTRICAL FLOOR PLAN

SCALE: 1/4" = 1'-0"