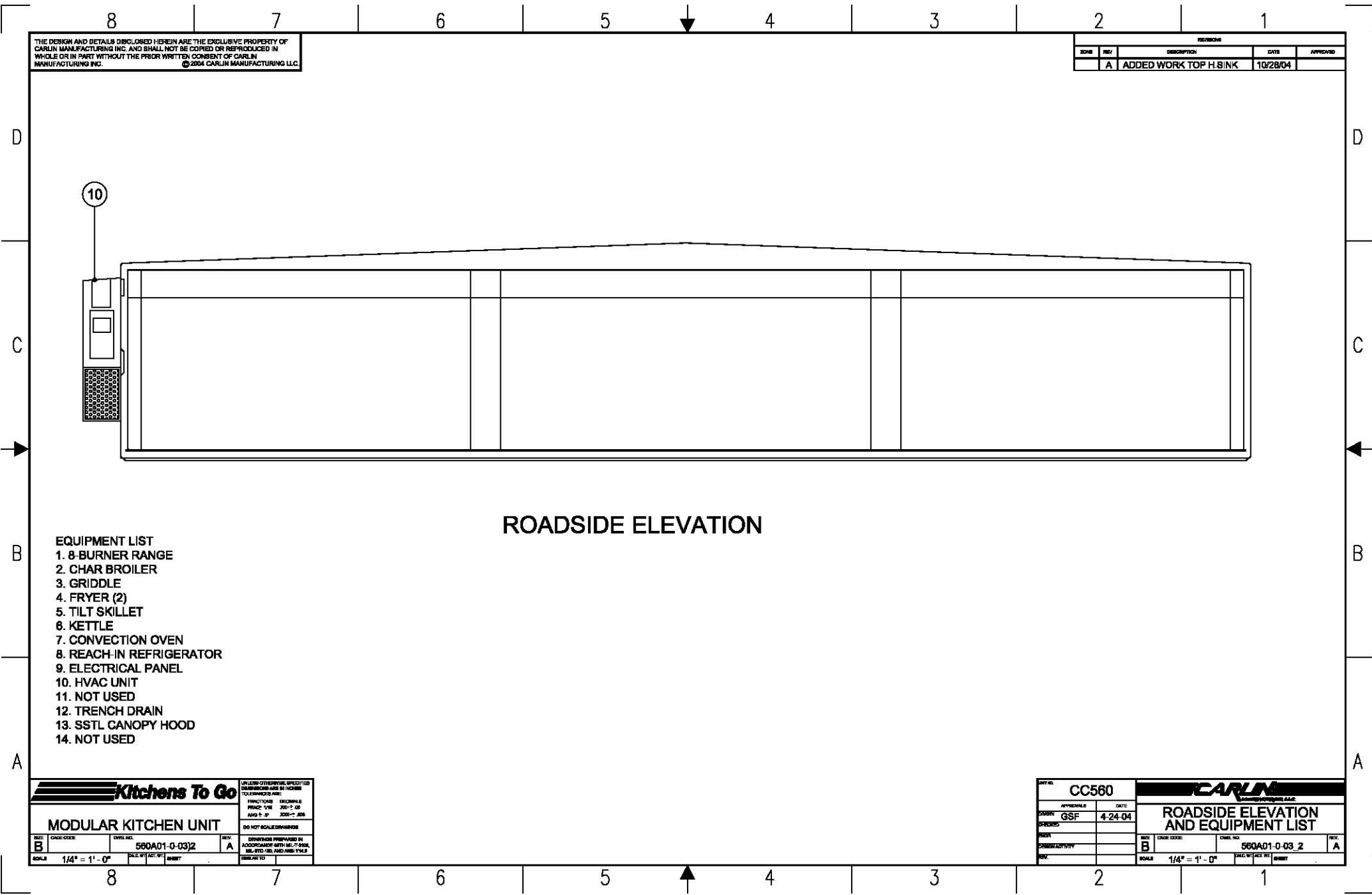


Please note: This drawing shows a typical configuration of equipment and does not necessarily show the equipment currently installed in the unit. Verify the specific equipment currently in the unit with a KTG representative.



ROADSIDE ELEVATION

- EQUIPMENT LIST**
- 1. 8-BURNER RANGE
 - 2. CHAR BROILER
 - 3. GRIDDLE
 - 4. FRYER (2)
 - 5. TILT SKILLET
 - 6. KETTLE
 - 7. CONVECTION OVEN
 - 8. REACH-IN REFRIGERATOR
 - 9. ELECTRICAL PANEL
 - 10. HVAC UNIT
 - 11. NOT USED
 - 12. TRENCH DRAIN
 - 13. SSSL GANOPY HOOD
 - 14. NOT USED

THE DESIGN AND DETAILS DISCLOSED HEREIN ARE THE EXCLUSIVE PROPERTY OF CARLIN MANUFACTURING INC. AND SHALL NOT BE COPIED OR REPRODUCED IN WHOLE OR IN PART WITHOUT THE PRIOR WRITTEN CONSENT OF CARLIN MANUFACTURING INC. ©2004 CARLIN MANUFACTURING LLC.

REVISIONS				
NO.	REV.	DESCRIPTION	DATE	APPROVED
A		ADDED WORK TOP H.SINK	10/28/04	

Kitchens To Go

MODULAR KITCHEN UNIT

UNLESS OTHERWISE SPECIFIED DIMENSIONS ARE IN INCHES
TOLERANCES ARE:
FINISHES: DECIMALS
FINISH: 1/8" 3/16" 1/4"
MATERIALS: 1/8" 1/4" 3/16" 1/2"

DO NOT SCALE DIMENSIONS

DRAWINGS PREPARED IN ACCORDANCE WITH MECHANICAL, ELECTRICAL AND PLUMBING CODES

DATE: 4-24-04

SCALE: 1/4" = 1' - 0"

CARLIN MANUFACTURING LLC

ROADSIDE ELEVATION AND EQUIPMENT LIST

UNIT NO: CC560

DATE: 4-24-04

SCALE: 1/4" = 1' - 0"