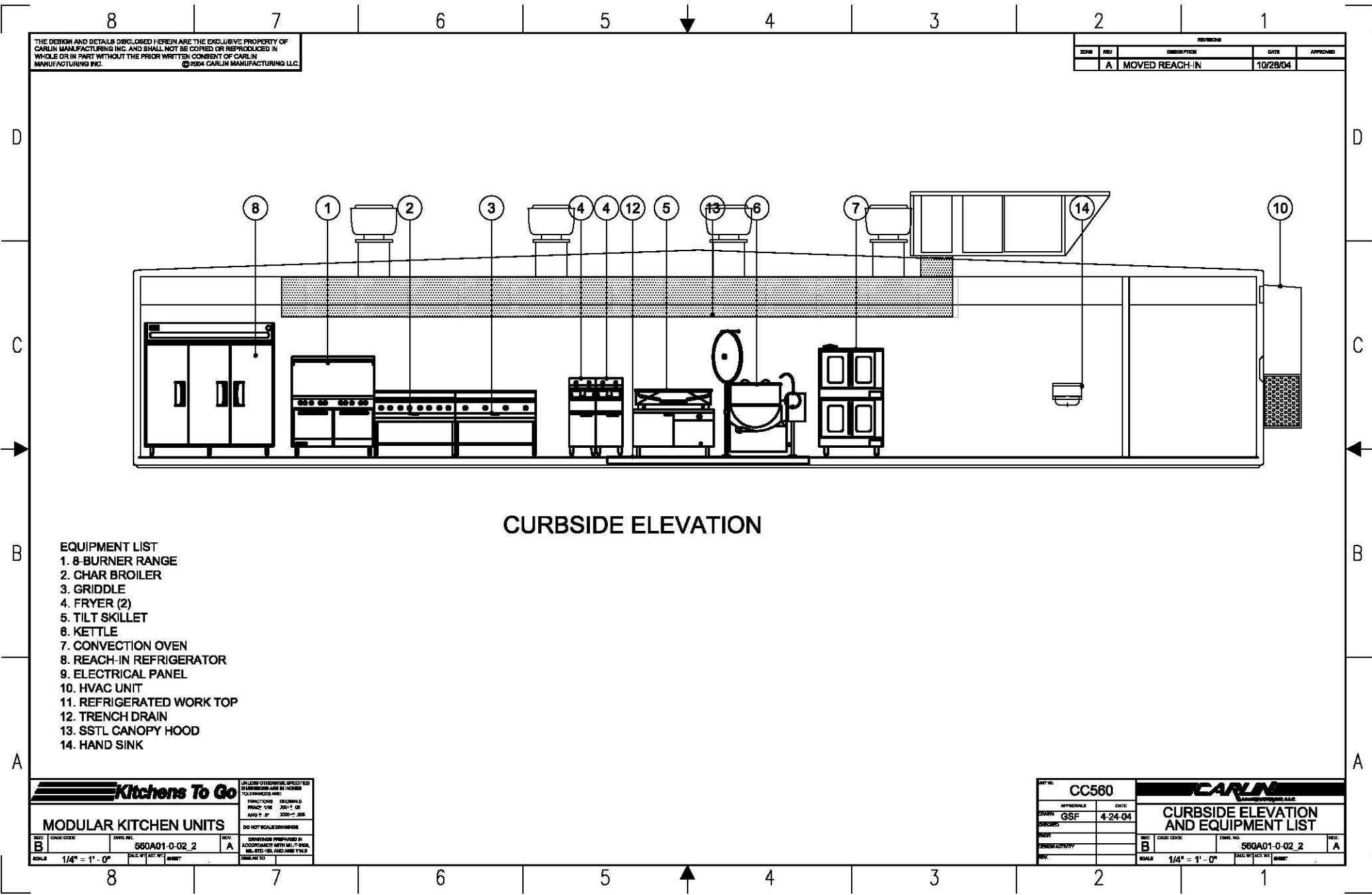


Please note: This drawing shows a typical configuration of equipment and does not necessarily show the equipment currently installed in the unit. Verify the specific equipment currently in the unit with a KTG representative.



CURBSIDE ELEVATION

- EQUIPMENT LIST**
- 1. 8-BURNER RANGE
 - 2. CHAR BROILER
 - 3. GRIDDLE
 - 4. FRYER (2)
 - 5. TILT SKILLET
 - 6. KETTLE
 - 7. CONVECTION OVEN
 - 8. REACH-IN REFRIGERATOR
 - 9. ELECTRICAL PANEL
 - 10. HVAC UNIT
 - 11. REFRIGERATED WORK TOP
 - 12. TRENCH DRAIN
 - 13. SSTL CANOPY HOOD
 - 14. HAND SINK

THE DESIGN AND DETAILS DISCLOSED HEREIN ARE THE EXCLUSIVE PROPERTY OF CARLIN MANUFACTURING INC. AND SHALL NOT BE COPIED OR REPRODUCED IN WHOLE OR IN PART WITHOUT THE PRIOR WRITTEN CONSENT OF CARLIN MANUFACTURING INC. ©2004 CARLIN MANUFACTURING LLC

DATE	REV	DESCRIPTION	DATE	APPROVED
	A	MOVED REACH-IN	10/28/04	

Kitchens To Go

UNLESS OTHERWISE SPECIFIED DIMENSIONS ARE IN INCHES. TOLERANCES ARE:

FUNCTIONS: ORIGINAL
 FINISH: 1/8" JOE-1.00
 ANGLE: 1/8" 300-1.00

DO NOT SCALE DIMENSIONS

DESIGNING PREPARED IN ACCORDANCE WITH MECHANICAL, ETC. AND ANSI Y32.2

DATE: 4-24-04

SCALE: 1/4" = 1' - 0"

CC560

CARLIN
 MANUFACTURING LLC

CURBSIDE ELEVATION AND EQUIPMENT LIST

DATE: 4-24-04

SCALE: 1/4" = 1' - 0"