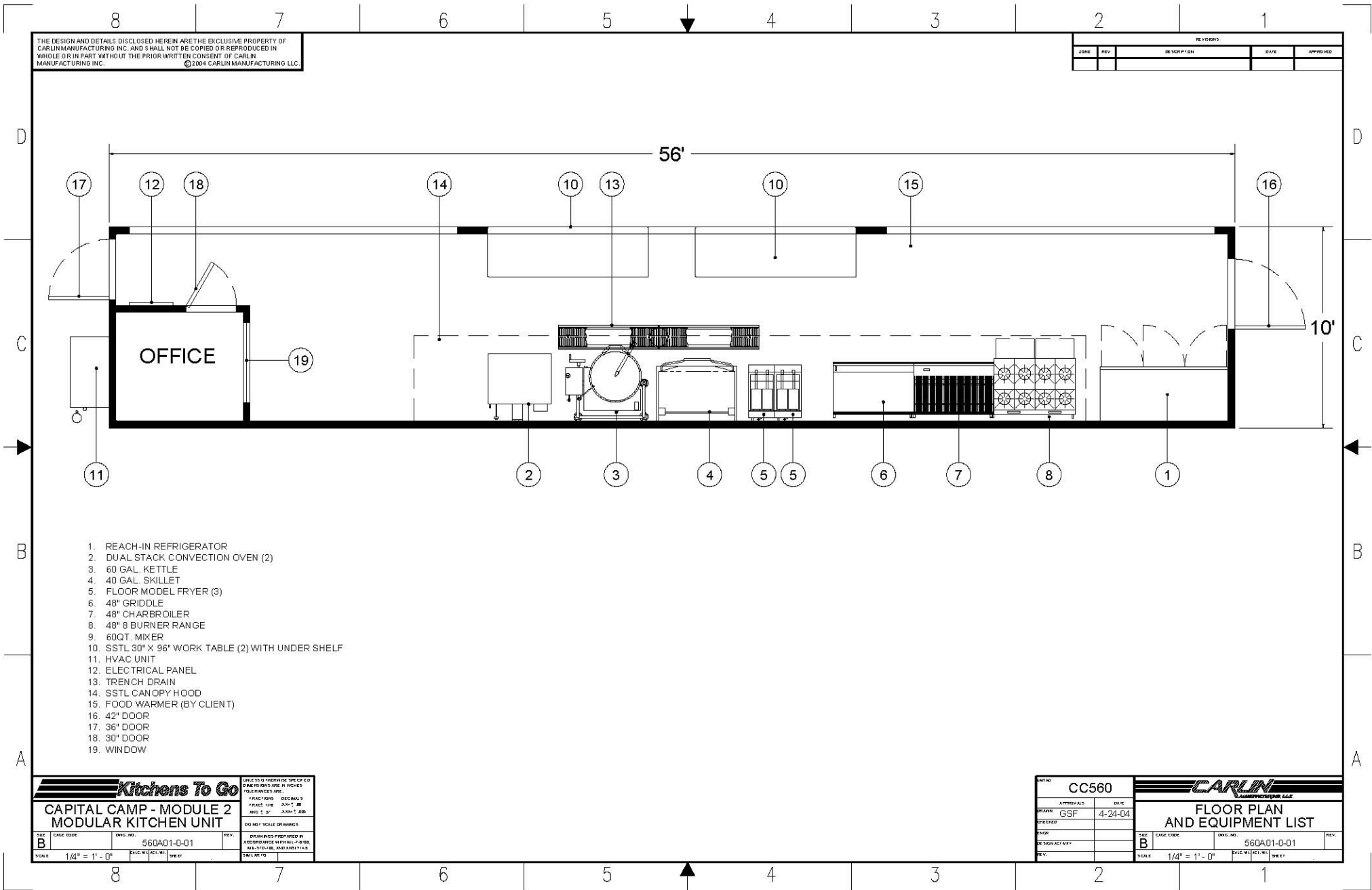


Please note: This drawing shows a typical configuration of equipment and does not necessarily show the equipment currently installed in the unit. Verify the specific equipment currently in the unit with a KTG representative.



THE DESIGN AND DETAILS DISCLOSED HEREIN ARE THE EXCLUSIVE PROPERTY OF CARLIN MANUFACTURING INC. AND SHALL NOT BE COPIED OR REPRODUCED IN WHOLE OR IN PART WITHOUT THE PRIOR WRITTEN CONSENT OF CARLIN MANUFACTURING INC. ©2004 CARLIN MANUFACTURING LLC

REVISIONS				
DATE	REV	DESCRIPTION	DATE	APPROVED

1. REACH-IN REFRIGERATOR
2. DUAL STACK CONVECTION OVEN (2)
3. 60 GAL. KETTLE
4. 40 GAL. SKILLET
5. FLOOR MODEL FRYER (3)
6. 48" GRIDDLE
7. 48" CHARBROILER
8. 48" 8 BURNER RANGE
9. 60QT. MIXER
10. SSSL 30" X 96" WORK TABLE (2) WITH UNDER SHELF
11. HVAC UNIT
12. ELECTRICAL PANEL
13. TRENCH DRAIN
14. SSSL CANOPY HOOD
15. FOOD WARMER (BY CLIENT)
16. 42" DOOR
17. 36" DOOR
18. 30" DOOR
19. WINDOW

Kitchens To Go

**CAPITAL CAMP - MODULE 2
MODULAR KITCHEN UNIT**

SCALE: 1/4" = 1' - 0"	DATE: 4-24-04	DESIGNED BY: GSF	CHECKED BY: GSF
-----------------------	---------------	------------------	-----------------

UNLESS OTHERWISE SPECIFIED, DIMENSIONS ARE IN INCHES. TOLERANCES ARE: FINISH: ±.005 DECIMALS; FRACTIONS: 1/8, 1/4, 1/2, 3/4, 1, 1 1/2, 2, 3, 4, 6, 8, 12, 18, 24, 30, 36, 48, 60, 72, 96. DIMENSIONS ARE TO FACE UNLESS OTHERWISE NOTED. DIMENSIONS ARE TO FACE UNLESS OTHERWISE NOTED. DIMENSIONS ARE TO FACE UNLESS OTHERWISE NOTED.

DESIGNED BY: GSF
CHECKED BY: GSF
DATE: 4-24-04

CARLIN
MANUFACTURING LLC

**FLOOR PLAN
AND EQUIPMENT LIST**

UNIT NO: CC560	DATE: 4-24-04	SCALE: 1/4" = 1' - 0"
APPROVALS: GSF	DATE: 4-24-04	DESIGNED BY: GSF
CHECKED BY: GSF	DATE: 4-24-04	CASE CODE: 560A01-0-01
DATE: 4-24-04	SCALE: 1/4" = 1' - 0"	DATE: 4-24-04