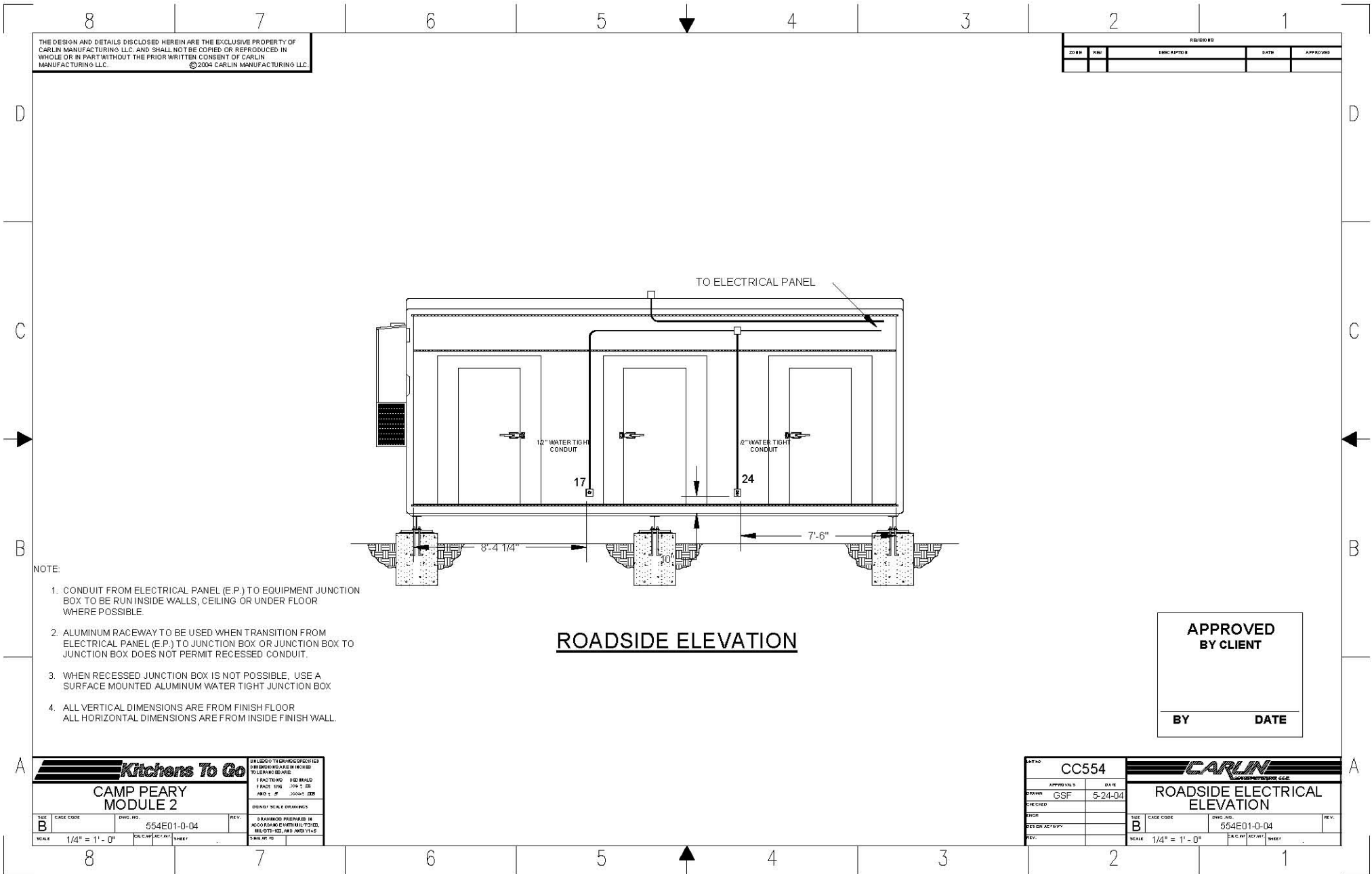


Please note: This drawing shows a typical configuration of equipment and does not necessarily show the equipment currently installed in the unit. Verify the specific equipment currently in the unit with a KTG representative.



THE DESIGN AND DETAILS DISCLOSED HEREIN ARE THE EXCLUSIVE PROPERTY OF CARLIN MANUFACTURING LLC, AND SHALL NOT BE COPIED OR REPRODUCED IN WHOLE OR IN PART WITHOUT THE PRIOR WRITTEN CONSENT OF CARLIN MANUFACTURING LLC. ©2004 CARLIN MANUFACTURING LLC.

REVISIONS				
ZONE	REV	DESCRIPTION	DATE	APPROVED

- NOTE:
1. CONDUIT FROM ELECTRICAL PANEL (E.P.) TO EQUIPMENT JUNCTION BOX TO BE RUN INSIDE WALLS, CEILING OR UNDER FLOOR WHERE POSSIBLE.
 2. ALUMINUM RACEWAY TO BE USED WHEN TRANSITION FROM ELECTRICAL PANEL (E.P.) TO JUNCTION BOX OR JUNCTION BOX TO JUNCTION BOX DOES NOT PERMIT RECESSED CONDUIT.
 3. WHEN RECESSED JUNCTION BOX IS NOT POSSIBLE, USE A SURFACE MOUNTED ALUMINUM WATER TIGHT JUNCTION BOX
 4. ALL VERTICAL DIMENSIONS ARE FROM FINISH FLOOR
ALL HORIZONTAL DIMENSIONS ARE FROM INSIDE FINISH WALL.

ROADSIDE ELEVATION

APPROVED BY CLIENT

BY _____ DATE _____

Kitchens To Go

CAMP PEARY MODULE 2

REV: B	CAGE CODE: 554E01-0-04	REV: 1
SCALE: 1/4" = 1'-0"	DATE: 5-24-04	SHEET: 1

CARLIN MANUFACTURING LLC

ROADSIDE ELECTRICAL ELEVATION

INFO: CC554	DATE: 5-24-04
DRAWN: GSF	CHECKED: []
DATE: 5-24-04	SCALE: 1/4" = 1'-0"
REV: []	SHEET: 1