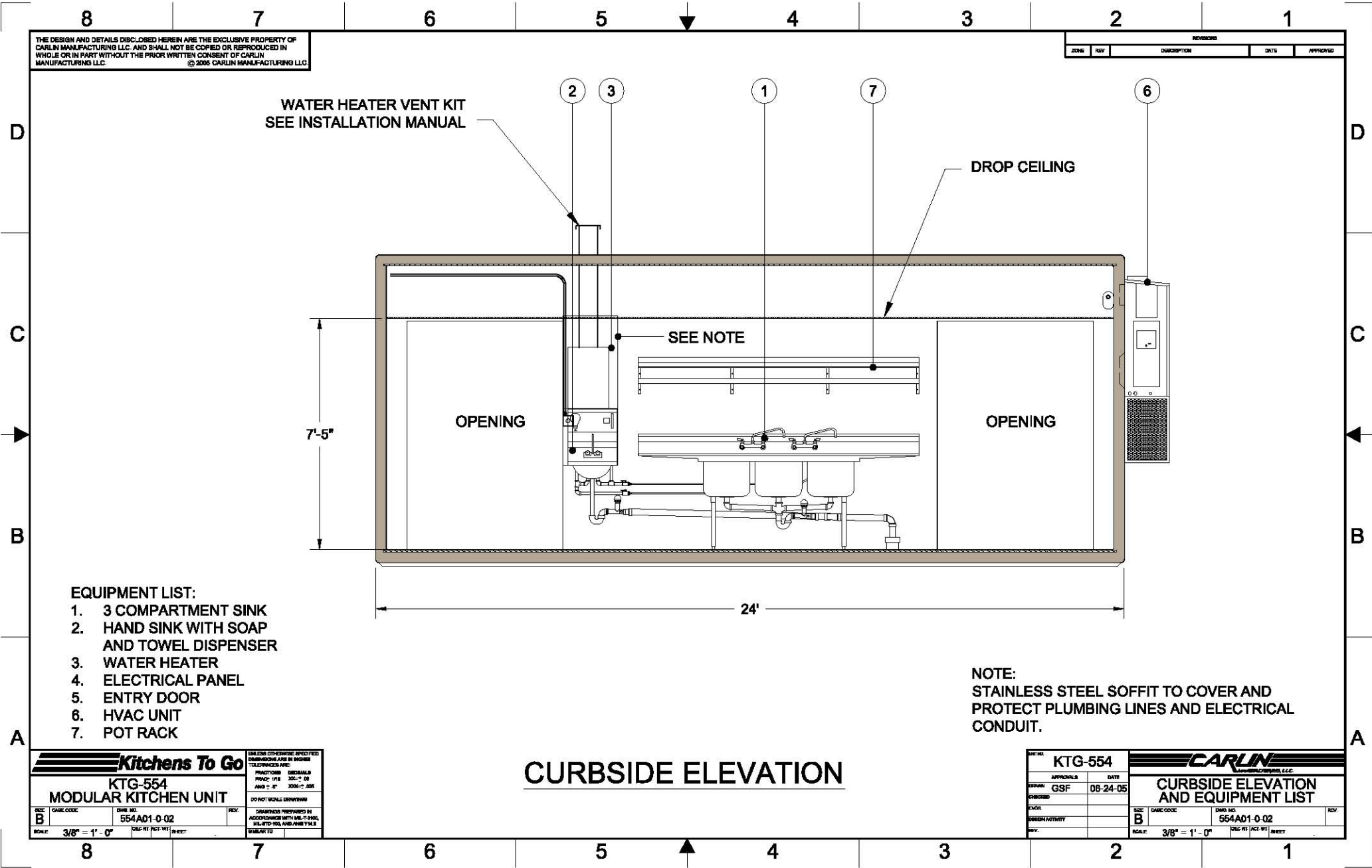


Please note: This drawing shows a typical configuration of equipment and does not necessarily show the equipment currently installed in the unit. Verify the specific equipment currently in the unit with a KTG representative.



THE DESIGN AND DETAILS DISCLOSED HEREIN ARE THE EXCLUSIVE PROPERTY OF CARLIN MANUFACTURING LLC. AND SHALL NOT BE COPIED OR REPRODUCED IN WHOLE OR IN PART WITHOUT THE PRIOR WRITTEN CONSENT OF CARLIN MANUFACTURING LLC. © 2005 CARLIN MANUFACTURING LLC

REVISIONS				
ZONE	REV	DESCRIPTION	DATE	APPROVED

WATER HEATER VENT KIT  
SEE INSTALLATION MANUAL

DROP CEILING

SEE NOTE

OPENING

OPENING

- EQUIPMENT LIST:**
1. 3 COMPARTMENT SINK
  2. HAND SINK WITH SOAP AND TOWEL DISPENSER
  3. WATER HEATER
  4. ELECTRICAL PANEL
  5. ENTRY DOOR
  6. HVAC UNIT
  7. POT RACK

**NOTE:**  
STAINLESS STEEL SOFFIT TO COVER AND PROTECT PLUMBING LINES AND ELECTRICAL CONDUIT.

## CURBSIDE ELEVATION

**Kitchens To Go**

**KTG-554**  
**MODULAR KITCHEN UNIT**

SIZE <b>B</b>	CAGE CODE	DWG. NO. 554AD1-0-02	REV.
SCALE 3/8" = 1' - 0"	DWG. REVISIONS	DRAWINGS PREPARED BY ADDENDUMS WITH MFC-2002, MFC-2003, MFC-2004 AND MFC-2005	

DWG. NO. <b>KTG-554</b>		<b>CARLIN</b> MANUFACTURING, LLC.	
APPROVALS	DATE	<b>CURBSIDE ELEVATION AND EQUIPMENT LIST</b>	
DESIGNER GSF	08-24-05	SIZE <b>B</b>	DWG. NO. 554AD1-0-02
CHECKER		SCALE 3/8" = 1' - 0"	DWG. REVISIONS
DESIGN ACTIVITY		SHEET	
REV.			