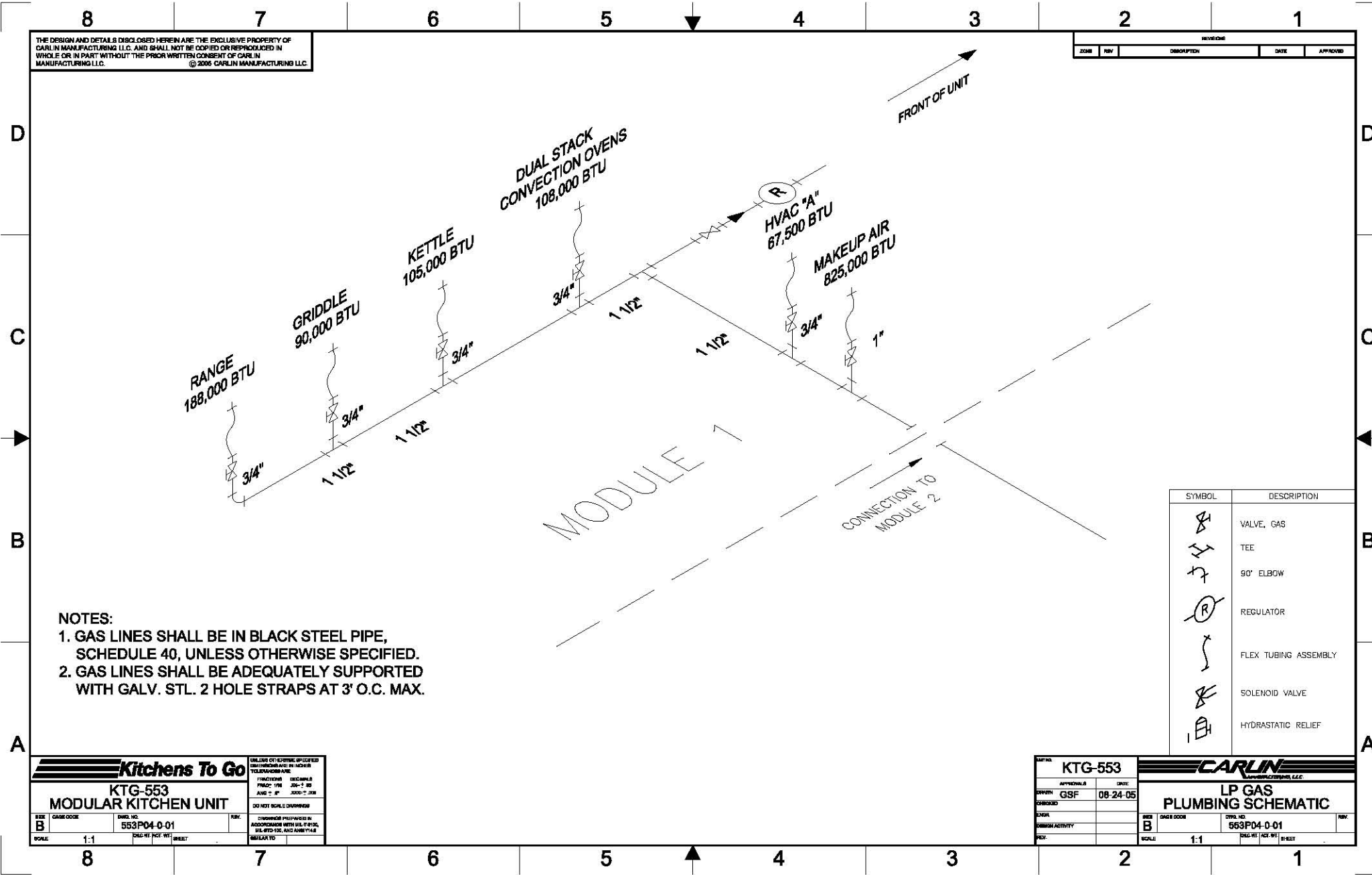


Please note: This drawing shows a typical configuration of equipment and does not necessarily show the equipment currently installed in the unit. Verify the specific equipment currently in the unit with a KTG representative.



THE DESIGN AND DETAILS DISCLOSED HEREIN ARE THE EXCLUSIVE PROPERTY OF CARLIN MANUFACTURING L.L.C. AND SHALL NOT BE COPIED OR REPRODUCED IN WHOLE OR IN PART WITHOUT THE PRIOR WRITTEN CONSENT OF CARLIN MANUFACTURING L.L.C. © 2005 CARLIN MANUFACTURING L.L.C.

REVISIONS			
DATE	REV	DESCRIPTION	APPROVED

- NOTES:**
1. GAS LINES SHALL BE IN BLACK STEEL PIPE, SCHEDULE 40, UNLESS OTHERWISE SPECIFIED.
 2. GAS LINES SHALL BE ADEQUATELY SUPPORTED WITH GALV. STL. 2 HOLE STRAPS AT 3' O.C. MAX.

SYMBOL	DESCRIPTION
	VALVE, GAS
	TEE
	90° ELBOW
	REGULATOR
	FLEX TUBING ASSEMBLY
	SOLENOID VALVE
	HYDRASTATIC RELIEF

Kitchens To Go

KTG-553 MODULAR KITCHEN UNIT

SIZE: B	GAGE CODE: 553P04-0-01	DATE: 08-24-05
SCALE: 1:1	DWG. NO. 553P04-0-01	REV. 1

DO NOT SCALE DIMENSIONS

DESIGNED BY: GSF

DATE: 08-24-05

SCALE: 1:1

CARLIN MANUFACTURING L.L.C.

LP GAS PLUMBING SCHEMATIC

DATE: KTG-553	APPROVALS: GSF	DATE: 08-24-05
SIZE: B	GAGE CODE: 553P04-0-01	REV. 1
SCALE: 1:1	DWG. NO. 553P04-0-01	REV. 1