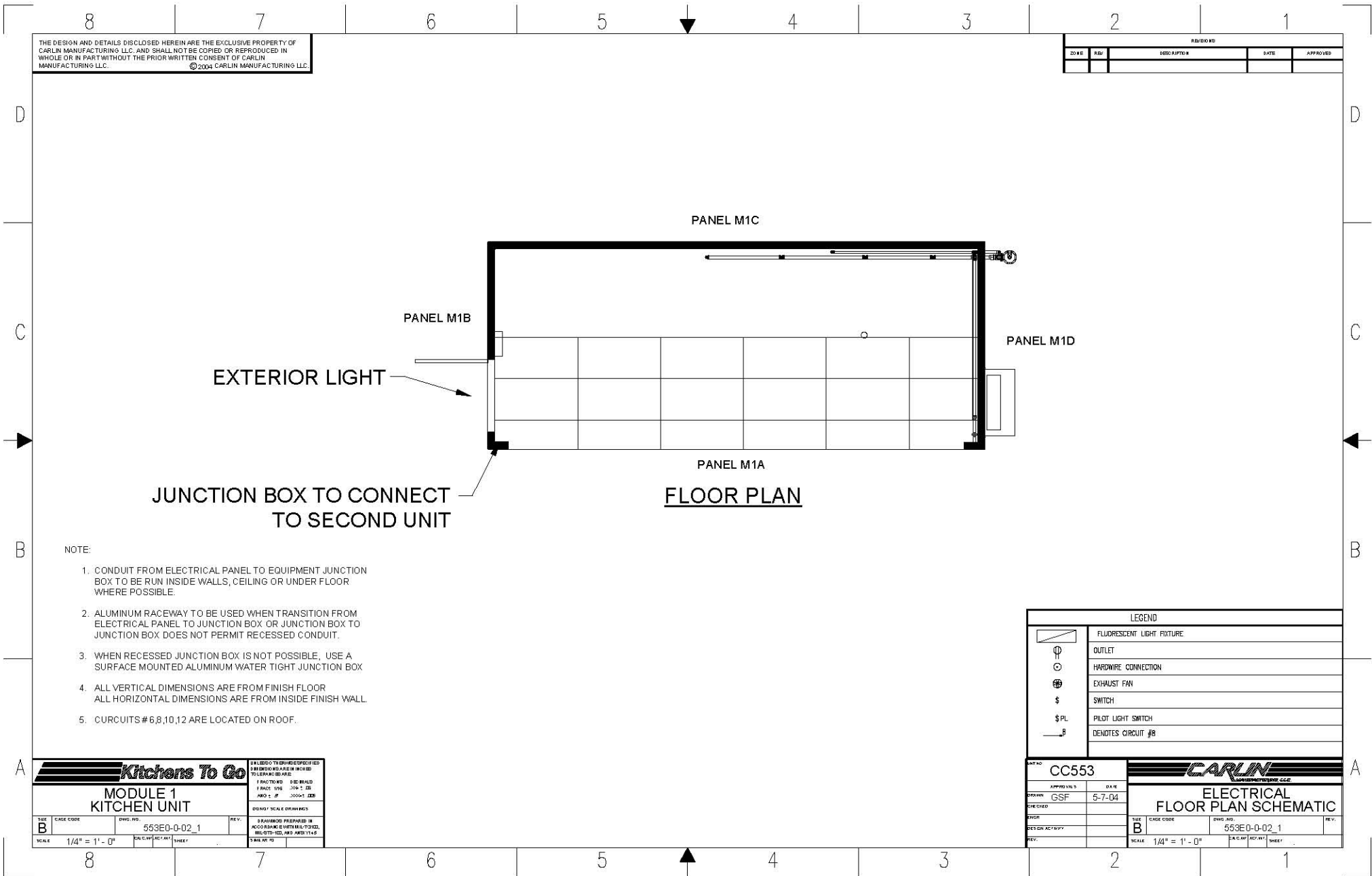


Please note: This drawing shows a typical configuration of equipment and does not necessarily show the equipment currently installed in the unit. Verify the specific equipment currently in the unit with a KTG representative.



THE DESIGN AND DETAILS DISCLOSED HEREIN ARE THE EXCLUSIVE PROPERTY OF CARLIN MANUFACTURING LLC, AND SHALL NOT BE COPIED OR REPRODUCED IN WHOLE OR IN PART WITHOUT THE PRIOR WRITTEN CONSENT OF CARLIN MANUFACTURING LLC. © 2004 CARLIN MANUFACTURING LLC.

REVISIONS				
ZONE	REV	DESCRIPTION	DATE	APPROVED

- NOTE:
1. CONDUIT FROM ELECTRICAL PANEL TO EQUIPMENT JUNCTION BOX TO BE RUN INSIDE WALLS, CEILING OR UNDER FLOOR WHERE POSSIBLE.
 2. ALUMINUM RACEWAY TO BE USED WHEN TRANSITION FROM ELECTRICAL PANEL TO JUNCTION BOX OR JUNCTION BOX TO JUNCTION BOX DOES NOT PERMIT RECESSED CONDUIT.
 3. WHEN RECESSED JUNCTION BOX IS NOT POSSIBLE, USE A SURFACE MOUNTED ALUMINUM WATER TIGHT JUNCTION BOX
 4. ALL VERTICAL DIMENSIONS ARE FROM FINISH FLOOR
ALL HORIZONTAL DIMENSIONS ARE FROM INSIDE FINISH WALL.
 5. CIRCUITS # 6,8,10,12 ARE LOCATED ON ROOF.

LEGEND	
	FLUORESCENT LIGHT FIXTURE
	OUTLET
	HARDWARE CONNECTION
	EXHAUST FAN
	SWITCH
	PILOT LIGHT SWITCH
	DENOTES CIRCUIT #B

Kitchens To Go

MODULE 1 KITCHEN UNIT

SIZE	CAGE CODE	DWG. NO.	REV.
B		553E0-0-02_1	
SCALE	1/4" = 1' - 0"	SHEET	

DATE: 5-7-04
DRAWN: GSF
CHECKED: [blank]
BY: [blank]
DESIGN ACTIVITY: [blank]
REV: [blank]

CARLIN MANUFACTURING LLC

ELECTRICAL FLOOR PLAN SCHEMATIC

UNIT NO.	CC553	DATE	5-7-04
SCALE	1/4" = 1' - 0"	SHEET	