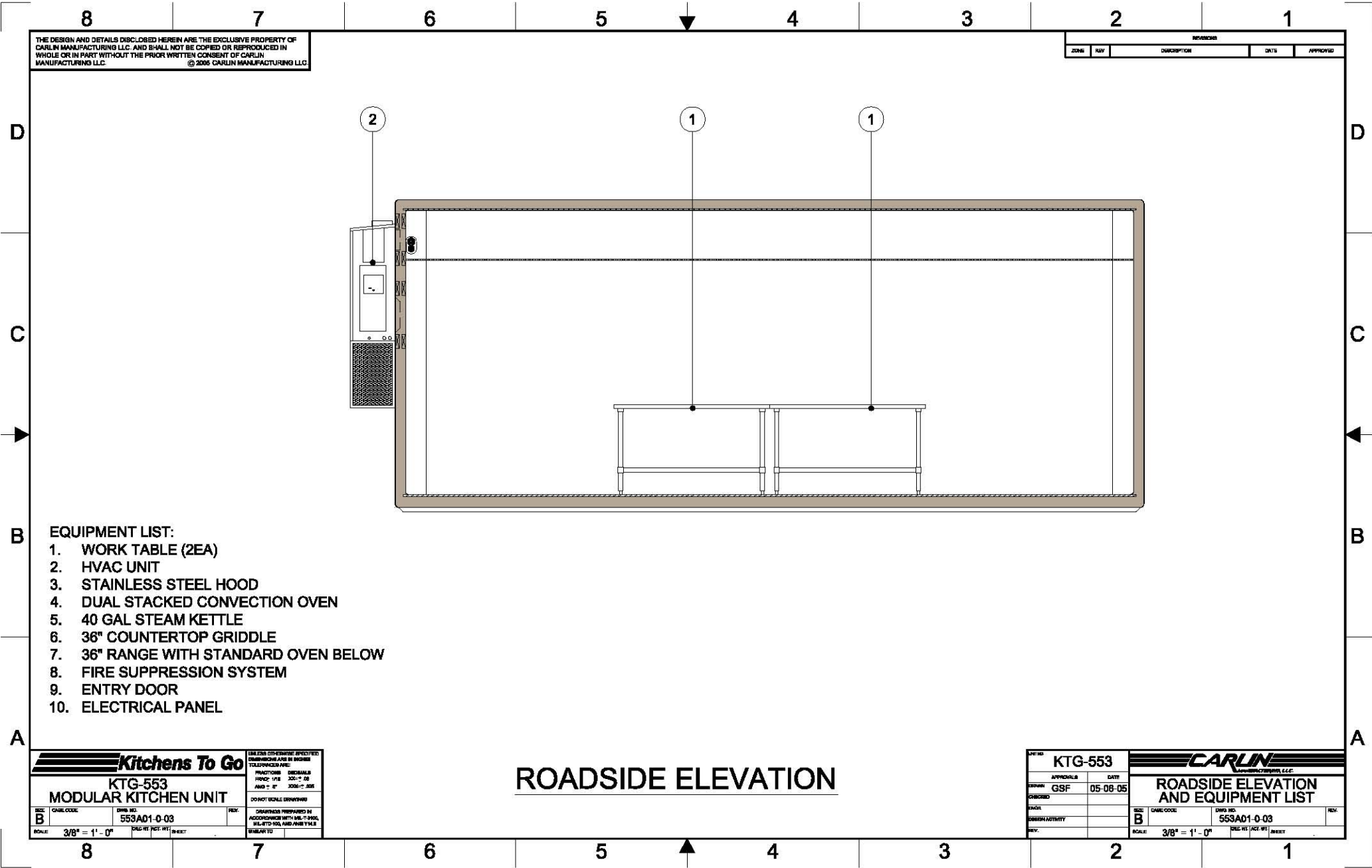


Please note: This drawing shows a typical configuration of equipment and does not necessarily show the equipment currently installed in the unit. Verify the specific equipment currently in the unit with a KTG representative.



THE DESIGN AND DETAILS DISCLOSED HEREIN ARE THE EXCLUSIVE PROPERTY OF CARLIN MANUFACTURING LLC. AND SHALL NOT BE COPIED OR REPRODUCED IN WHOLE OR IN PART WITHOUT THE PRIOR WRITTEN CONSENT OF CARLIN MANUFACTURING LLC. © 2005 CARLIN MANUFACTURING LLC

REVISIONS				
ZONE	REV	DESCRIPTION	DATE	APPROVED

EQUIPMENT LIST:

1. WORK TABLE (2EA)
2. HVAC UNIT
3. STAINLESS STEEL HOOD
4. DUAL STACKED CONVECTION OVEN
5. 40 GAL STEAM KETTLE
6. 36" COUNTERTOP GRIDDLE
7. 36" RANGE WITH STANDARD OVEN BELOW
8. FIRE SUPPRESSION SYSTEM
9. ENTRY DOOR
10. ELECTRICAL PANEL

ROADSIDE ELEVATION

Kitchens To Go
KTG-553
MODULAR KITCHEN UNIT

SCALE: 3/8" = 1' - 0"

DATE: 05-08-05

BY: GSF

CARLIN
 MANUFACTURING LLC

ROADSIDE ELEVATION AND EQUIPMENT LIST

UNIT NO: KTG-553

APPROVALS: GSF DATE: 05-08-05

SCALE: 3/8" = 1' - 0"