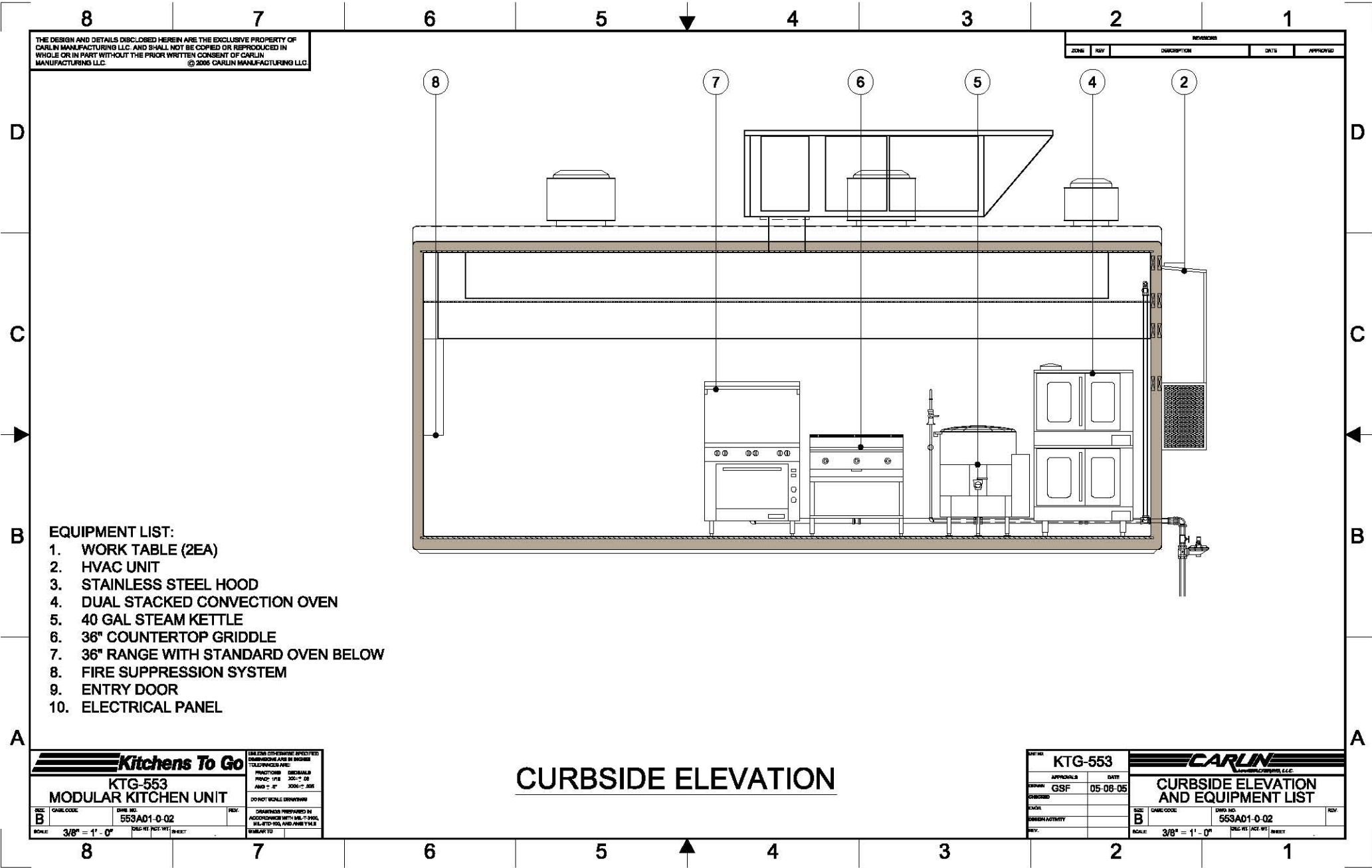


Please note: This drawing shows a typical configuration of equipment and does not necessarily show the equipment currently installed in the unit. Verify the specific equipment currently in the unit with a KTG representative.



- EQUIPMENT LIST:**
1. WORK TABLE (2EA)
 2. HVAC UNIT
 3. STAINLESS STEEL HOOD
 4. DUAL STACKED CONVECTION OVEN
 5. 40 GAL STEAM KETTLE
 6. 36" COUNTERTOP GRIDDLE
 7. 36" RANGE WITH STANDARD OVEN BELOW
 8. FIRE SUPPRESSION SYSTEM
 9. ENTRY DOOR
 10. ELECTRICAL PANEL

CURBSIDE ELEVATION

Kitchens To Go

KTG-553
MODULAR KITCHEN UNIT

SIZE: **B**
SCALE: 3/8" = 1' - 0"

DATE CODE: 553AD1-0-02

REV: []

DESIGNED BY: []
CHECKED BY: []
DATE: []

DO NOT SCALE DRAWINGS

DRAWINGS PREPARED IN ACCORDANCE WITH MIL-C-2600, MIL-STD-883C AND ANSI Y14.5

KTG-553

APPROVALS: [] DATE: 05-08-05

DESIGN: GSF

ENGINEER: []

SCALE: 3/8" = 1' - 0"

CARLIN
LAWRENCEVILLE, GA, U.S.A.

CURBSIDE ELEVATION AND EQUIPMENT LIST

SIZE: **B** DATE CODE: 553AD1-0-02

SCALE: 3/8" = 1' - 0"