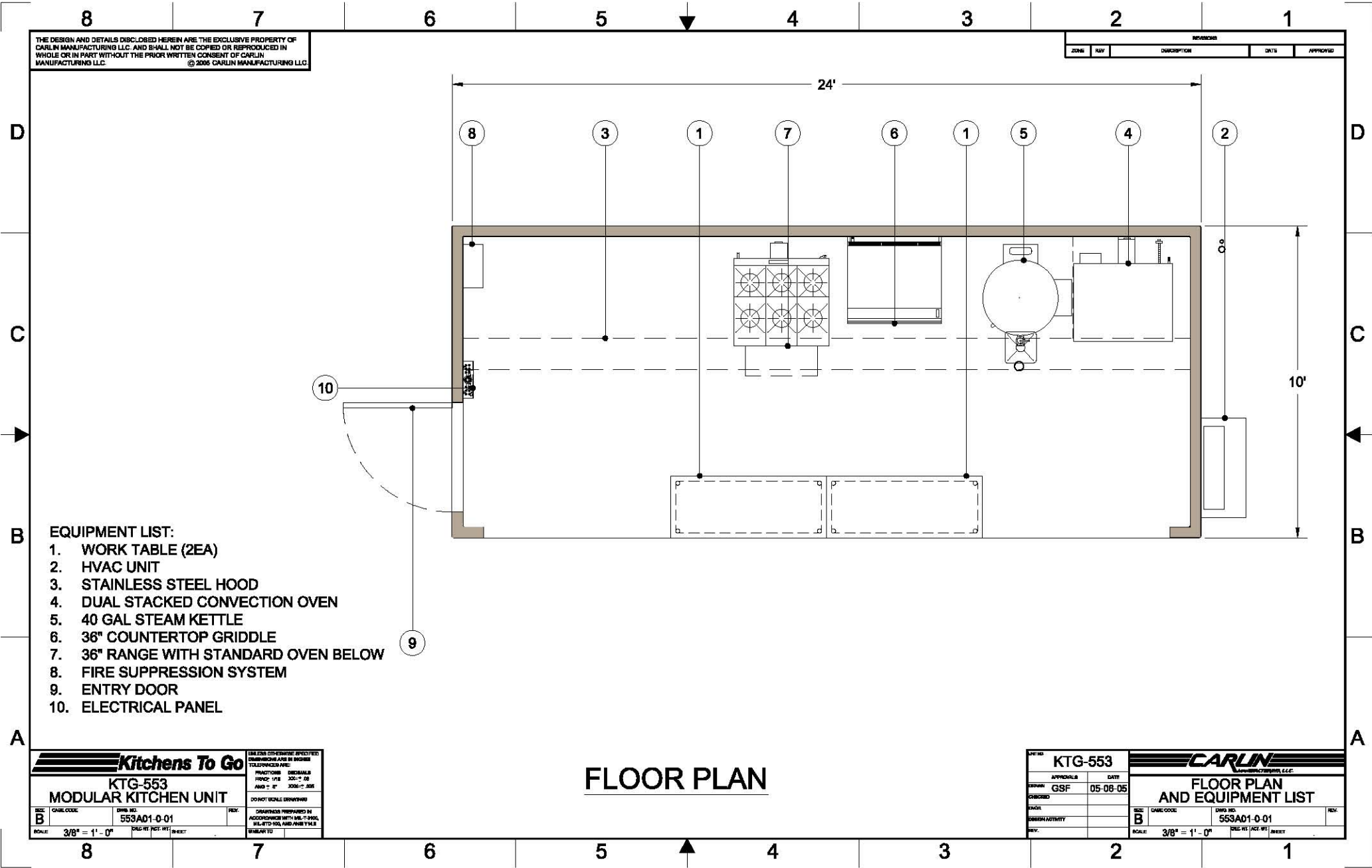


Please note: This drawing shows a typical configuration of equipment and does not necessarily show the equipment currently installed in the unit. Verify the specific equipment currently in the unit with a KTG representative.



THE DESIGN AND DETAILS DISCLOSED HEREIN ARE THE EXCLUSIVE PROPERTY OF CARLIN MANUFACTURING LLC. AND SHALL NOT BE COPIED OR REPRODUCED IN WHOLE OR IN PART WITHOUT THE PRIOR WRITTEN CONSENT OF CARLIN MANUFACTURING LLC. © 2005 CARLIN MANUFACTURING LLC

REVISIONS				
ZONE	REV	DESCRIPTION	DATE	APPROVED

EQUIPMENT LIST:

- 1. WORK TABLE (2EA)
- 2. HVAC UNIT
- 3. STAINLESS STEEL HOOD
- 4. DUAL STACKED CONVECTION OVEN
- 5. 40 GAL STEAM KETTLE
- 6. 36" COUNTERTOP GRIDDLE
- 7. 36" RANGE WITH STANDARD OVEN BELOW
- 8. FIRE SUPPRESSION SYSTEM
- 9. ENTRY DOOR
- 10. ELECTRICAL PANEL

FLOOR PLAN

Kitchens To Go

KTG-553
MODULAR KITCHEN UNIT

SIZE B	CAGE CODE	DWG. NO. 553AD1-0-01	REV.
SCALE 3/8" = 1' - 0"	DWG. REVISION	DATE	SHEET

DESIGNED AND DRAWN BY: [Name]
CHECKED BY: [Name]
DATE: 05-08-05

KTG-553

APPROVALS	DATE
DESIGN: GSF	05-08-05

CARLIN
MANUFACTURING LLC.

FLOOR PLAN AND EQUIPMENT LIST

SIZE B	CAGE CODE	DWG. NO. 553AD1-0-01	REV.
SCALE 3/8" = 1' - 0"	DWG. REVISION	DATE	SHEET