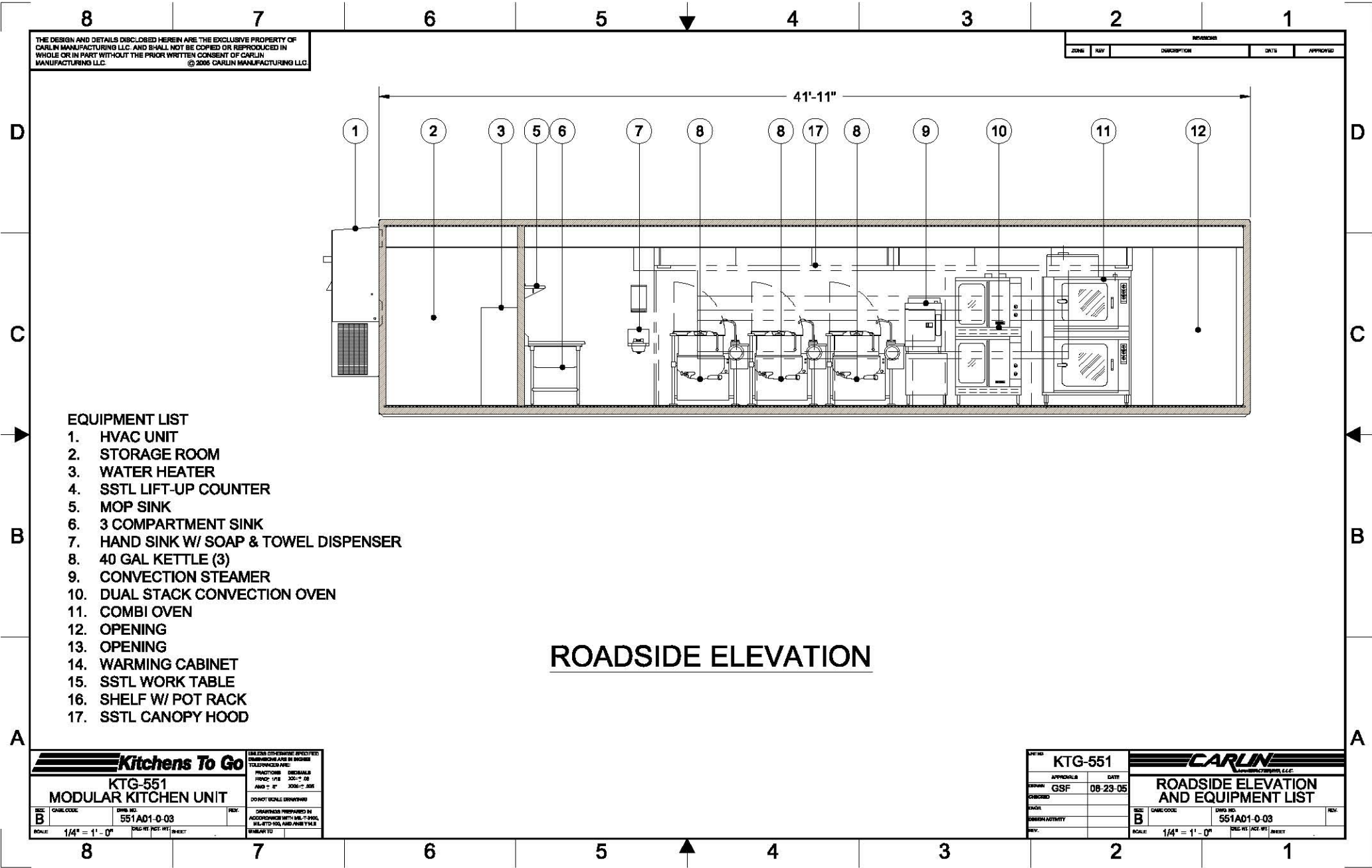


Please note: This drawing shows a typical configuration of equipment and does not necessarily show the equipment currently installed in the unit. Verify the specific equipment currently in the unit with a KTG representative.



THE DESIGN AND DETAILS DISCLOSED HEREIN ARE THE EXCLUSIVE PROPERTY OF CARLIN MANUFACTURING LLC. AND SHALL NOT BE COPIED OR REPRODUCED IN WHOLE OR IN PART WITHOUT THE PRIOR WRITTEN CONSENT OF CARLIN MANUFACTURING LLC. © 2005 CARLIN MANUFACTURING LLC

REVISIONS				
ZONE	REV	DESCRIPTION	DATE	APPROVED

41'-11"

EQUIPMENT LIST

- 1. HVAC UNIT
- 2. STORAGE ROOM
- 3. WATER HEATER
- 4. SSTL LIFT-UP COUNTER
- 5. MOP SINK
- 6. 3 COMPARTMENT SINK
- 7. HAND SINK W/ SOAP & TOWEL DISPENSER
- 8. 40 GAL KETTLE (3)
- 9. CONVECTION STEAMER
- 10. DUAL STACK CONVECTION OVEN
- 11. COMBI OVEN
- 12. OPENING
- 13. OPENING
- 14. WARMING CABINET
- 15. SSTL WORK TABLE
- 16. SHELF W/ POT RACK
- 17. SSTL CANOPY HOOD

ROADSIDE ELEVATION

Kitchens To Go

KTG-551
MODULAR KITCHEN UNIT

SIZE: B	CAGE CODE	DWG. NO.: 551AD1-0-03	REV.
SCALE: 1/4" = 1' - 0"	DWG. RE. (ACT. WT.)	SHEET	

DESIGNER: PREPARED BY ADDENDUMS WITH SMC-2002, SMC-2003, SMC-2004 AND SMC-2005
SHEET NO.

KTG-551

APPROVALS	DATE
DESIGN: GSF	08-23-05
CHECKED	
DRAWN	
DESIGN ACTIVITY	
REV.	

CARLIN
MANUFACTURING LLC

ROADSIDE ELEVATION AND EQUIPMENT LIST

SIZE: B	CAGE CODE	DWG. NO.: 551AD1-0-03	REV.
SCALE: 1/4" = 1' - 0"	DWG. RE. (ACT. WT.)	SHEET	