

6

5

4

3

2

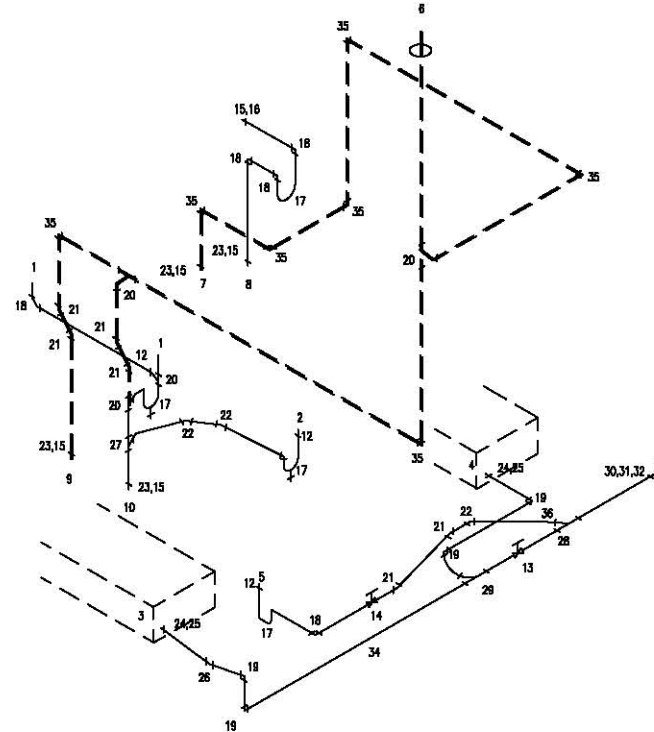
1

ZONE	REV	REVISIONS	DATE	APPROVED

NOTES:

1. ALL LINES AND FITTINGS SHALL BE ABS MATERIAL UNLESS OTHERWISE SPECIFIED.
2. ALL LINES SHALL BE PROPERLY SUPPORTED AND SECURED IN ACCORDANCE TO UPC.
3. TEST LINES FOR LEAKS AFTER FINAL INSTALLATIONS.
4. ALL LINES SHALL BE WINTERIZED (HEAT TAPED WITH RUBATEX INSULATION) AND NOT THE HOULING TANKS.

ITEM	DESCRIPTION	QTY.	PART NO.
1.	2-COMP SINK DRAIN	2	-
2.	HAND SINK DRAIN	1	-
3.	GRAY WATER TANK, SERVICE SIDE DRAIN LINE	1	-
4.	GRAY WATER TANK, COOKING SIDE DRAIN LINE	1	-
5.	FLOOR TROUGH DRAIN LINE	1	-
6.	VENT LINE, TERMINATION, HIGHEST PT.	1	-
7.	GRAY WATER TANK, COOKING SIDE VENT LINE	1	-
8.	GRAY WATER TANK, COOKING SIDE INLET	1	-
9.	GRAY WATER TANK, SERVICE SIDE VENT LINE	1	-
10.	GRAY WATER TANK, SERVICE SIDE INLET	1	-
11.	DUMP LINE, 3"	1	-
12.	P-TRAP MALE ADAPTER, 1 1/2"	3	140004
13.	DUMP VALVE, 2"	1	140071
14.	DUMP VALVE, 1 1/2"	1	100068
15.	ADAPTER, MALE 1 1/2"	5	140056
16.	QUICK-CONNECT COUPLER, BRASS 1 1/2", GREASE TRAP	1	180001C
17.	P-TRAP, 1 1/2" WITH DRAIN	4	140014
18.	ELBOW, 1 1/2" 90°	9	140010
19.	ELBOW, 2" 90°	5	140021
20.	TEE SANITARY, 1 1/2"	4	140012
21.	ELBOW, 1 1/2" 22°	6	140044
22.	ELBOW, 1 1/2" 45°	3	140007
23.	COUPLING NO-HUB BAND, 1 1/2"	4	140002
24.	COUPLING NO-HUB BAND, 2"	2	140016
25.	ADAPTER, 2" MALE	2	140018
26.	ELBOW, 2" 45°	1	140020
27.	WYE, 1 1/2"	1	140048
28.	WYE, 2"	1	140028
29.	TEE-WYE, 2" LONG TURN	1	000578
30.	CAP, 3" TERMINATION	1	140079
31.	ADAPTER, 3" HUB X BAYONET	1	140081
32.	REDUCER, 3" X 2" SPIGOT	1	140006A
33.	PIPE, 1 1/2" ABS	-	140036
34.	PIPE, 2" ABS	-	140037
35.	ELBOW, VENT 1 1/2" 90°	7	140080
36.	REDUCER BUSHING, 2" X 1 1/2"	1	140005



Please note: This drawing shows a typical configuration of equipment and does not necessarily show the equipment currently installed in the unit. Verify the specific equipment currently in the unit with a KTG representative.

UNLESS OTHERWISE SPECIFIED DIMENSIONS ARE IN INCHES TOLERANCES		CONTRACT NO.	
DECIMALS	FRACTIONS	CUSTOMER	JOB NO.
3/16 ± .01	FRAC ± 1/16	US ARMY	551
1/32 ± .005	ANG ± .3°	USER	DATE
1/64 ± .005	ANG ± .3°	ROB.J	8/21/92
DRAUGHTSMAN PREPARED IN ACCORDANCE WITH ISO-9001-1987, ANSI Y14.5		SCALE	PART NO.
CHECK ALL SHARP EDGES .08 MIN.		C	5510006
FINISH		REV.	0
DO NOT SCALE DRAWINGS		CK-1E US ARMY WASTE LINE DIAGRAM	
DATE	USED ON	THE DESIGN AND DETAILS DISCLOSED HEREIN ARE THE EXCLUSIVE PROPERTY OF CARLIN MANUFACTURING INC. AND SHALL NOT BE COPIED OR REPRODUCED IN WHOLE OR IN PART WITHOUT THE PRIOR WRITTEN CONSENT OF CARLIN MANUFACTURING INC. © CARLIN MANUFACTURING INC.	
APPROVED	BY	NONE	

6

5

4

3

2

1