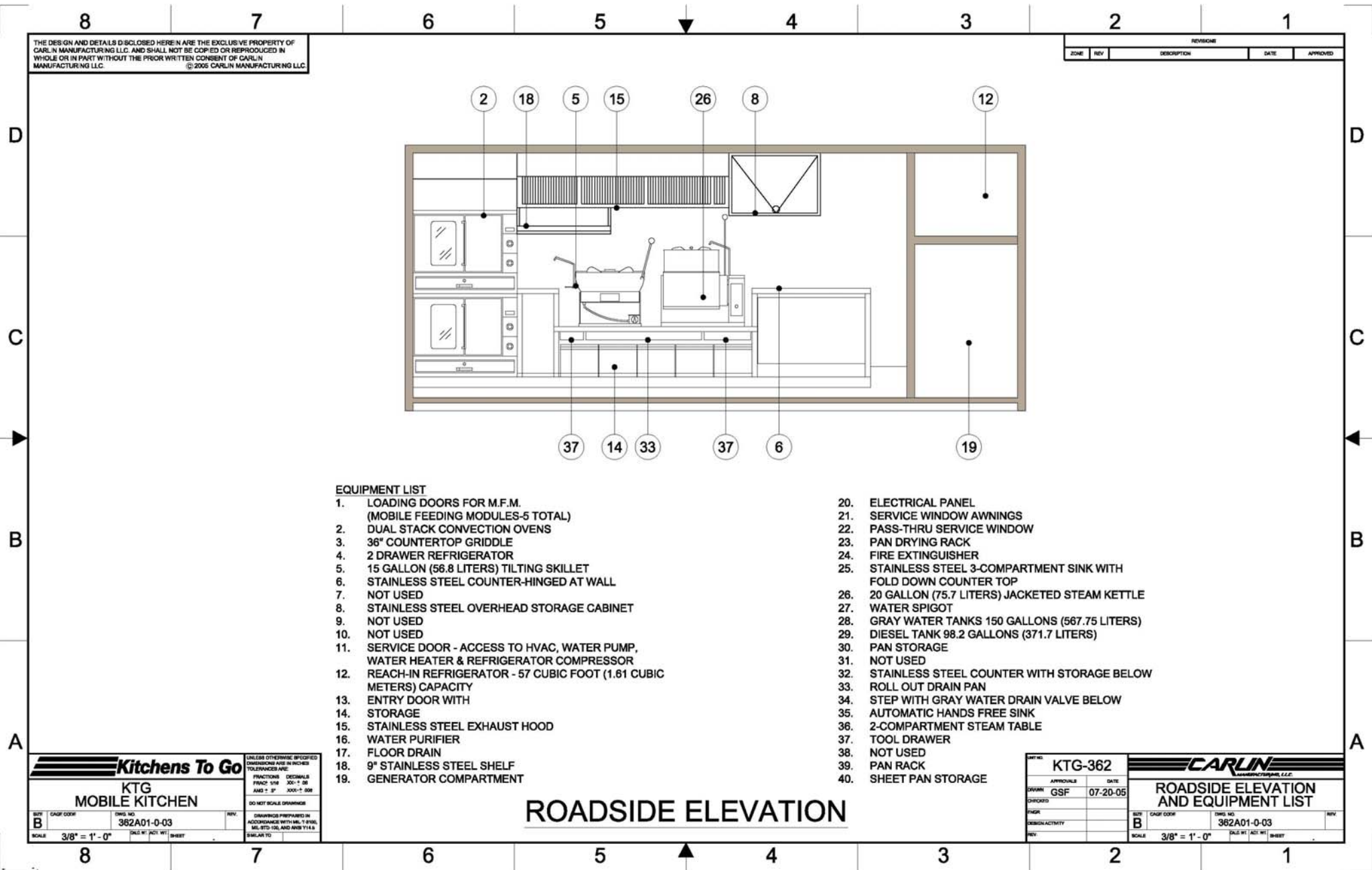


Please note: This drawing shows a typical configuration of equipment and does not necessarily show the equipment currently installed in the unit. Verify the specific equipment currently in the unit with a KTG representative.



THE DESIGN AND DETAILS DISCLOSED HEREIN ARE THE EXCLUSIVE PROPERTY OF CARLIN MANUFACTURING LLC. AND SHALL NOT BE COPIED OR REPRODUCED IN WHOLE OR IN PART WITHOUT THE PRIOR WRITTEN CONSENT OF CARLIN MANUFACTURING LLC. © 2006 CARLIN MANUFACTURING LLC.

REVISIONS				
ZONE	REV	DESCRIPTION	DATE	APPROVED

**EQUIPMENT LIST**

- |  |  |
|--|--|
| <ul style="list-style-type: none"> <li>1. LOADING DOORS FOR M.F.M. (MOBILE FEEDING MODULES-5 TOTAL)</li> <li>2. DUAL STACK CONVECTION OVENS</li> <li>3. 36" COUNTERTOP GRIDDLE</li> <li>4. 2 DRAWER REFRIGERATOR</li> <li>5. 15 GALLON (56.8 LITERS) TILTING SKILLET</li> <li>6. STAINLESS STEEL COUNTER-HINGED AT WALL</li> <li>7. NOT USED</li> <li>8. STAINLESS STEEL OVERHEAD STORAGE CABINET</li> <li>9. NOT USED</li> <li>10. NOT USED</li> <li>11. SERVICE DOOR - ACCESS TO HVAC, WATER PUMP, WATER HEATER &amp; REFRIGERATOR COMPRESSOR</li> <li>12. REACH-IN REFRIGERATOR - 57 CUBIC FOOT (1.61 CUBIC METERS) CAPACITY</li> <li>13. ENTRY DOOR WITH</li> <li>14. STORAGE</li> <li>15. STAINLESS STEEL EXHAUST HOOD</li> <li>16. WATER PURIFIER</li> <li>17. FLOOR DRAIN</li> <li>18. 9" STAINLESS STEEL SHELF</li> <li>19. GENERATOR COMPARTMENT</li> </ul> | <ul style="list-style-type: none"> <li>20. ELECTRICAL PANEL</li> <li>21. SERVICE WINDOW AWNINGS</li> <li>22. PASS-THRU SERVICE WINDOW</li> <li>23. PAN DRYING RACK</li> <li>24. FIRE EXTINGUISHER</li> <li>25. STAINLESS STEEL 3-COMPARTMENT SINK WITH FOLD DOWN COUNTER TOP</li> <li>26. 20 GALLON (75.7 LITERS) JACKETED STEAM KETTLE</li> <li>27. WATER SPIGOT</li> <li>28. GRAY WATER TANKS 150 GALLONS (567.75 LITERS)</li> <li>29. DIESEL TANK 98.2 GALLONS (371.7 LITERS)</li> <li>30. PAN STORAGE</li> <li>31. NOT USED</li> <li>32. STAINLESS STEEL COUNTER WITH STORAGE BELOW</li> <li>33. ROLL OUT DRAIN PAN</li> <li>34. STEP WITH GRAY WATER DRAIN VALVE BELOW</li> <li>35. AUTOMATIC HANDS FREE SINK</li> <li>36. 2-COMPARTMENT STEAM TABLE</li> <li>37. TOOL DRAWER</li> <li>38. NOT USED</li> <li>39. PAN RACK</li> <li>40. SHEET PAN STORAGE</li> </ul> |
|--|--|

**ROADSIDE ELEVATION**

<b>Kitchens To Go</b>		UNLESS OTHERWISE SPECIFIED DIMENSIONS ARE IN INCHES TOLERANCES ARE:	
KTG MOBILE KITCHEN		FRACTIONS: 1/8" 3/16" 1/4" 3/8" 1/2"	DECIMALS: .00" - .01" .01" - .02" .02" - .03" .03" - .04"
REV: B	DATE: 07-20-05	DRAWINGS PREPARED IN ACCORDANCE WITH MIL-STD-883C, MIL-STD-1316 AND ANSI Y14.5	
SCALE: 3/8" = 1'-0"	SHEET: 1	SHEET: 1	

KTG-362		<b>CARLIN</b> MANUFACTURING LLC	
APPROVALS: GSF	DATE: 07-20-05	ROADSIDE ELEVATION AND EQUIPMENT LIST	
DESIGN: GSF	DATE: 07-20-05	REV: B	DATE: 07-20-05
SCALE: 3/8" = 1'-0"	SHEET: 1	SHEET: 1	