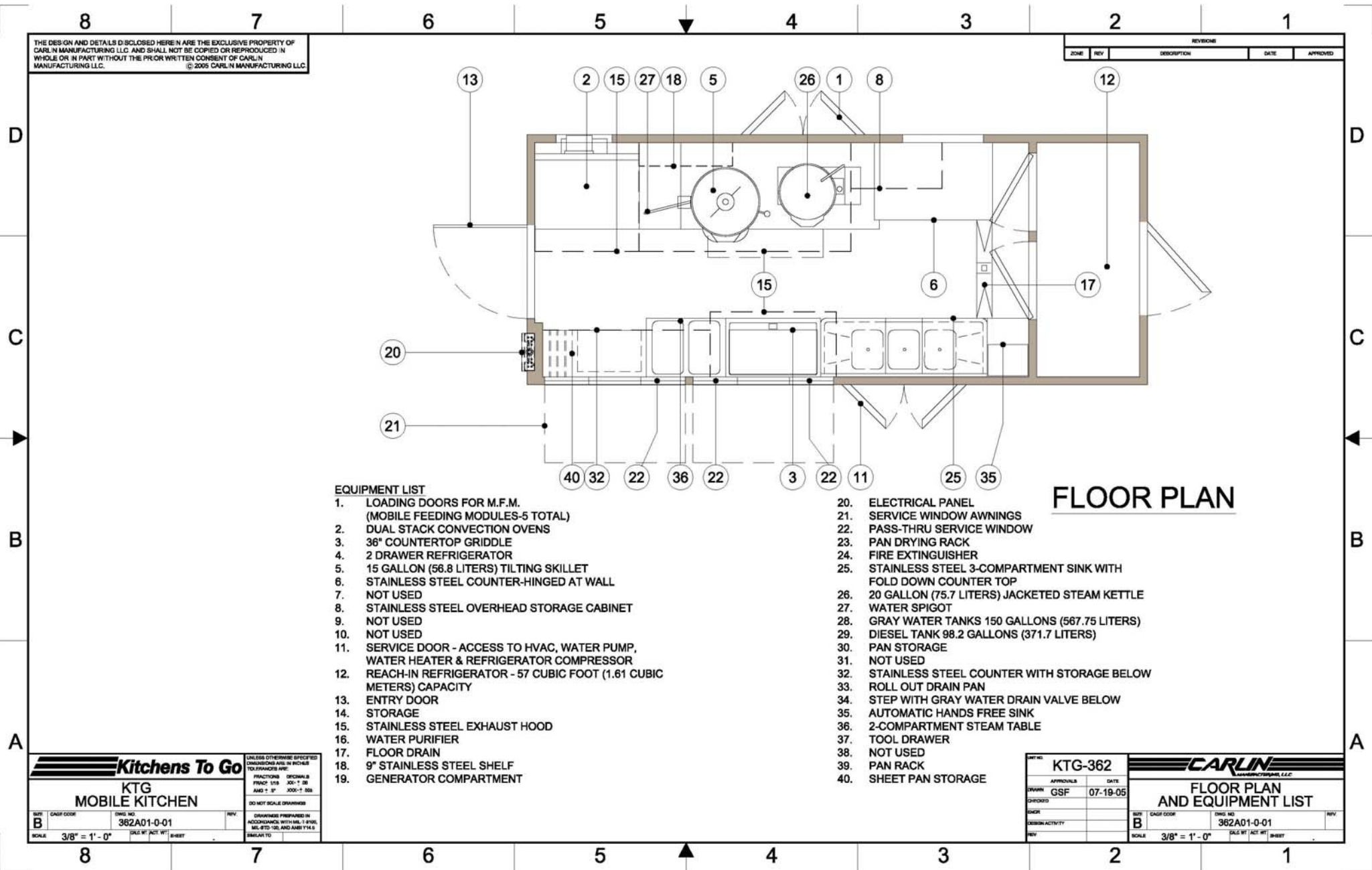


Please note: This drawing shows a typical configuration of equipment and does not necessarily show the equipment currently installed in the unit. Verify the specific equipment currently in the unit with a KTG representative.



FLOOR PLAN

EQUIPMENT LIST

- | | |
|---|--|
| <ol style="list-style-type: none"> 1. LOADING DOORS FOR M.F.M. (MOBILE FEEDING MODULES-5 TOTAL) 2. DUAL STACK CONVECTION OVENS 3. 36" COUNTERTOP GRIDDLE 4. 2 DRAWER REFRIGERATOR 5. 15 GALLON (56.8 LITERS) TILTING SKILLET 6. STAINLESS STEEL COUNTER-HINGED AT WALL 7. NOT USED 8. STAINLESS STEEL OVERHEAD STORAGE CABINET 9. NOT USED 10. NOT USED 11. SERVICE DOOR - ACCESS TO HVAC, WATER PUMP, WATER HEATER & REFRIGERATOR COMPRESSOR 12. REACH-IN REFRIGERATOR - 57 CUBIC FOOT (1.61 CUBIC METERS) CAPACITY 13. ENTRY DOOR 14. STORAGE 15. STAINLESS STEEL EXHAUST HOOD 16. WATER PURIFIER 17. FLOOR DRAIN 18. 9" STAINLESS STEEL SHELF 19. GENERATOR COMPARTMENT | <ol style="list-style-type: none"> 20. ELECTRICAL PANEL 21. SERVICE WINDOW AWNINGS 22. PASS-THRU SERVICE WINDOW 23. PAN DRYING RACK 24. FIRE EXTINGUISHER 25. STAINLESS STEEL 3-COMPARTMENT SINK WITH FOLD DOWN COUNTER TOP 26. 20 GALLON (75.7 LITERS) JACKETED STEAM KETTLE 27. WATER SPIGOT 28. GRAY WATER TANKS 150 GALLONS (567.75 LITERS) 29. DIESEL TANK 98.2 GALLONS (371.7 LITERS) 30. PAN STORAGE 31. NOT USED 32. STAINLESS STEEL COUNTER WITH STORAGE BELOW 33. ROLL OUT DRAIN PAN 34. STEP WITH GRAY WATER DRAIN VALVE BELOW 35. AUTOMATIC HANDS FREE SINK 36. 2-COMPARTMENT STEAM TABLE 37. TOOL DRAWER 38. NOT USED 39. PAN RACK 40. SHEET PAN STORAGE |
|---|--|

THE DESIGN AND DETAILS DISCLOSED HEREIN ARE THE EXCLUSIVE PROPERTY OF CARLIN MANUFACTURING LLC. AND SHALL NOT BE COPIED OR REPRODUCED IN WHOLE OR IN PART WITHOUT THE PRIOR WRITTEN CONSENT OF CARLIN MANUFACTURING LLC. © 2005 CARLIN MANUFACTURING LLC.

REVISED		DESCRIPTION	DATE	APPROVED
ZONE	REV			

Kitchens To Go

KTG MOBILE KITCHEN

UNLESS OTHERWISE SPECIFIED DIMENSIONS ARE IN INCHES TO NEAREST 1/8"

FRACTIONS DECIMALS
 1/8" = .125 1/4" = .250
 3/8" = .375 1/2" = .500
 5/8" = .625 3/4" = .750
 7/8" = .875 1" = 1.000

DO NOT SCALE DRAWINGS

DRAWINGS PREPARED IN ACCORDANCE WITH MIL-1-1500, MIL-STD-100 AND ANSI Y14.5

DATE: 07-19-05
 DRAWN: GSF
 CHECKED: []
 INCH: []
 MINOR ACTIVITY: []
 REV: []

SCALE: 3/8" = 1'-0"

CARLIN MANUFACTURING LLC

FLOOR PLAN AND EQUIPMENT LIST

DATE: 07-19-05
 DRAWN: GSF
 CHECKED: []
 INCH: []
 MINOR ACTIVITY: []
 REV: []

DATE: 07-19-05
 DRAWN: GSF
 CHECKED: []
 INCH: []
 MINOR ACTIVITY: []
 REV: []

SCALE: 3/8" = 1'-0"