

THE DESIGN AND DETAILS DISCLOSED HEREIN ARE THE EXCLUSIVE PROPERTY OF CARLIN MANUFACTURING LLC. AND SHALL NOT BE COPIED OR REPRODUCED IN WHOLE OR IN PART WITHOUT THE PRIOR WRITTEN CONSENT OF CARLIN MANUFACTURING LLC. © 2006 CARLIN MANUFACTURING LLC.

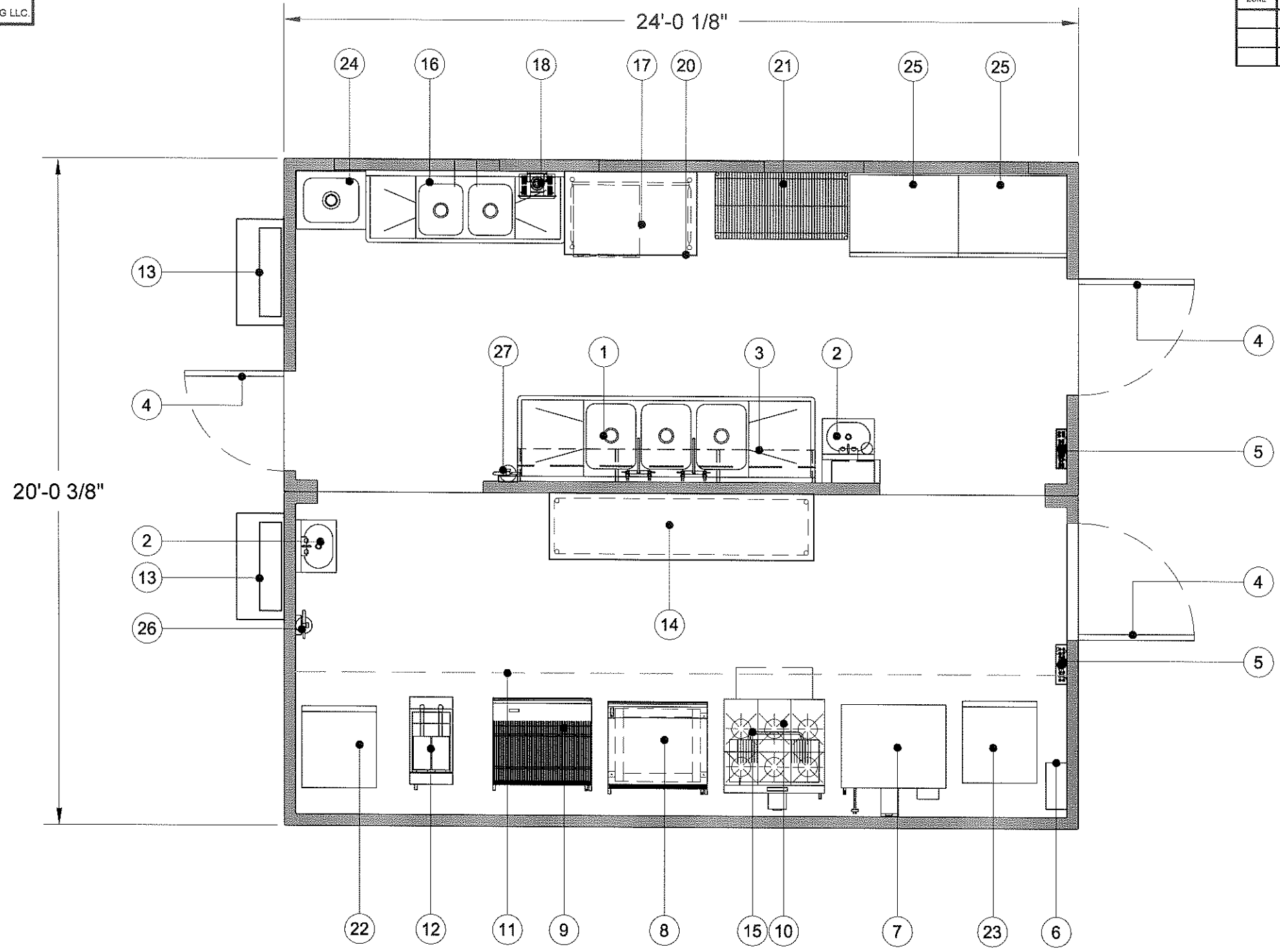
| REVISIONS | | | | |
|-----------|-----|---------------------------|----------|----------|
| ZONE | REV | DESCRIPTION | DATE | APPROVED |
| | A | MODIFIED TABLE | 10-26-06 | |
| | B | ADDED SHUT-OFF CIRC. | 10-31-06 | |
| | C | CHG ELEC. FROM 3PH TO 1PH | 11-13-06 | |

EQUIPMENT LIST:

1. 3-COMPARTMENT SINK
2. HAND SINK W/ SOAP & TOWEL DISPENSER
3. POT RACK
4. ENTRY DOOR
5. ELECTRICAL PANEL
6. FIRE SUPPRESSION SYSTEM
7. DUAL STACK CONVECTION OVEN
8. 36" GRIDDLE W/ STAND
9. 36" CHAR BROILER W/ STAND
10. 36" 6-BURNER RANGE W/ STD. OVEN BELOW
11. SSSL EXHAUST HOOD
12. FRYER
13. HVAC UNIT
14. 8' SSSL WORK TABLE
15. SALAMANDER
16. 2-COMPARTMENT SINK
17. UNDER COUNTER DISHWASHER
18. WATER HEATER (ON DEMAND)
19. NOT USED
20. 30" X 48" SSSL WORK TABLE
21. 24" X 48" SHELVEING
22. 1-DOOR REACH-IN FREEZER (PROVIDED BY CLIENT)
23. 1-DOOR REACH-IN REFRIGERATOR (PROVIDED BY CLIENT)
24. MOP SINK
25. 2-DOOR REACH-IN REFRIGERATOR (PROVIDED BY CLIENT)
26. FIRE EXTINGUISHER TYPE "K"
27. FIRE EXTINGUISHER TYPE ABC

FINISH SCHEDULE

FLOOR: POURED FIBER RESIN THAT CONTINUES UP TO THE WALL FOUR INCHES WITH A 3/8" INCH RADIUS COVE AS A INTEGRAL UNIT
CEILING: FIBERGLASS REINFORCED PLASTIC (FRP)
WALLS: FIBERGLASS REINFORCED PLASTIC (FRP)
STAINLESS STEEL 18 GA, TYPE 304, FINISH #4, HORIZONTAL GRAIN BEHIND COOKING LINE
COUNTER: STAINLESS STEEL 16 GA, TYPE 304, FINISH #4, HORIZONTAL GRAIN
SHELVEING: STAINLESS STEEL 16 GA, TYPE 304, FISISH #4, HORIZONTAL GRAIN
EQUIPMENT: MOUNTED LOOSE, SECURE FOR TRANSPORT.
INSTALLATION: ANY GAP LESS THAN 3/8" WIDE TO BE SEALED WITH A SMOOTH SEMI-PERMANENT APPROVED FOOD GRADE CAULK JOINT. ANY GAP LARGER THAN 3/8" REQUIRES THE USE OF A CAULK BACK MATERIAL. ALL SHARP EDGES TO BE SMOOTHED USE 3/16 RIVETS ON ALL STAINLESS RIVETING ALL VENTS MUST HAVE SCREENS



FLOOR PLAN

| | | | |
|---|-----------|---|--------------------|
| Kitchens To Go | | UNLESS OTHERWISE SPECIFIED DIMENSIONS ARE IN INCHES TOLERANCES ARE: | |
| SAINT ANDREWS CLUB MODULAR KITCHEN UNIT | | FRACTIONS 1/16 | DECIMALS .XX ± .06 |
| | | ANG ± .5° | XXX ± .006 |
| DO NOT SCALE DRAWINGS | | | |
| SIZE | CAGE CODE | DWG. NO. | REV. |
| B | | 116A01-0-01 | 2 |
| SCALE CUSTOM | | CALC. WT. ACT. WT. | SHEET |
| | | SIMILAR TO | |

| | | | |
|-----------------|----------|-------------------------------------|-------------|
| UNIT NO. 06-116 | | CARLIN MANUFACTURING LLC. | |
| APPROVALS | DATE | FLOOR PLAN AND EQUIPMENT LIST | |
| DRAWN GSF | 07-20-06 | SIZE | REV. |
| CHECKED | | B | 2 |
| ENGR | | CAGE CODE | DWG. NO. |
| DESIGN ACTIVITY | | | 116A01-0-01 |
| REV. | | SCALE | SHEET |
| | | CUSTOM | |