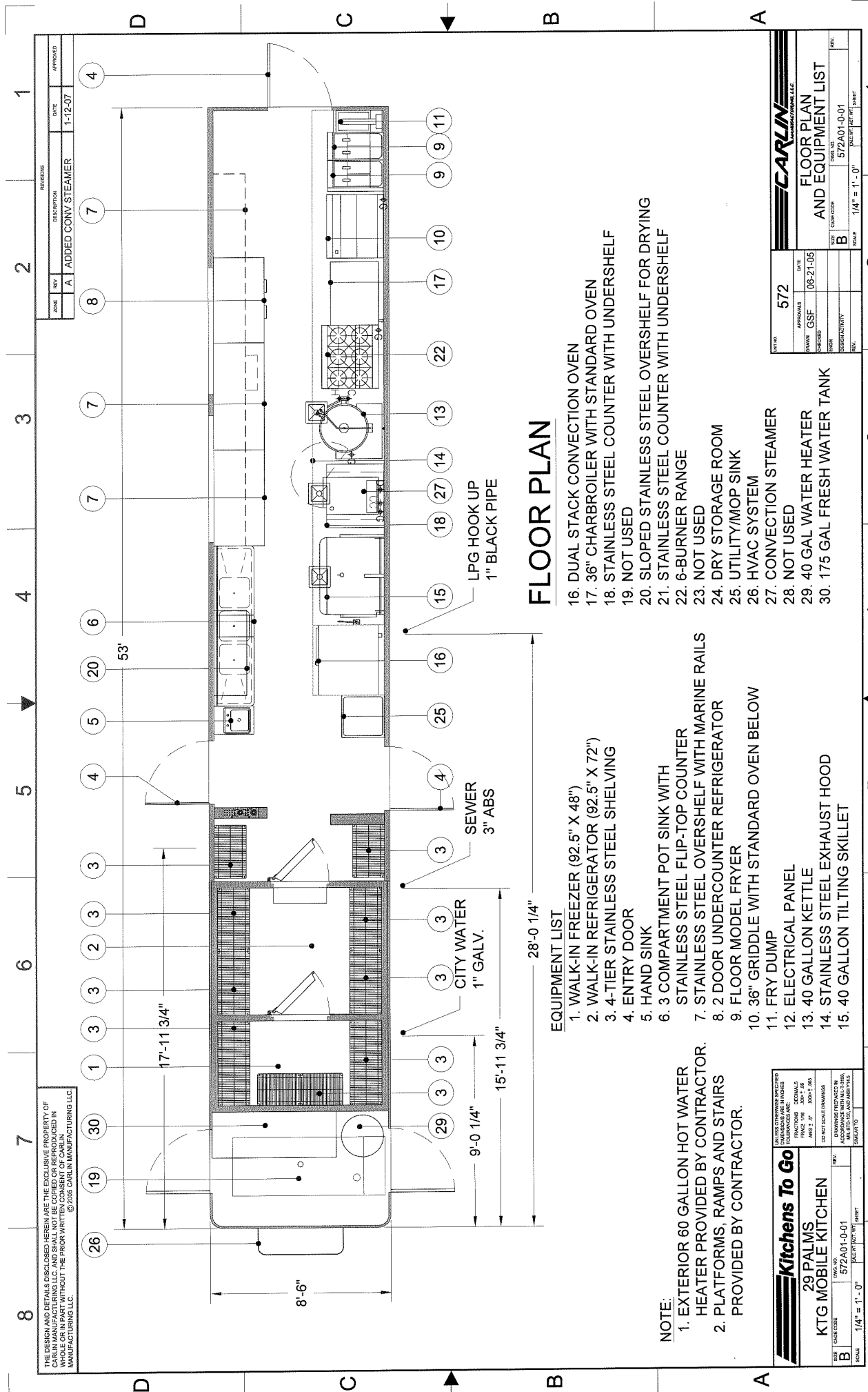


THE DESIGN AND DETAILS DISCLOSED HEREIN ARE THE EXCLUSIVE PROPERTY OF CARLINS MANUFACTURING LLC. ANY REUSE OR REPRODUCTION OF THIS DESIGN OR ANY PART THEREOF WITHOUT THE PRIOR WRITTEN CONSENT OF CARLINS MANUFACTURING LLC. © 2005 CARLINS MANUFACTURING LLC.



| ZONE | REV | DESCRIPTION | DATE | APPROVED |
|------|--------------------|-------------|---------|----------|
| A | ADDED CONV STEAMER | | 1-12-07 | |

FLOOR PLAN

- 16. DUAL STACK CONVECTION OVEN
- 17. 36" CHARBROILER WITH STANDARD OVEN
- 18. STAINLESS STEEL COUNTER WITH UNDERSHELF
- 19. NOT USED
- 20. SLOPED STAINLESS STEEL OVERSHELF FOR DRYING
- 21. STAINLESS STEEL COUNTER WITH UNDERSHELF
- 22. 6-BURNER RANGE
- 23. NOT USED
- 24. DRY STORAGE ROOM
- 25. UTILITY/MOP SINK
- 26. HVAC SYSTEM
- 27. CONVECTION STEAMER
- 28. NOT USED
- 29. 40 GAL WATER HEATER
- 30. 175 GAL FRESH WATER TANK

- #### EQUIPMENT LIST
- 1. WALK-IN FREEZER (92.5" X 48")
 - 2. WALK-IN REFRIGERATOR (92.5" X 72")
 - 3. 4-TIER STAINLESS STEEL SHELVING
 - 4. ENTRY DOOR
 - 5. HAND SINK
 - 6. 3 COMPARTMENT POT SINK WITH STAINLESS STEEL FLIP-TOP COUNTER
 - 7. STAINLESS STEEL OVERSHELF WITH MARINE RAILS
 - 8. 2 DOOR UNDERCOUNTER REFRIGERATOR
 - 9. FLOOR MODEL FRYER
 - 10. 36" GRIDDLE WITH STANDARD OVEN BELOW
 - 11. FRY DUMP
 - 12. ELECTRICAL PANEL
 - 13. 40 GALLON KETTLE
 - 14. STAINLESS STEEL EXHAUST HOOD
 - 15. 40 GALLON TILTING SKILLET

- NOTE:**
- 1. EXTERIOR 60 GALLON HOT WATER HEATER PROVIDED BY CONTRACTOR.
 - 2. PLATFORMS, RAMPS AND STAIRS PROVIDED BY CONTRACTOR.

| | | | |
|--|--|--|--|
| Kitchens To Go | | UNLESS OTHERWISE SPECIFIED, ALL DIMENSIONS SHALL BE IN INCHES AND DECIMALS THEREAFTER. | |
| 29 PALMS | | DATE: 06-21-05 | |
| KTG MOBILE KITCHEN | | DRAWN: GSF | |
| PROJECT NO: 572A01-0-01 | | CHECKED: [] | |
| SCALE: 1/4" = 1'-0" | | DESIGN ACTIVITY: B | |
| SHEET NO: 1/2 OF 2 | | DATE: 1-12-07 | |
| SHEET TITLE: FLOOR PLAN AND EQUIPMENT LIST | | APPROVED: [] | |

| | | | |
|--|--|--|--|
| Kitchens To Go | | UNLESS OTHERWISE SPECIFIED, ALL DIMENSIONS SHALL BE IN INCHES AND DECIMALS THEREAFTER. | |
| 29 PALMS | | DATE: 06-21-05 | |
| KTG MOBILE KITCHEN | | DRAWN: GSF | |
| PROJECT NO: 572A01-0-01 | | CHECKED: [] | |
| SCALE: 1/4" = 1'-0" | | DESIGN ACTIVITY: B | |
| SHEET NO: 1/2 OF 2 | | DATE: 1-12-07 | |
| SHEET TITLE: FLOOR PLAN AND EQUIPMENT LIST | | APPROVED: [] | |